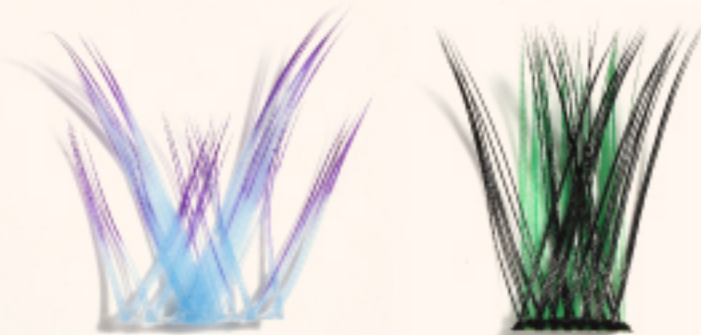




# Party-Ready Lashes

## Mixed Color False Lashes

- **Versatile for Various Occasions:**  
Ideal for stages, parties, and festivals with its vibrant yet tasteful design.
- **Perfect for Any Makeup Look:**  
Mixes colors to enhance a range of looks and settings, from casual to festive.
- **Natural and Seamless:**  
Provides a flawless, invisible look that blends effortlessly.



## Holiday Glam Lashes

Sparkle Fest Sequin False lashes /  
Multicolored individual / Mixed Color Party Lash





# Halloween Prism Burst Segment Lashes

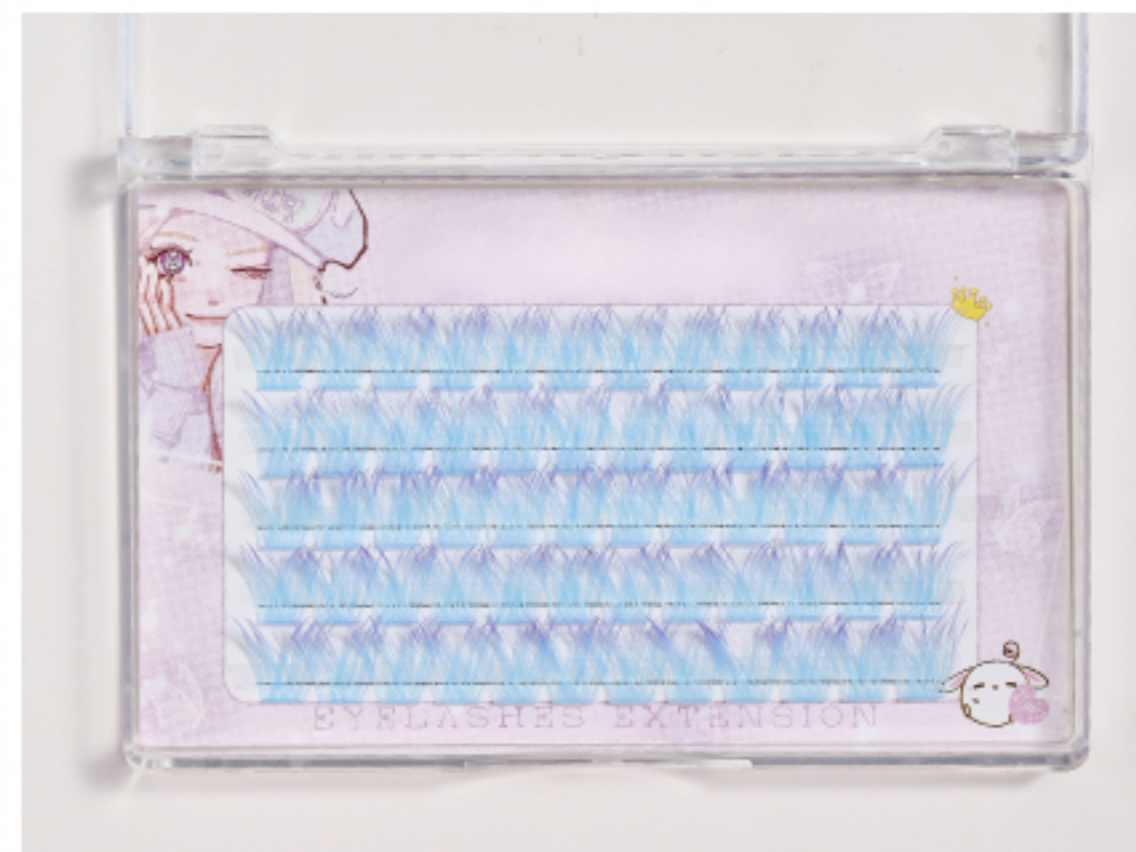
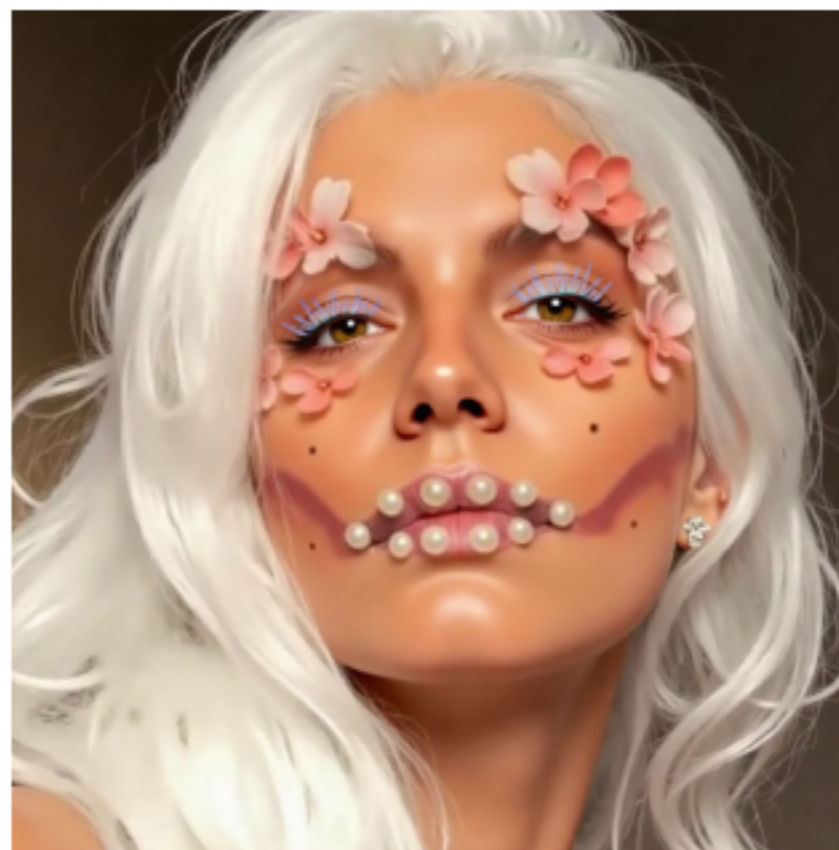
SKU.NO.: 020233001977





# Halloween Midnight Enchantress Segment Lashes

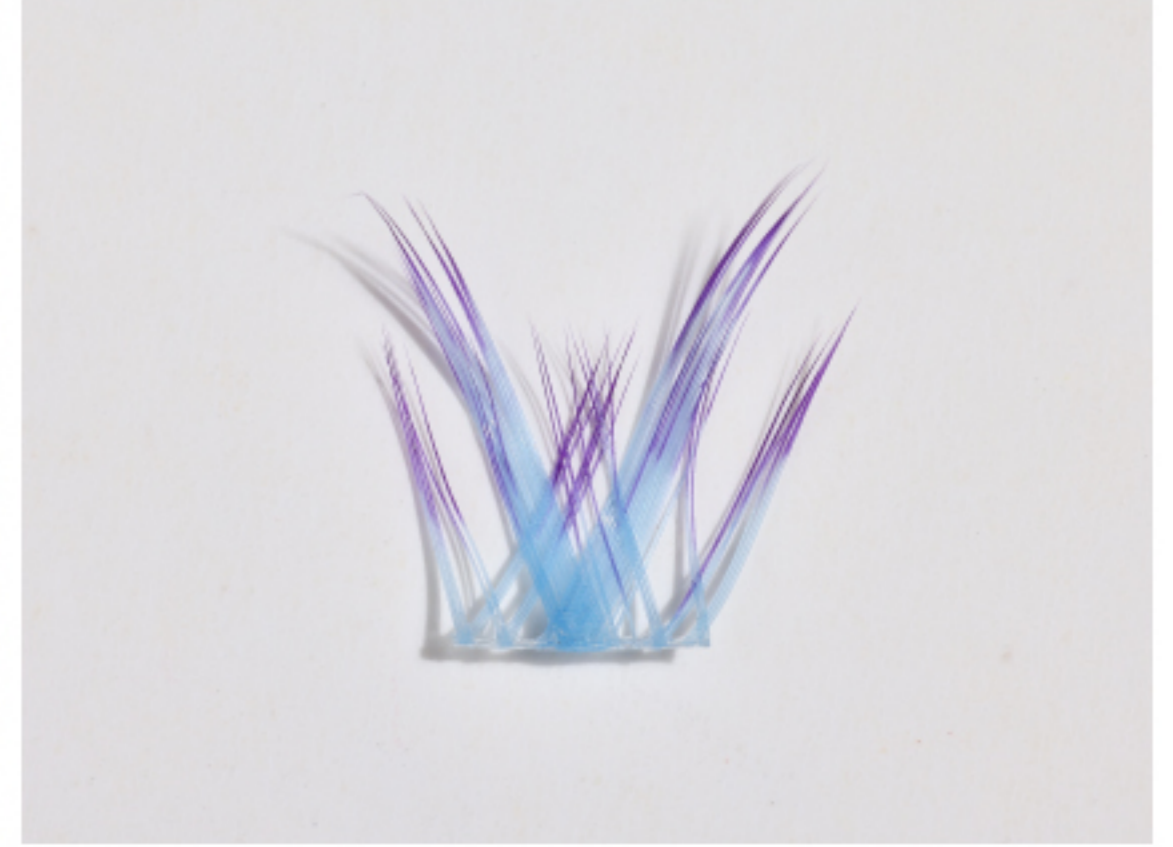
SKU.NO.: 020233001979





# Halloween Azure Plume Segment Lashes

SKU.NO.: 020233001978

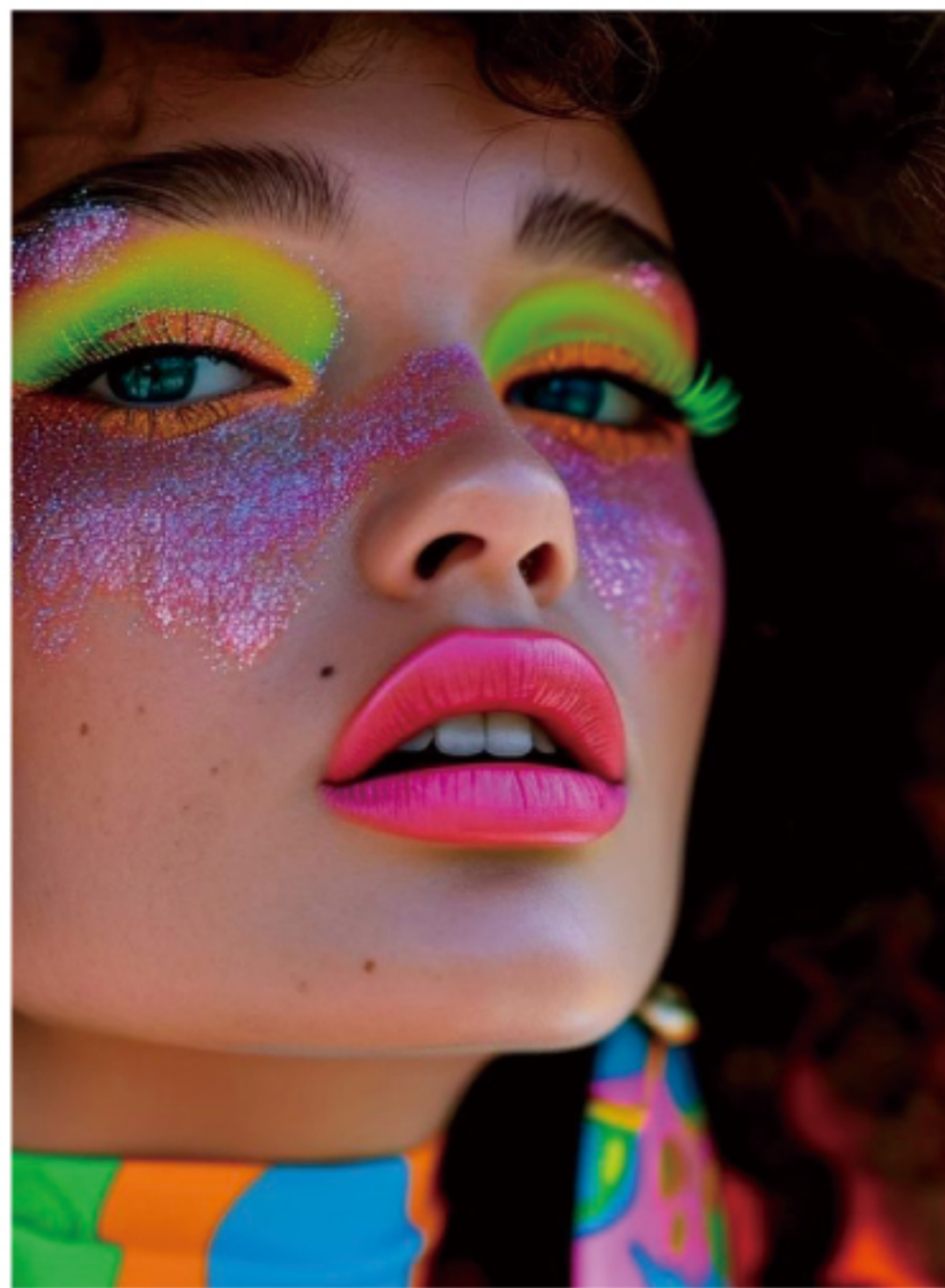




## Party Makeup Looks

WGSN

Encourage unexpected applications with creative brights





# Sparkle Fest Sequin False Lashes

SKU.NO.: 20233001935





# Sparkle Fest Sequin False Lashes

SKU.NO.: 20233001935





# New In—Multicolored Individual Flares

Creative by applying them in any pattern—above your natural lashes

**Mix natural lashes , match customized look.**

These lashes are ideal for making a statement at **music festivals, football games, parades or everyday self-expression.**



Blue & Teal Flares paired with Sheer Invisible Band Sultry



Teal & Green Flares paired with 3D Faux Mink Miami

**Perfect for all eye shapes**

Reusable up to 3 wears with proper care  
32 clusters, 14mm each



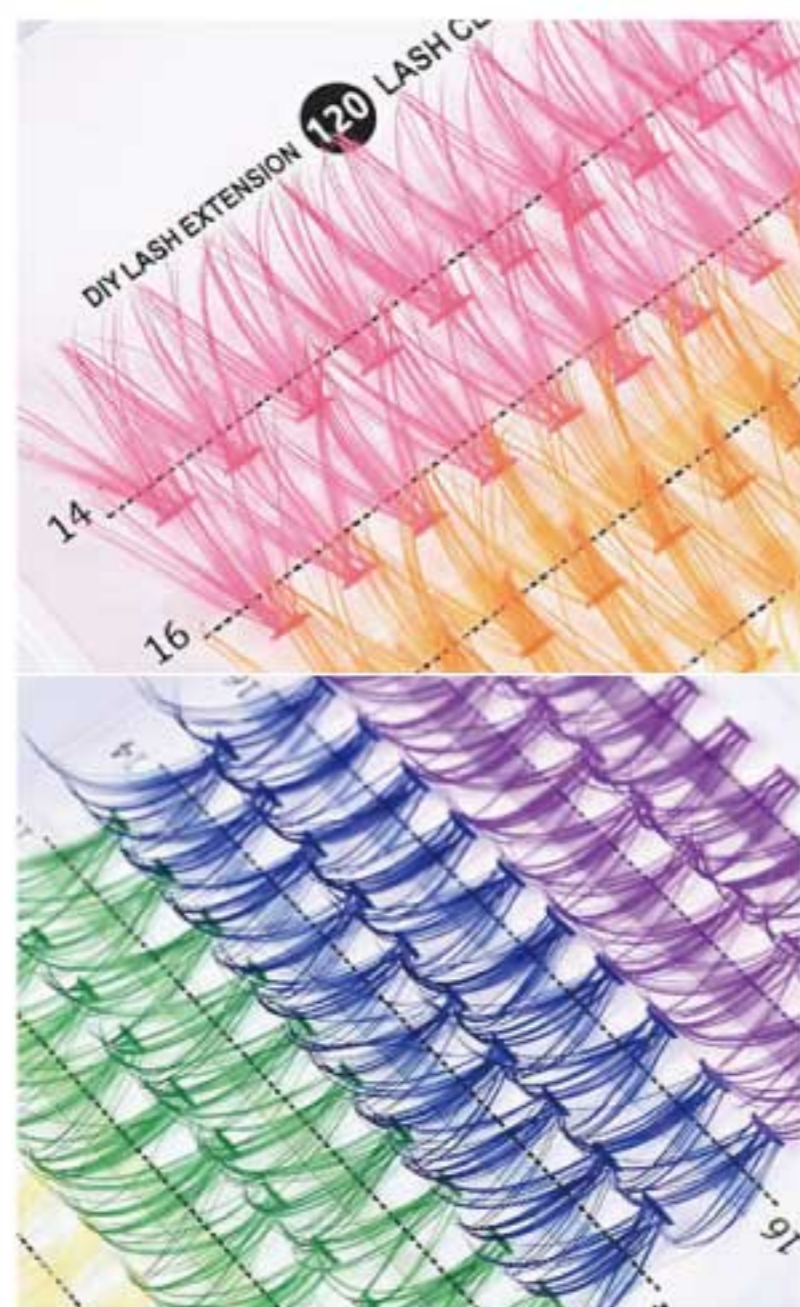
\$14

<https://www.lillylashes.com/collections/new-arrivals/>



# Multicolored Individual

Mix natural lashes , match customized look. ideal for making a statement at music festivals, football games, party,parades or everyday self-expression.



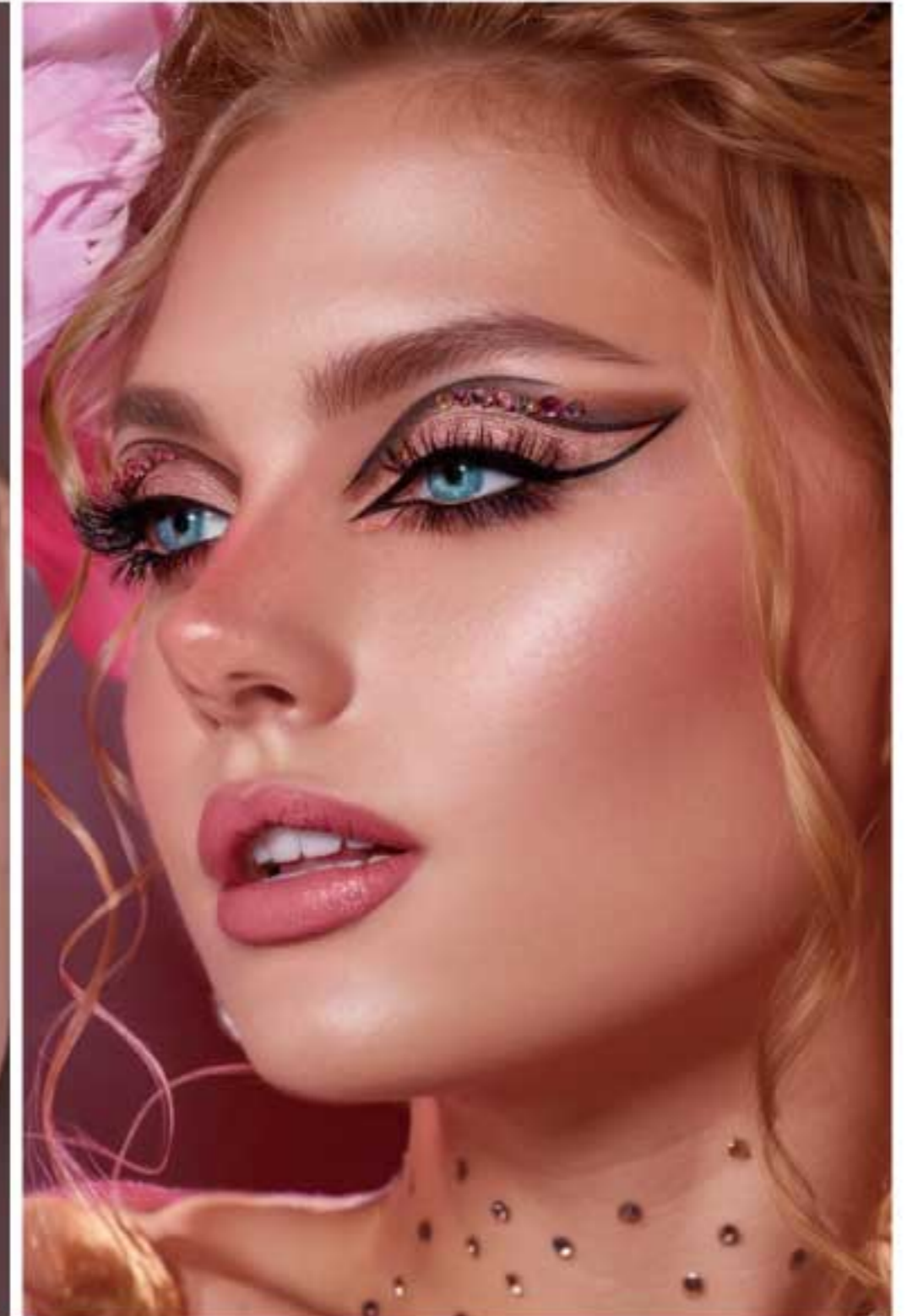


# Mixed Color Party Lash

SKU.NO.: 20233001952



Holiday  
Glam





# Mixed Color Party Lash

SKU.NO.: 20233001952





## Reintroduce the smokey brown eye

The brown smokey eye will return in full force as this season leans into warm caramel tones.

**Key words:** classic, sultry, desert, rich, caramel, mysterious

**Product applications:** eyeshadow, eyeliner, blush, bronzer, mascara

**Key finishes:** matte, satin, metallic, glitter, shimmer

**Test/invest/protect:** protect. This colour story is maturing and analysis suggests it is a core or perennial trend with established consumer buy-in and demand.





## New In—Everyday Brown Blended

- ✓ The unique blend of black and brown hairs create a natural glam
- ✓ Designed with a **60/40 blend of black and brown fibers**
- ✓ **Complement various hair colors and skin tones**, blending effortlessly with your natural lashes.



FEATURING A  
60/40 BLEND OF  
*black & brown*  
LASH FIBERS



# New In—Everyday Brown Blended





# Natural Mix Color Lash

SKU.NO.: 20233001487

Perfectly Match With All Hair And Skin Tones



Cruelty-free, safe  
comfortable & soft



Suitable for  
various occasions



The unique blend of black and  
brown lashes works well with  
all hair and skin tones.



Subtle  
Sophistication





# Natural Mix Color Lash

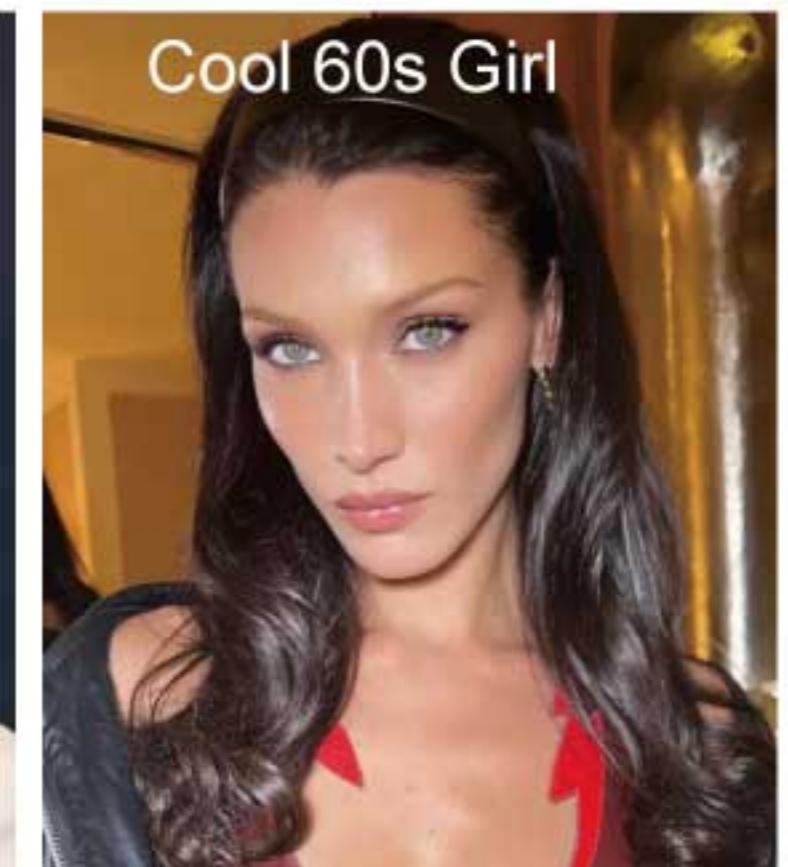
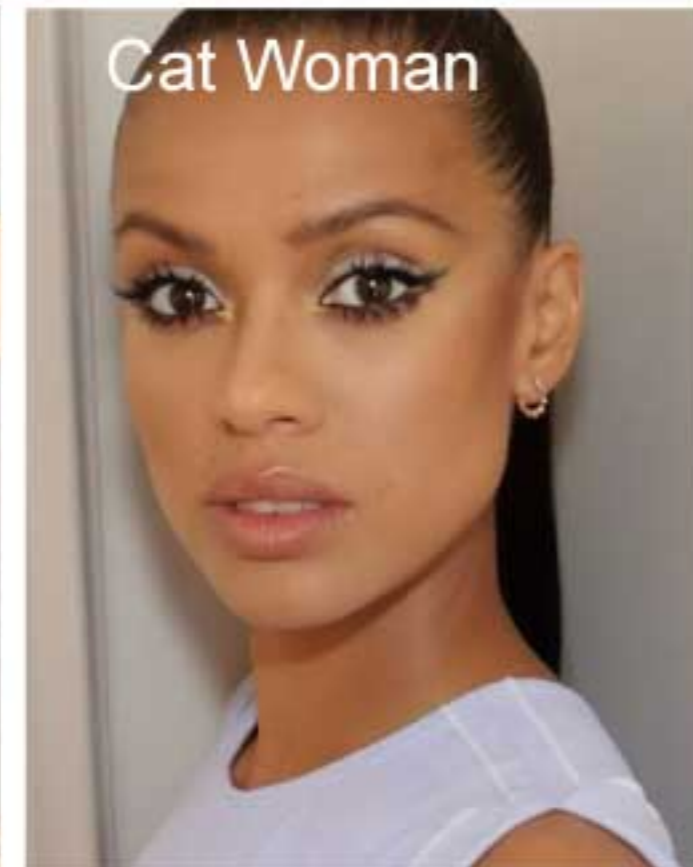
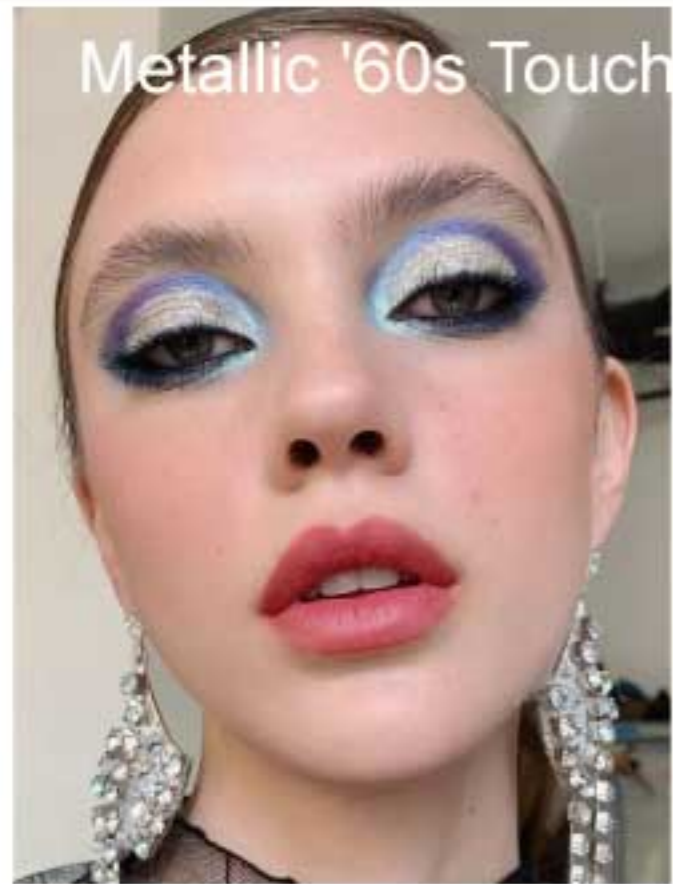
SKU.NO.: 20233001950





# 25 1960s-Inspired Makeup Looks That Have That Timeless Feel You Love

# BYRDIE



<https://www.byrdie.com/1960s-makeup-looks-8413877>



# The Best Eyeshadow for Hazel Eyes: 17 Looks You'll Want to Try ASAP

# BYRDIE



<https://www.byrdie.com/best-eyeshadow-for-hazel-eyes-8608923>