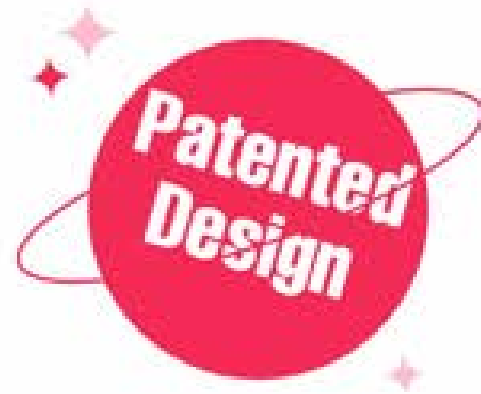


ST FUTURE
INTERNATIONAL

PATENT RESERVED PRODUCT



Beauty · Personal Care · Home Aroma
25⁺ YEARS

One Stop
Beauty Accessory Supply





About us

Founded in year 2000, St Future has been renowned to be a professional one stop beauty manufacturer and supplier. We specialise in managing OEM and ODM projects for makeup tools, nail, lash, body & hair, and home aroma products.

Global Manufacture Bases

China, Vietnam, Cambodia and USA.

We cater to clients in more than 80 countries worldwide. Our commitment to providing high-quality products and professional service has made us a trusted name in the beauty industry.

Founded in
2000

25
Years Manufacturer
and Supplier

Happy
Customers in
80+
Countries

7 Factories in
4
countries

Company Culture



VISION

Become a century-old
enterprise



MISSION

Continue to create value
for global customer



VALUES

- Customer First
- Behave With Integrity
- Take The Lead
- Be The Best
- Embrace Changes
- Enjoy Life



ATTITUDE

Work life balance



PATENT RESERVED PRODUCT

MAKEUP BRUSH

BEAUTY SPONGE

PERSONAL CARE

MIRROR

MAKEUP BRUSH



DREAMY MAKEUP BRUSH

The series is designed to elevate everyday artistry.

Patented design, 3D sample is available and new mould for mass production is required



THE FLUFFY BRUSH:

A Multi-Use Targeted Powder Brush with a pinpointed tip for precise powder application on targeted areas, and soft, fluffy bristles for overall airy coverage

SUSTAINABLE PRACTICES



Made with 100% recycled synthetic fibers



Made with a 100% ECO-friendly material (Wood / 100% Recycled Plastic)



DISTINCT LOOK

The spiral handle design of the makeup brush makes it stand out with its unique appearance, catching more attention than conventional straight handles and enhancing the product's visual appeal.



OPTION 1

BRISTLES:

Made with 100% recycled synthetic fibers

HANDLE MATERIAL:

- a. Wood
- b. 100% Recycled Plastic

OPTION 2

BRISTLES:

Made with 100% recycled synthetic fibers

FERRULES:

100% recycled aluminum ferrules

HANDLE MATERIAL:

- a. Wood
- b. 100% Recycled Plastic





OPTION 3



OPTION 4





**Diagonal section
can be customized
printing patterns**



**Existing
Moulding**

Linear Muse Brush

Stripes have always been a beautiful styling element, and the thickness, spacing, and trend of the stripes bring thousands of visual feelings. Giving the makeup brush a different experience...



Glam Skirt Brush

Inspired by the flowing elegance of a skirt, this makeup brush features a striped design that mirrors fabric pleats. Its chic shape blends beauty and functionality, adding sophistication to every application.

- 1.** Elegant Design: Skirt-inspired silhouette with delicate stripes for a stylish, modern look.
- 2.** Comfortable Grip: Flared base ensures precision and ease of use.
- 3.** Multi-Purpose: Perfect for blending, contouring, and highlighting, suited for all skill levels.
- 4.** Gift-Worthy: A practical yet stunning accessory for beauty lovers.













● 1020000174
● 1020000173



1020000157



1020000175

BEAUTY SPONGE



Makeup Saver

Less makeup absorption
Cosmetic Applicator



Flexi Silicon Sponge

SKU.NO: 202210642

Material: PU+silicone

Size: 40*60mm



01

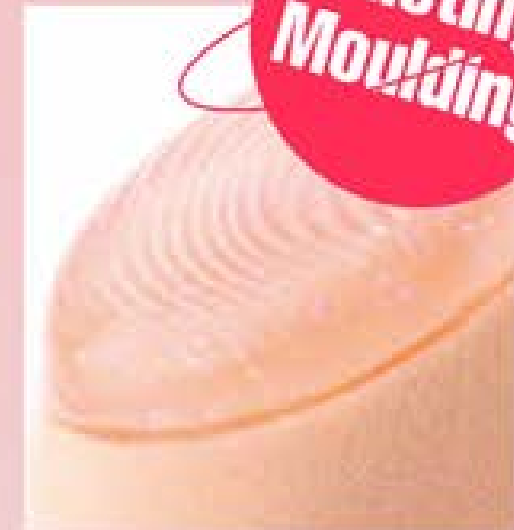
- **Silicone Water Proof**
Reducing foundation waste
Apply foundation

02

- **Round Sides**
Concealing, blending
and sculpting

03

- **Precision Tip**
Conceal + perfect
hard-to-reach areas
or blemishes



Makeup Saver

Less makeup absorption
Cosmetic Applicator

SKU.NO: 0202231308

Material: Silicone+PU+Flocking

Size: 40*60mm



01

Silicone **Water Proof**
for wet product

**Reducing
foundation
waste**

Apply +cover



02

Existing Moulding
Slanted **Soft**
for wet product
Detailing

Conceal + perfect



03

Flocking **Fluff**
for dry product
Setting

Blend + blur

Makeup Saver

Less makeup absorption
Cosmetic Applicator



01

Flat Edge

No Waste: TPU ensures even application

Apply liquids or creams

02

Rounded Side

Bounce +blend product

03

PRECISION TIP

Conceal + perfect hard-to-reach areas or blemishes



Multi Edge Makeup Sponge

SKU.NO: 202210634

Material: TPU+PU

Size: 60*40mm

Makeup Saver

Less makeup absorption
Cosmetic Applicator



01

Blending Puff

Elasticity and skin-friendly composition. Ideal for liquid or cream formulas, ensuring a flawless base makeup.

02

Setting Puff

Enhanced powder adherence. Perfect for loose powder, guaranteeing a flawless finish every time.



03

Skin Awakening Pad

The gel takes out, ideal for hot and cold therapy packs for skin relaxation.

The gel inserts provide a luxurious bounce for the final application.

INNOVATIVE DESIGN SPONGE

One Stop Beauty Accessory Supply



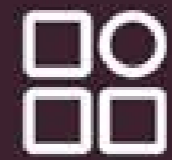
Innovative Design



Patented Technology



Gentle on Skin



Versatile Use



Wet & Dry Dual Use

Applicators



Freckles Look ^{patented}

Cosmetic Applicator

Create a freckles look in 2 steps



01 Freckles Dotting

The innovative silicone felt tip allows you to create freckles easily and with irregular shapes to make them look hyper-realistic.

02 Blending Sponge

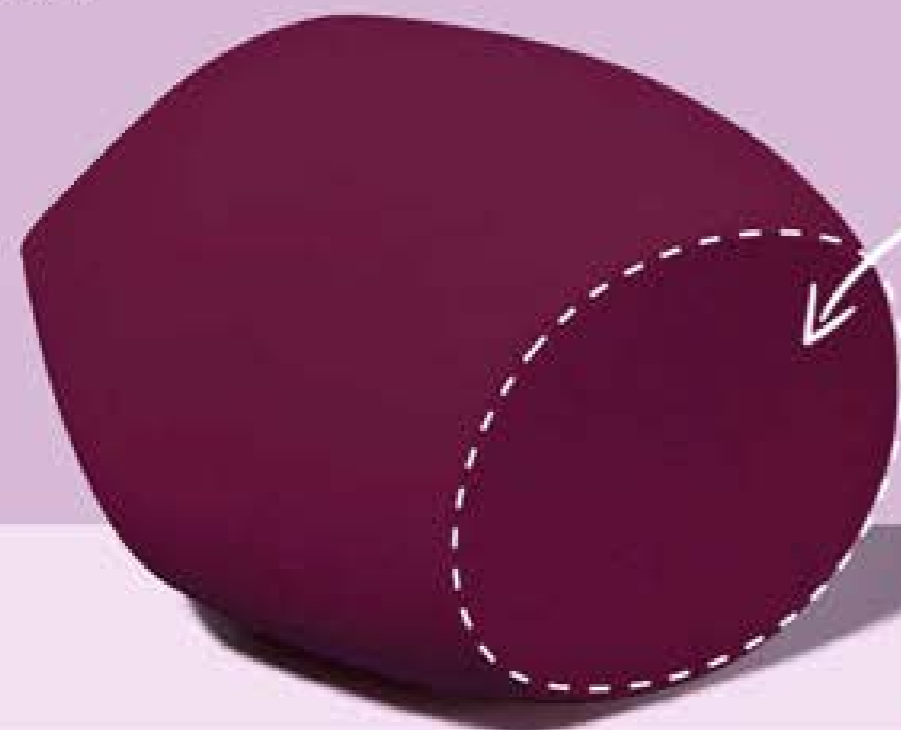
A flawless blended makeup look with no streaks, radiating a natural glow.



Helix Edge Makeup Sponge

Existing Moulding

Sku.No: 202210622
Size: 40*60mm
Material: PU



01

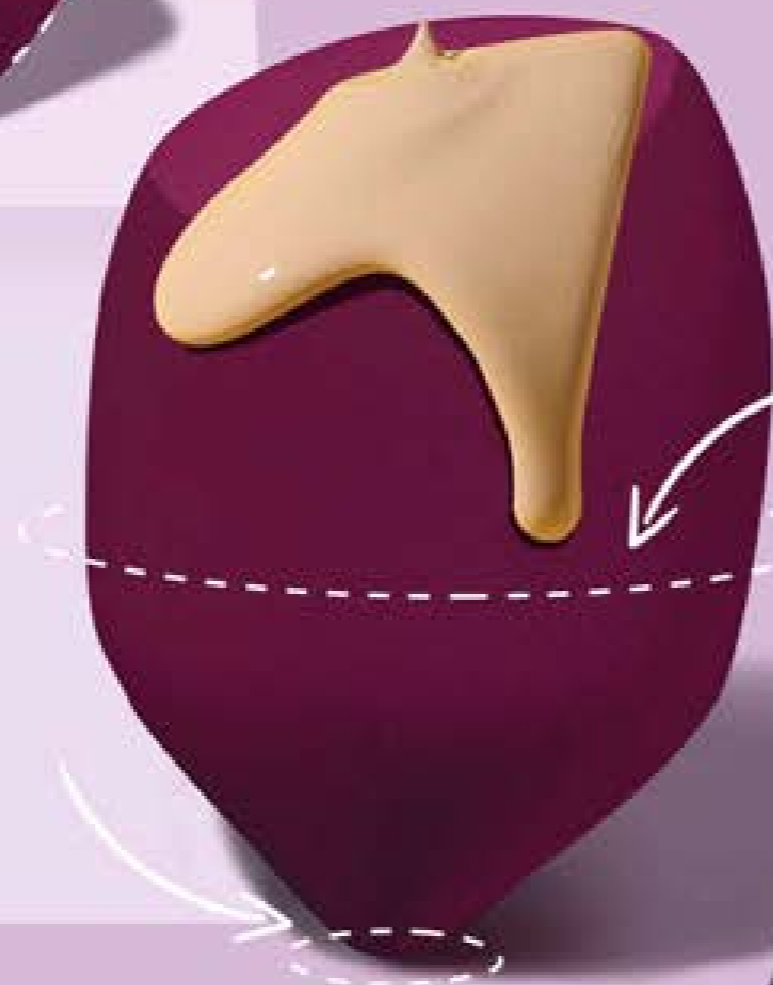
Flat Edge

Perfect for larger areas of the face such as forehead or cheeks.

02

Pointed tip

Perfect for smaller areas such as under the eyes, around the nose and lips.



03

Round Side

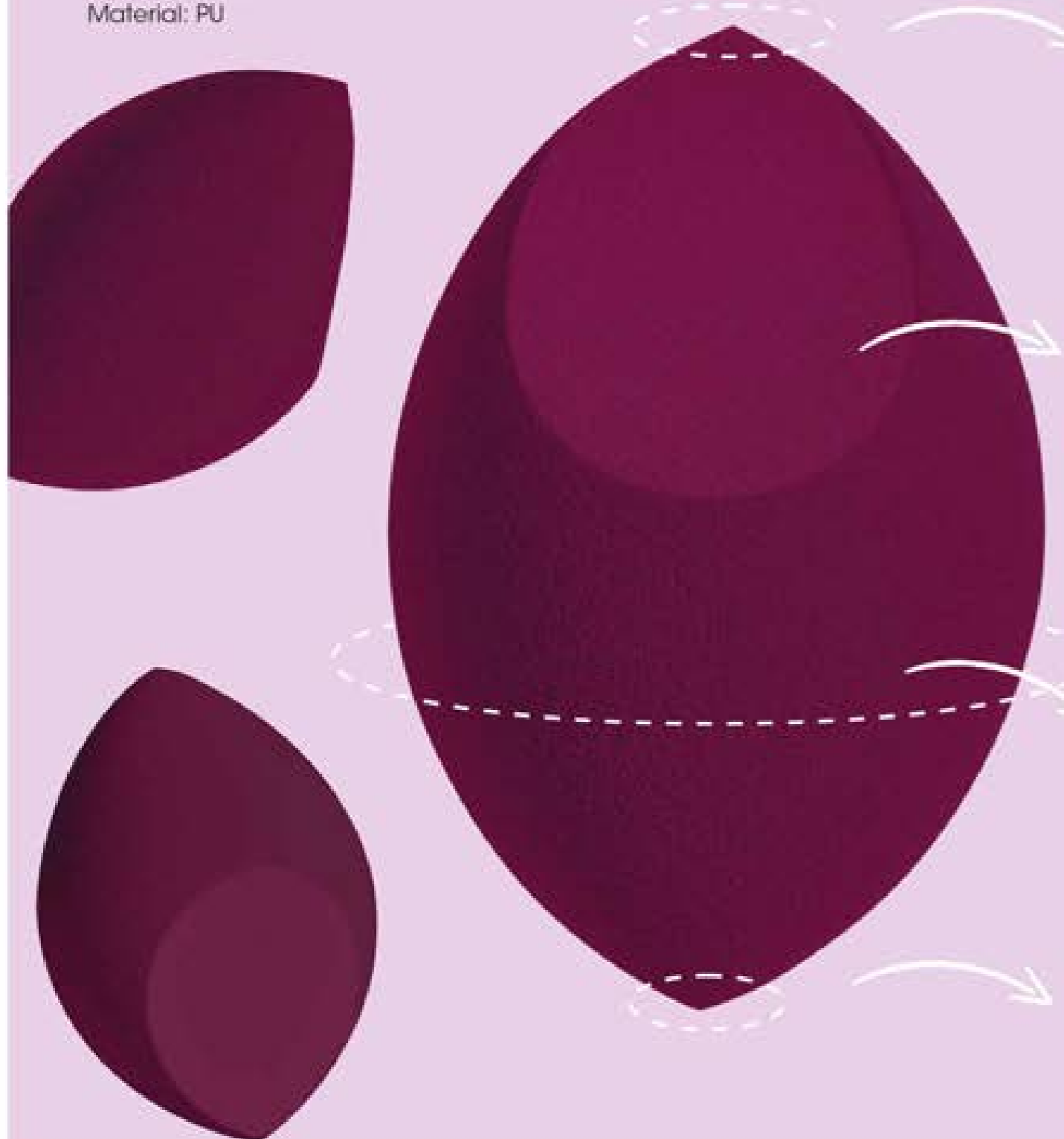
Use to apply makeup on face and neck.



Olive Cut Beauty Sponge

Existing Moulding

Sku.No: 202210624
Size: 40*60mm
Material: PU



01

Pointed tip -1

Perfect for smaller areas such as under the eyes, around the nose and lips.

02

Flat Edge

Perfect for larger areas of the face such as forehead or cheeks.

03

Round Side

Bounce and blend for seamless, all-over coverage.

04

Pointed tip-2

Spot-conceal blemishes for precise coverage



Tri Edge Beauty Sponge

Existing Moulding

Sku.No: 202210619
Size: 50*50*20mm
Material: PU

01 Flat Edge

Ideal for blurring and softening the lower lash line and brow bone for a seamless finish.

02 Small Edge

Perfect for precise contouring around the eyes, nose, and cheekbones, enhancing and defining facial features with ease.

03 Arc surface

Blend makeup for a finished look

04 Large Edge

Apply foundation to the face with abouncing motion



Revolve Makeup Sponge



Sku.No: 202210623
Size: 40*60mm
Material: PU



01 Pointed Tip

Conceal + perfect hard-to-reach areas or blemishes

02 Arc Surface

Blend makeup for a finished look

03 Flat Edge

Perfect for larger areas of the face such as forehead or cheeks.

04 Unique Shape

Multi-purpose foam works with all liquids, creams + powders



Tri Sculpt Irregular Sponge



Sku.No: 202210620
Size: 62*45*30mm
Material: PU



01

Pointed Tip

Perfect for smaller areas such as under the eyes, around the nose and lips.



03

Small Edge

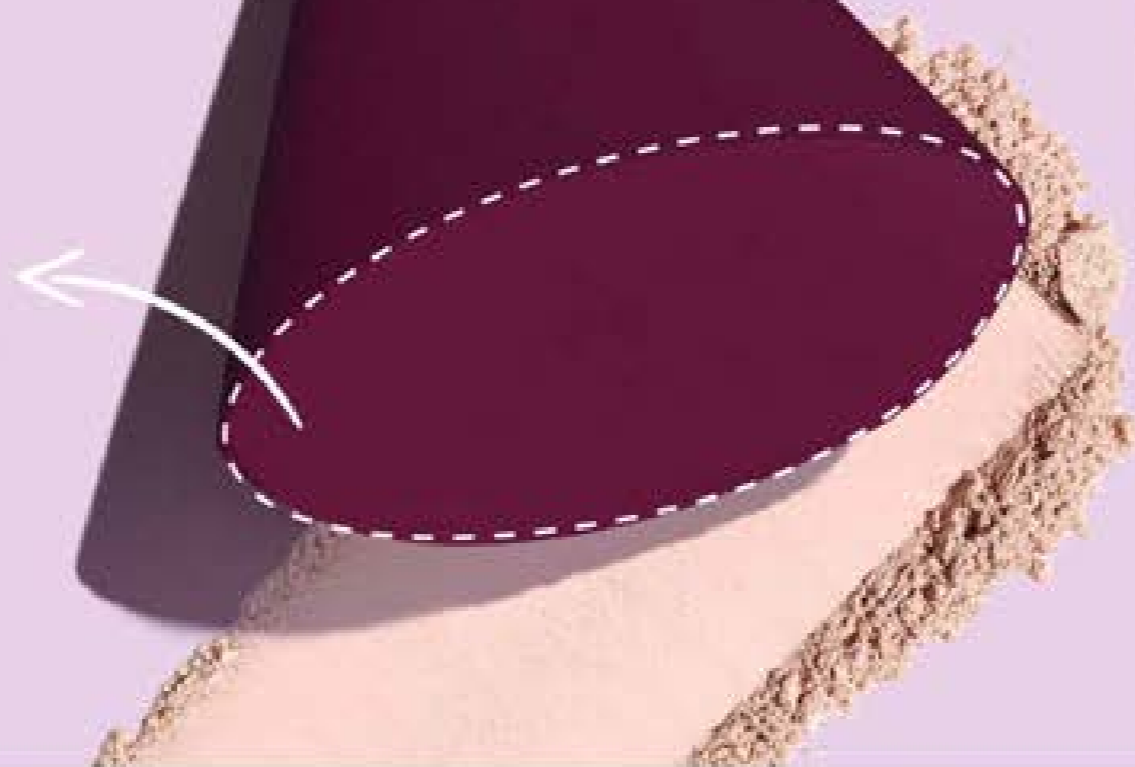
Perfect for precise contouring around the eyes, nose, and cheekbones, enhancing and defining facial features with ease.



02

Flat Edge

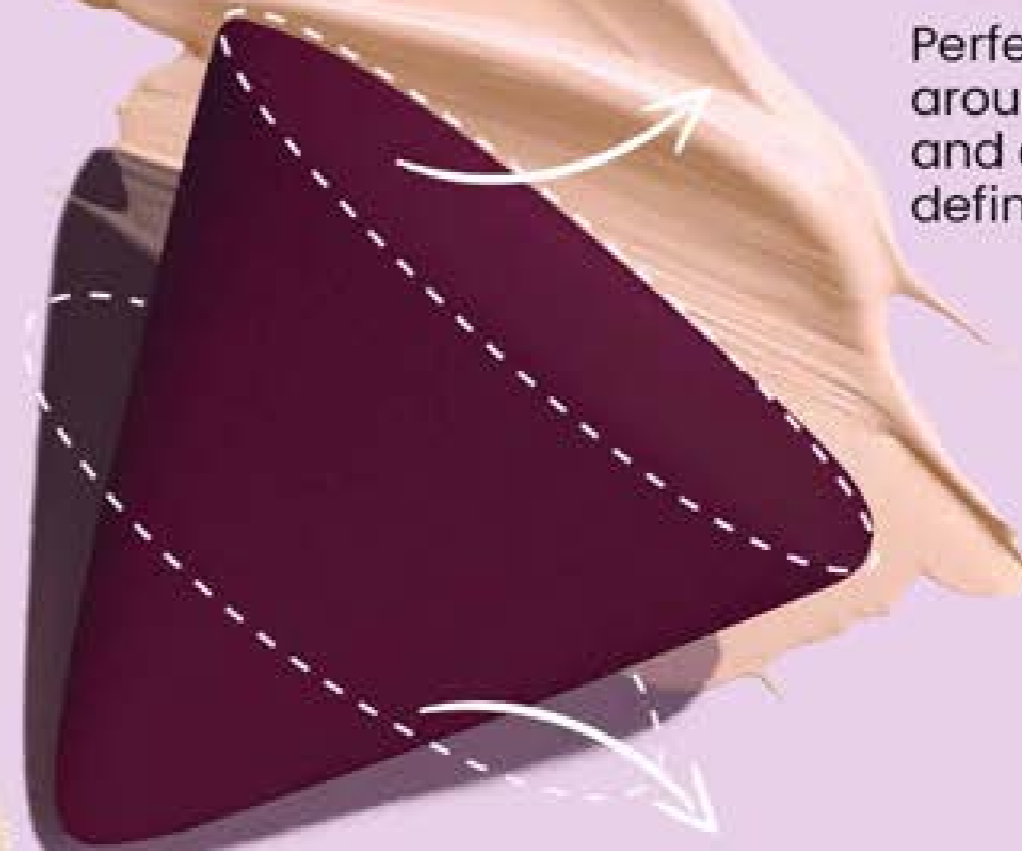
Perfect for larger areas of the facesuch as forehead or cheeks.



04

Arc Surface

Blend makeup for a finished look



Gyro Shape Beauty Sponge



Sku.No: 202210624
Size: 40*60mm
Material: PU

01

All-in-One Versatility

Ideal for blending foundations, creams, and liquids with professional-level precision.

02

Fast & Flawless

Effortlessly achieve a smooth, streak-free finish in seconds.

03

Wet or Dry Perfection

Designed for dual functionality, delivering consistent results in both wet and dry applications.



Sharp Edge Beauty Sponge

Existing Moulding



Sku.No: 202210621
Size: 40*60mm
Material: PU

01 Round Side

Bounce and blend for seamless, all-over coverage.



02 Flat Edge

Perfect for larger areas of the face such as forehead or cheeks.

03 Easy Application

works with all liquid, cream, + powder formulations

Iron Sculpt Sponge

Existing Moulding

Sku.No: 202210618
Size: 45*40*18mm
Material: PU



01

Base

Blend liquid +
cream makeup



02

Define

Contour +
blend out blush



03

Under Eyes

Set makeup



Creative Curve Sponge



Sku.No: 202210640
Size: 40*60mm
Material: PU



01

Pointed Tip

Perfect for smaller areas such as under the eyes, around the nose and lips.

02

Arc Surface

Blend makeup for a finished look

03

Flat Edge

Perfect for larger areas of the facesuch as forehead or cheeks.

Creative Curve Sponge



More options:



01
Precision Tip

Ideal for concealing and detailing around the eyes and nose.

02
Curved Edge

For detailing around the eyes, nose, and T-zone.

03
Flat Base

Used for tapping foundation on larger areas of the face.

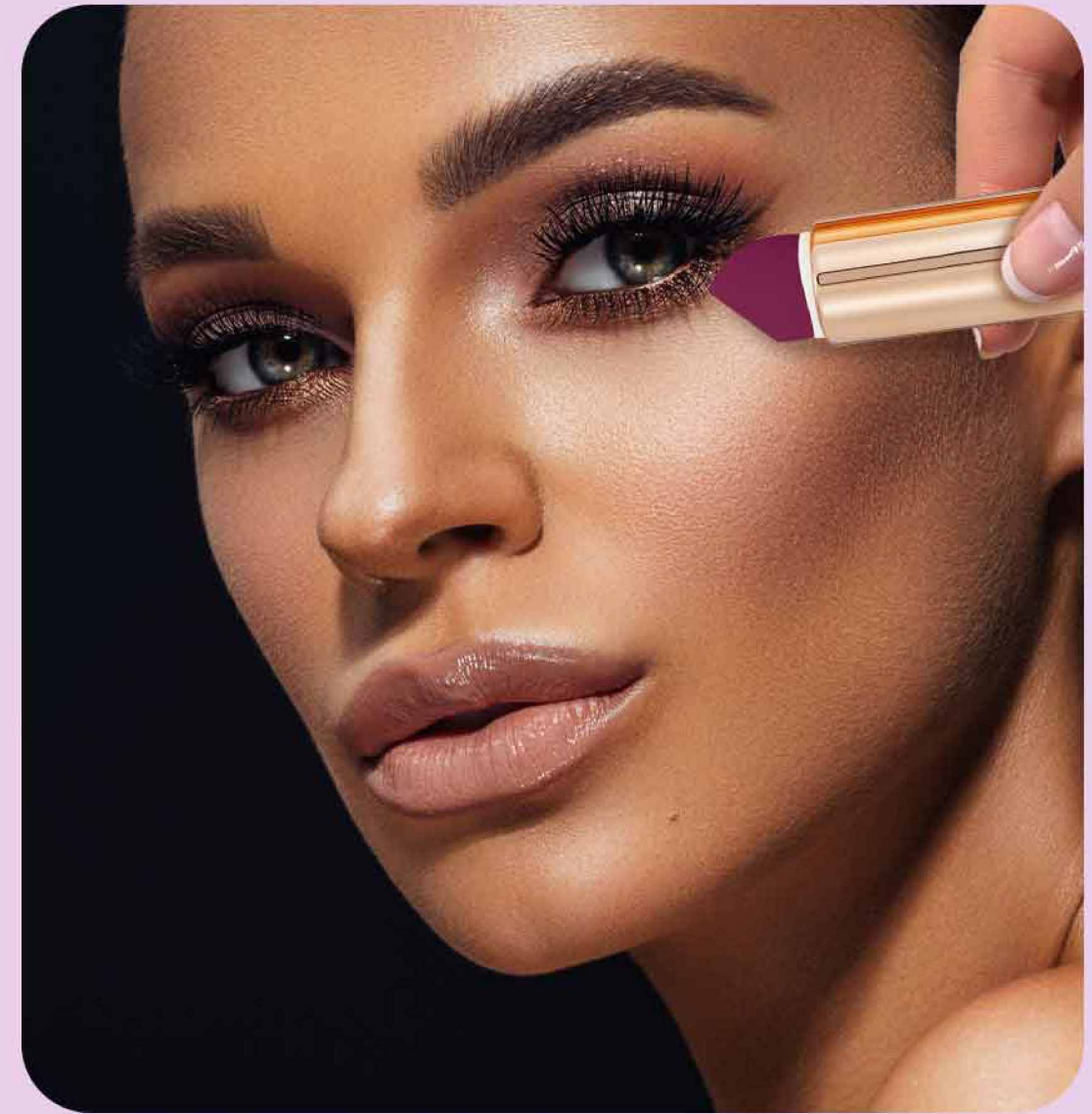
Applicators

Existing Moulding

I'm Not Lipstick

Cosmetic Applicator

Perfect for on-the-go touch-ups



patented



01
Sponge Applicator

Tip pointed precision blending on

02
Compact Mirror

Touch up your look

COSMETICS APPLICATOR

"I AM NOT LIPSTICK"



Design Registered

Multi-Purposes

- Great for applying lip gloss
- Great for applying creamy concealer & other cosmetics
- Precision application
- On spots, lips, under eyes and in the smile line
- Unique roll-up compact design with mirror.



MU50001 Size: 70X22 MM



Packing option

COSMETICS APPLICATOR

"I AM NOT LIPSTICK"



Design Registered

- Multi-Purposes**
- Great for applying lip gloss
 - Great for applying creamy concealer & other cosmetics
 - Precision application
 - On spots, lips, under eyes and in the smile line
 - Unique roll-up compact design with mirror.



Existing Moulding



MUS0002 Size: 78X22 MM



Packing option

PATENT PENDING-OWN DESIGN OWN MOULD. COSMETICS APPLICATOR



Existing
Moulding

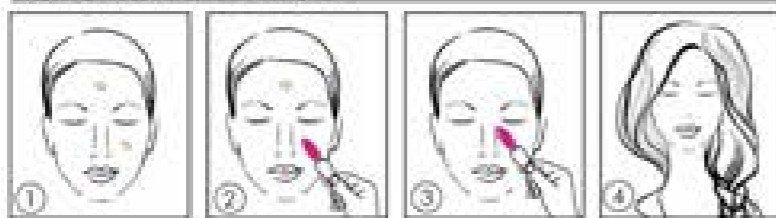
ROLLER COSMETICS APPLICATOR

Design Registered



- Improved rolling model to apply fluid foundation on face
- Pointed tip to cover spots, under eyes or in the smile line
- Ergonomic designed handle with easy grip
- Interchangeable sponge head

HOW TO CONTOUR AND HIGHLIGHT FACE:
FOLLOW STEP-BY-STEP.



MUS0003 Size:25X115 MM

Packing option

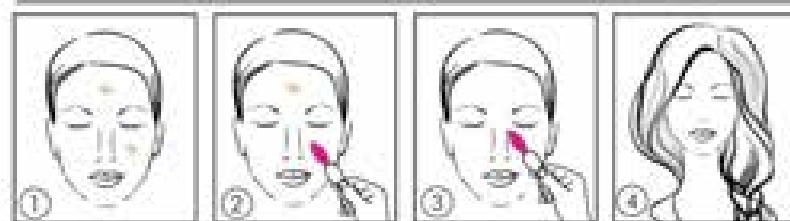
ROLLER COSMETICS APPLICATOR

Design Registered



- Improved rolling model to apply fluid foundation on face
- Pointed tip to cover spots, under eyes or in the smile line
- Ergonomic designed handle with easy grip
- Interchangeable sponge head

HOW TO CONTOUR AND HIGHLIGHT FACE:
FOLLOW STEP-BY-STEP.



MUS0004 Size: 25X115 MM

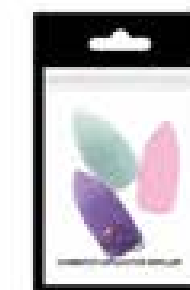
Existing Moulding



Packing option



REFILL PACK:
MUS0005
Size: 25X35 MM



FINGER COSMETIC APPLICATOR

Design Registered

Existing Moulding



MUS0007 Size: 18X41MM



MUS0220 Size: 18X41MM

This is the make up sponge that fits on your finger! It helps you apply make up flawlessly and quickly.

- Hypoallergenic
- Washable
- Reusable



MUS0250 Size: 45MM

MUS0254 Size: 20X40MM



PACKING OPTION

PERSONAL CARE

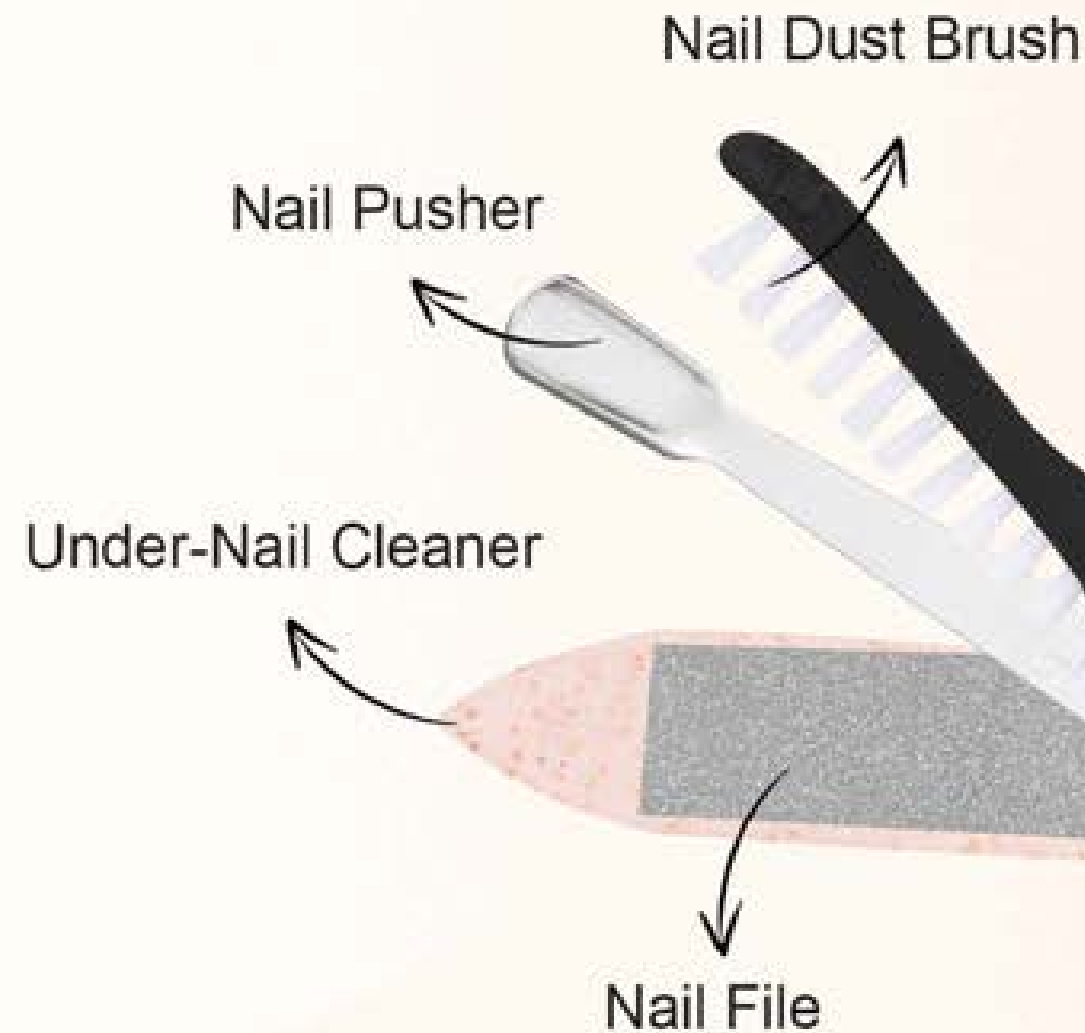
Patented design, 3D sample is available and new mould for mass production is required



All-in-One Functionality

SKU.NO.: 101270486 / SIZE: 8.1*1.4*2.4cm

- ♥ **All-in-One Tool** – Trim, file, and clean nails effortlessly.
- ♥ **Foldable Design** – Compact, lightweight, and travel-friendly.
- ♥ **Rust-Proof Steel** – Durable, corrosion-resistant carbon steel.
- ♥ **Eco-friendly Handle** – Sustainable, stylish, and practical.
- ♥ **Precision Cuts** – Sharp, smooth, and easy to use.



Multifunctional

ON
THE
GO



Ours

- ✔ Easily cuts hard/thicker nails: such as those of elderly individuals or those with harder nails, as well as toenails.
- ✔ Wider Applicability
- ✔ Effortless Use
- ✔ Versatility

VS

Others



- ✘ Fixed Jaws
- ✘ Small Jaw
- ✘ Conventional Handle

Breeze Buffer Fan Nail File

SKU.NO.: 0101270481 / SIZE: 9.2*2cm



Multifunctional



Eco-friendly

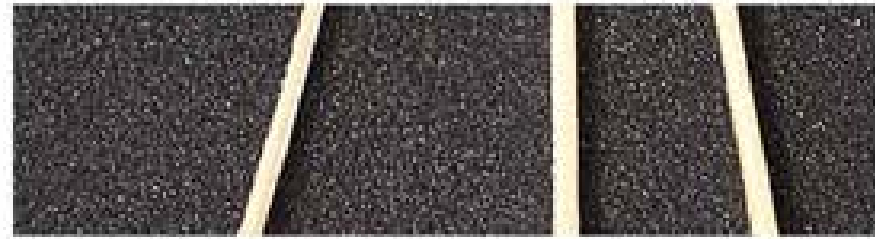


✔ **Eco-Friendly Bamboo:**
Made from sustainable bamboo materials.

✔ **Dual-Sided Sandpaper:**
One side for filing, the other for polishing.
Foldable design for easy storage and portability.

Wearables

Keychain-style packaging adds playfulness and customization, appealing to APAC and Gen Alpha's desire for joy, novelty, and status in beauty.



Pristine Touch Nail Brush

SKU.NO.: 0101270482 / SIZE: 10*2cm



5 in 1

Multifunctional



Eco-friendly



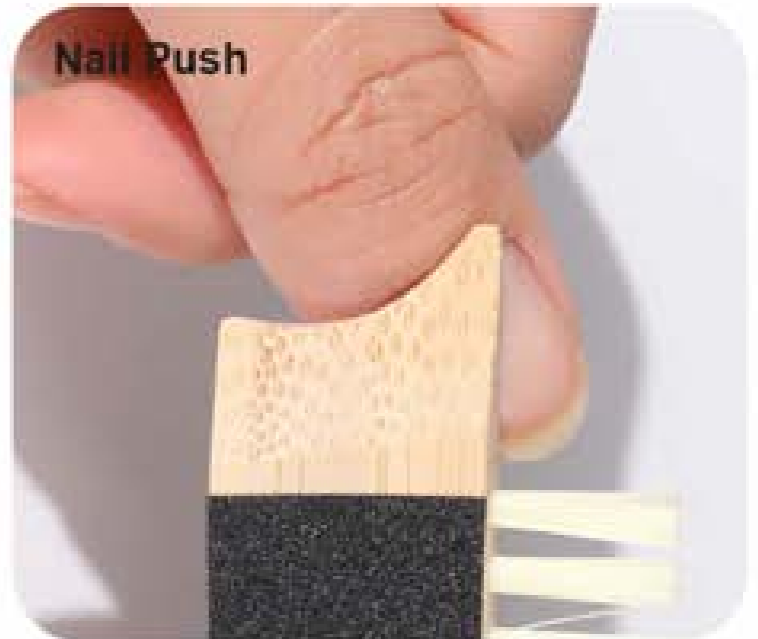
Dual-Purpose Sandpaper:

One side for filing, the other for polishing, with a brush to clean nail surfaces.



Precision Tip:

Perfect for detailing and refining nail edges



Curved Bamboo Surface:

Perfect for pushing back cuticles.

Multiple foot care tool

SKU.NO.: 0101270483 / SIZE: 24*7.5cm



Multifunctional



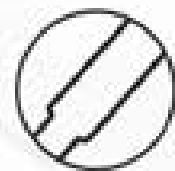
Integrated Bristle Design:

Bottom bristles sweep away dead skin and cuticles, conveniently stored within the base.



Effective Exfoliation:

Black sand surface efficiently removes foot calluses and dead skin.



Ergonomic Long Handle:

Designed for comfortable and easy use.



Eco-Friendly Bamboo:

Made from sustainable materials for an environmentally conscious choice.



A:Removes dead skin by sand paper surface



B:Removes foot calluses by metal surface



PLAYFUL PET

MANICURE & PEDICURE TOOLS

Patent Pending

Meow & Charming Panda



PLAYFUL DESIGN



DESIGNED TO LAST



ECO-FRIENDLY MATERIALS

REPLACEABLE SANDPAPER DESIGN



Multifunction, Offers different sandpaper options for various needs!



Whether it's for shaping or polishing.



Get all your nail care done in one go, effortlessly!



Sandpaper

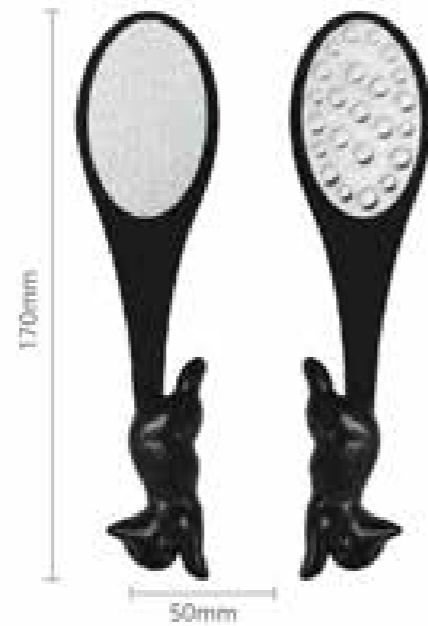


Replaceable



ONE STOP BEAUTY ACCESSORY SUPPLY

PEDICURE



MIRROR

Patented design, 3D sample is available and new mould for mass production is required



MIRROR

PATENTED DESIGN



CM30214 Size: 70X80X10MM



CM30216 Size: 70X80X10MM



CM30215 Size: 70X80X10MM



CM30251 Size: 70X80X10MM



CM30201 Size: 70X80X10MM



CM30195 Size: 70X80X10MM



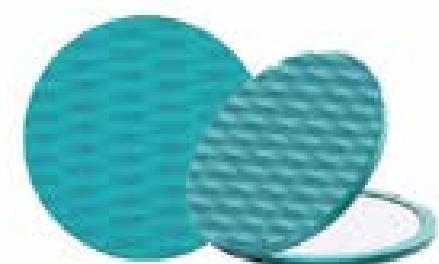
CM30198 Size: 70X80X10MM



CM30202 Size: 70X80X10MM



CM30219 Size: 70X70X10MM



CM30217 Size: 70X70X10MM



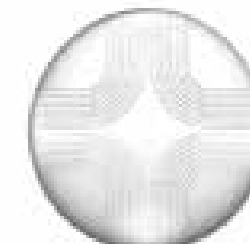
CM30222 Size: 70X70X10MM



CM30249 Size: 70X80X10MM



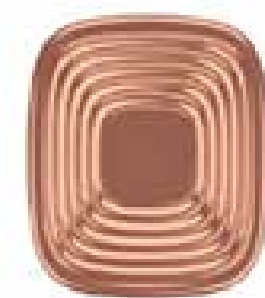
CM30252 Size: 70X70X10MM



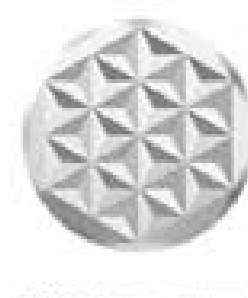
CM30253 Size: 70X70X10MM



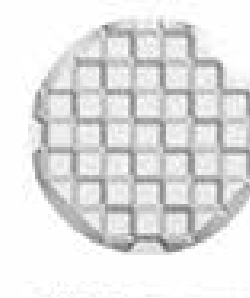
CM30254 Size: 70X70X10MM



CM30199 Size: 70X70X10MM



CM30218 Size: 70X70X10MM



CM30221 Size: 70X70X10MM



CM30220 Size: 70X70X10MM

Factory Accreditation



Factory Accreditation :

BSCI / FAMA / GMPC / ISO22716 / ISO14001 / ISO9001 / SEDEX / GRS

International Clients

Boots

Walgreens

NEXT

Superdrug[★]

PRIMARK[®]

savers
HEALTHHOME BEAUTY

Marionnaud

ICI PARIS XL

RÖSSMANN

Kruidvat

trekpleister

Watsons

Sally Hansen

REAL *by Sam & Mic*
TECHNIQUES[®]

ecOTOOLS[®]

CALA[®]

COTY

NatureWell

ELEGANT
TOUCH

eylure

salonsystem 

SKINNY DIP
LONDON

RIB
ROYAL BEAUTY

PARSA
— BEAUTY —

ST FUTURE
INTERNATIONAL

THANK YOU !

Together, we make the future brighter !

www.st-future.com



St Future International Ltd

Room 8, 9/F, Chevalier Commercial Centre,
No.8 Wang Hai Road, Kowloon Bay, Hong Kong
Tel: +852 2318 0170

Guangzhou Office

4th Floor, 1823 Business Park, No. 29 Yuan Xia Tian 3rd Road,
BaiYun District, Guangzhou, China
Tel: +86 20 6661 6688

UK Office

34 Delisle Road, London SE28 0JE UK
Tel: +44 20 8317 0588

USA Office

676 N Spring St, Los Angeles California 90012
Tel: +1 949 299 6629