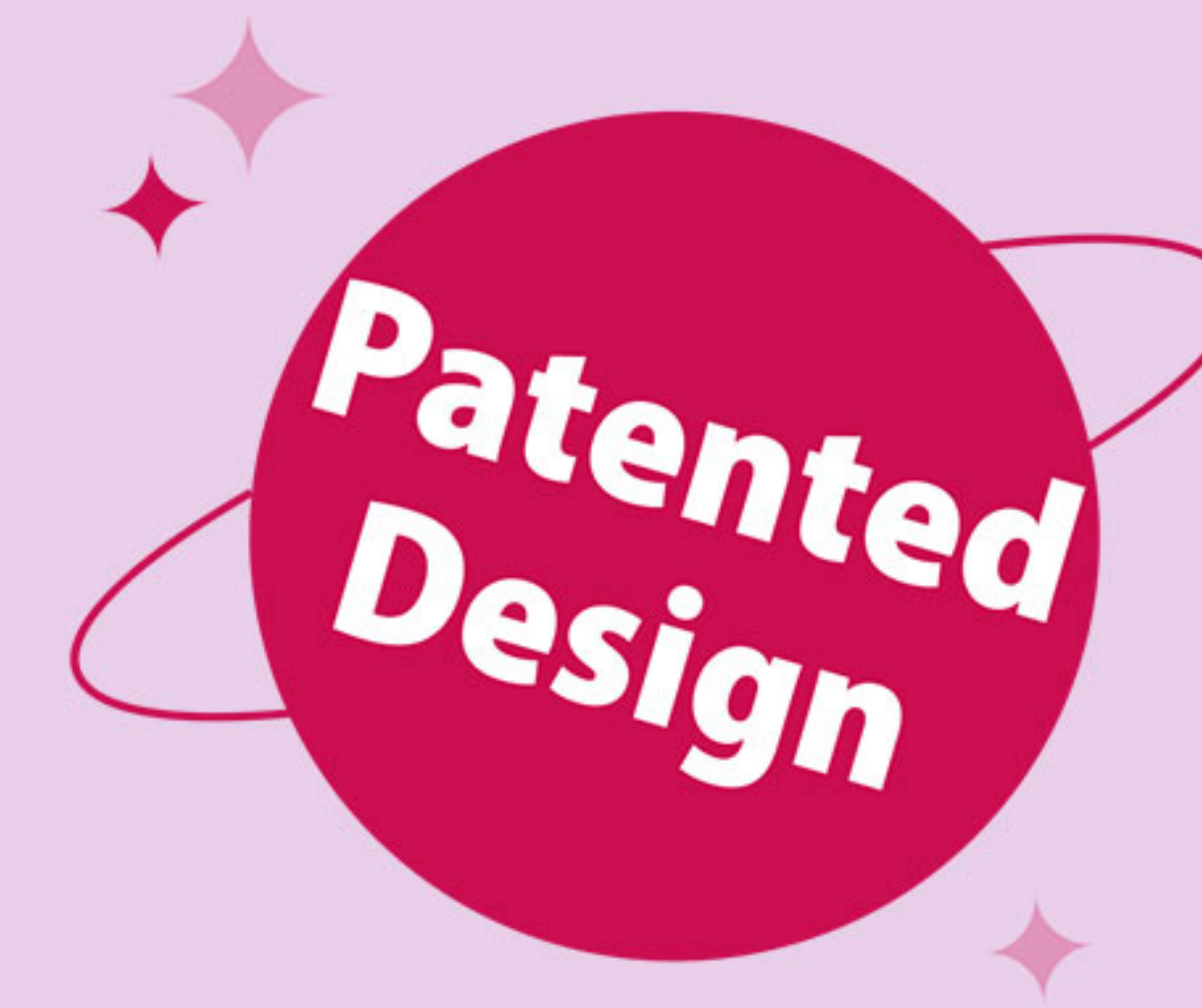


INNOVATIVE DESIGN SPONGE

One Stop Beauty Accessory Supply



Innovative Design



Patented Technology



Gentle on Skin



Versatile Use



Wet & Dry Dual Use

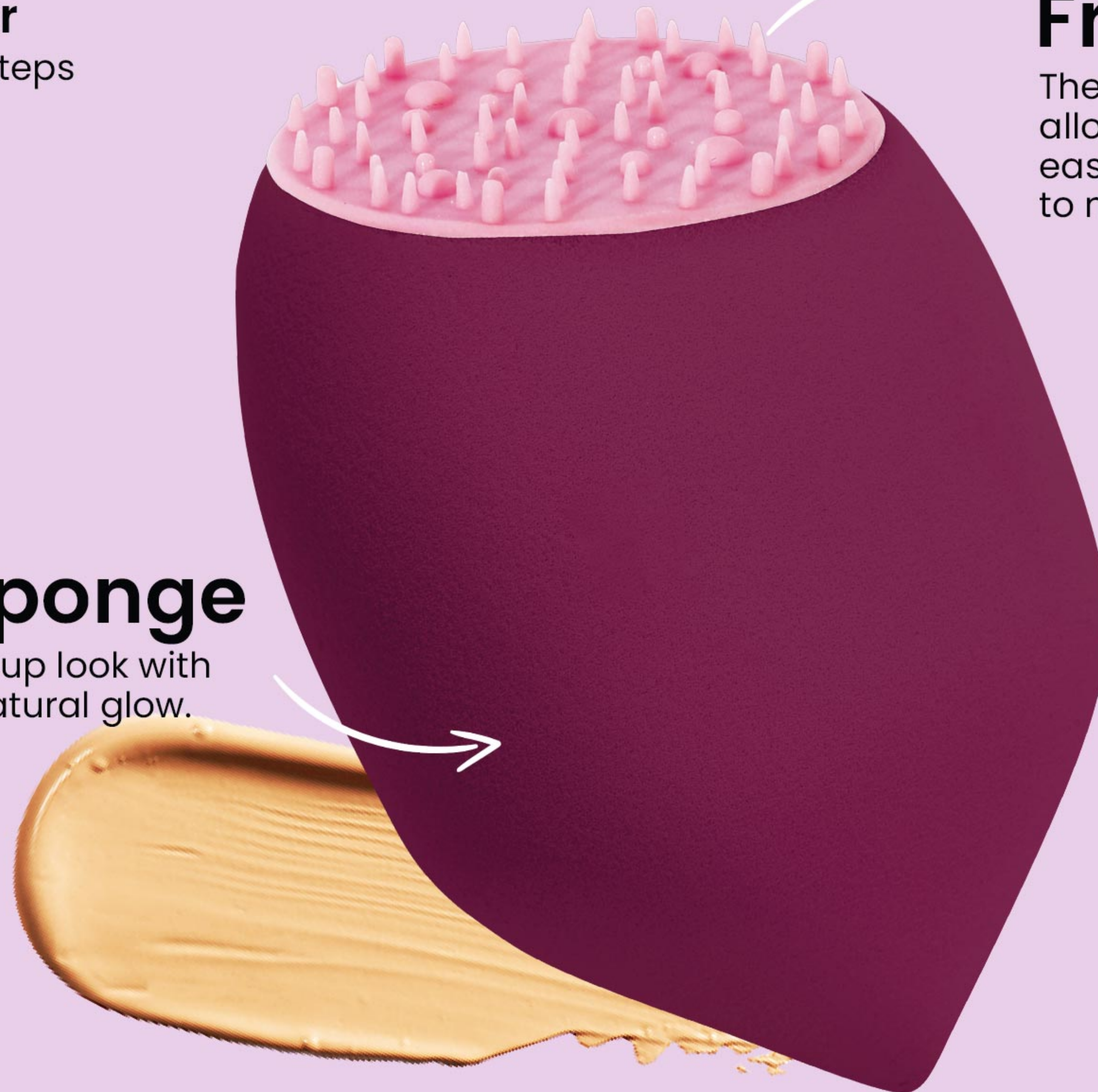
Applicators

Freckles Look

Cosmetic Applicator

Create a freckles look in 2 steps

patented



01

Freckles Dotting

The innovative silicone felt tip allows you to create freckles easily and with irregular shapes to make them look hyper-realistic.



02

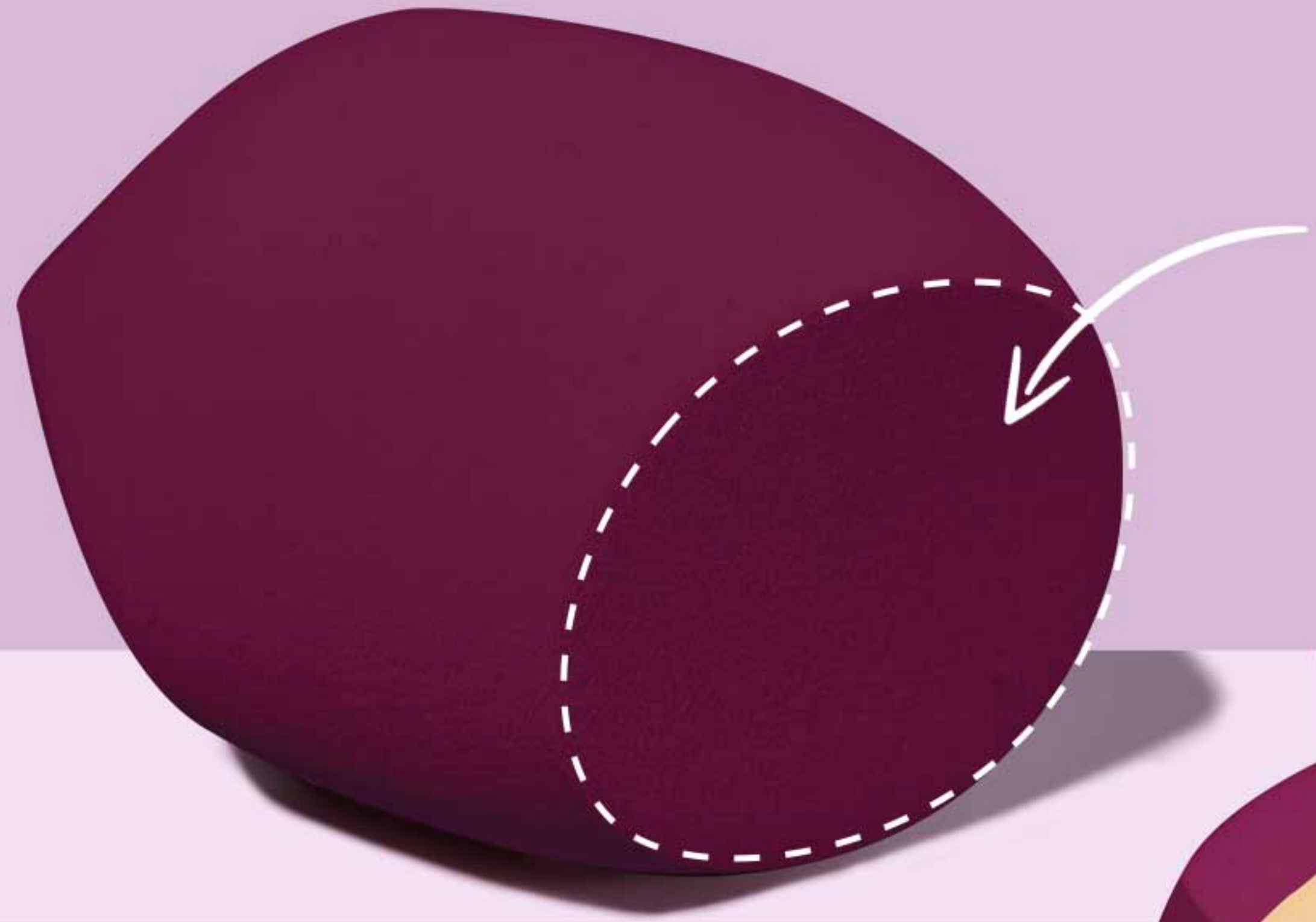
Blending Sponge

A flawless blended makeup look with no streaks, radiating a natural glow.



Helix Edge Makeup Sponge

Sku.No: 202210622
Size: 40*60mm
Material: PU



01

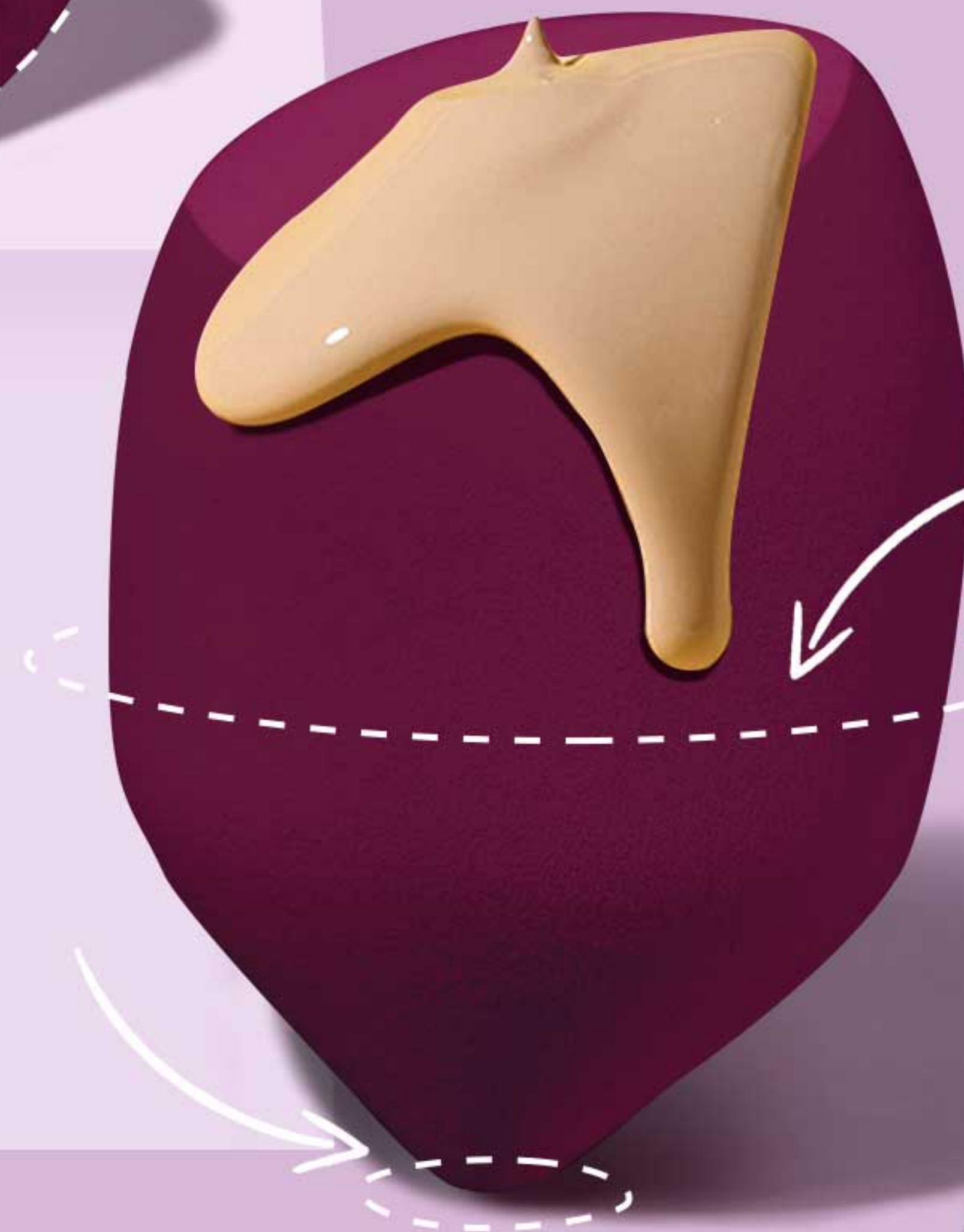
Flat Edge

Perfect for larger areas of the face such as forehead or cheeks.

02

Pointed tip

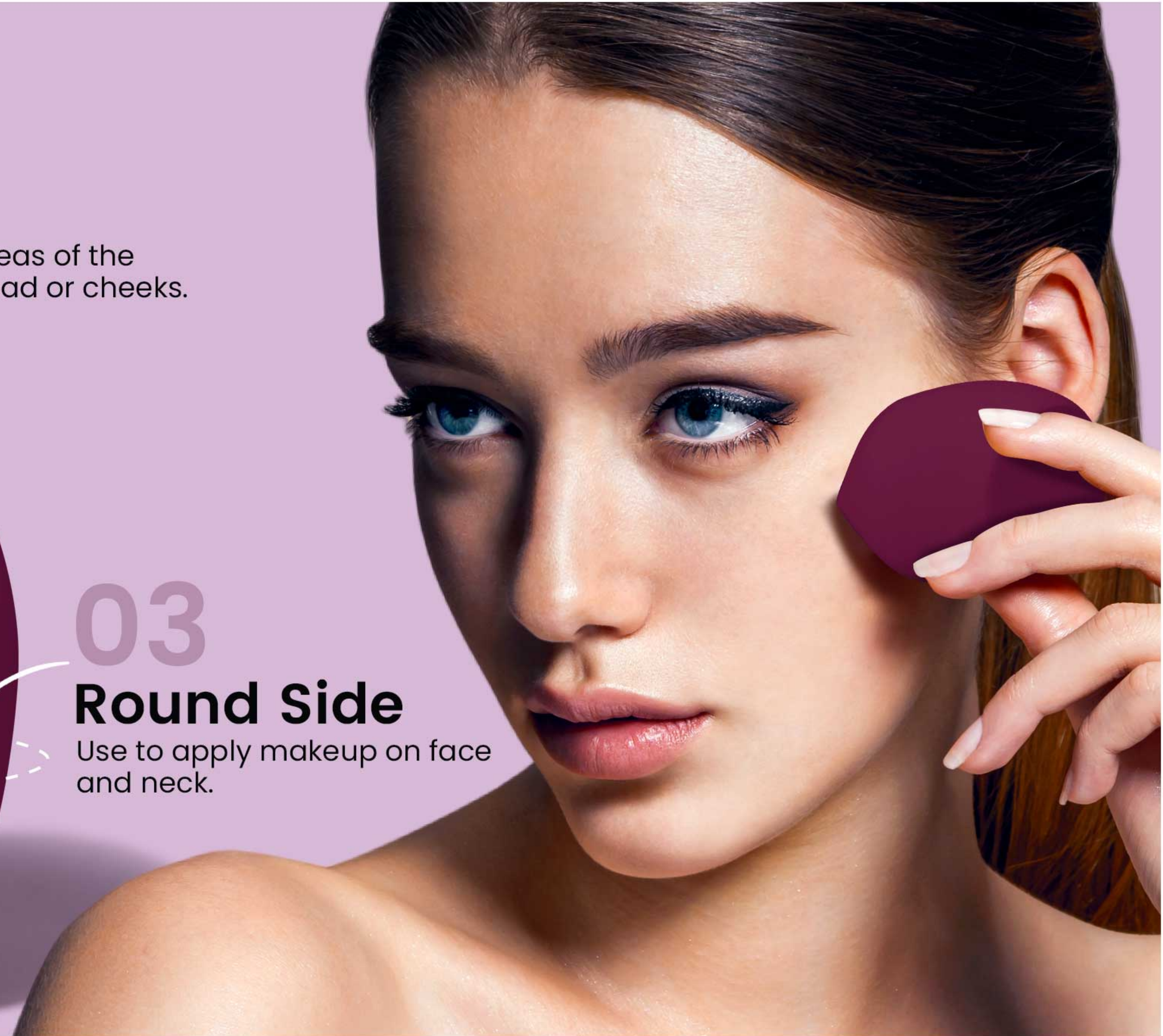
Perfect for smaller areas such as under the eyes, around the nose and lips.



03

Round Side

Use to apply makeup on face and neck.



Olive Cut Beauty Sponge

Sku.No: 202210624
Size: 40*60mm
Material: PU



01

Pointed tip -1

Perfect for smaller areas such as under the eyes, around the nose and lips.

02

Flat Edge

Perfect for larger areas of the face such as forehead or cheeks.

03

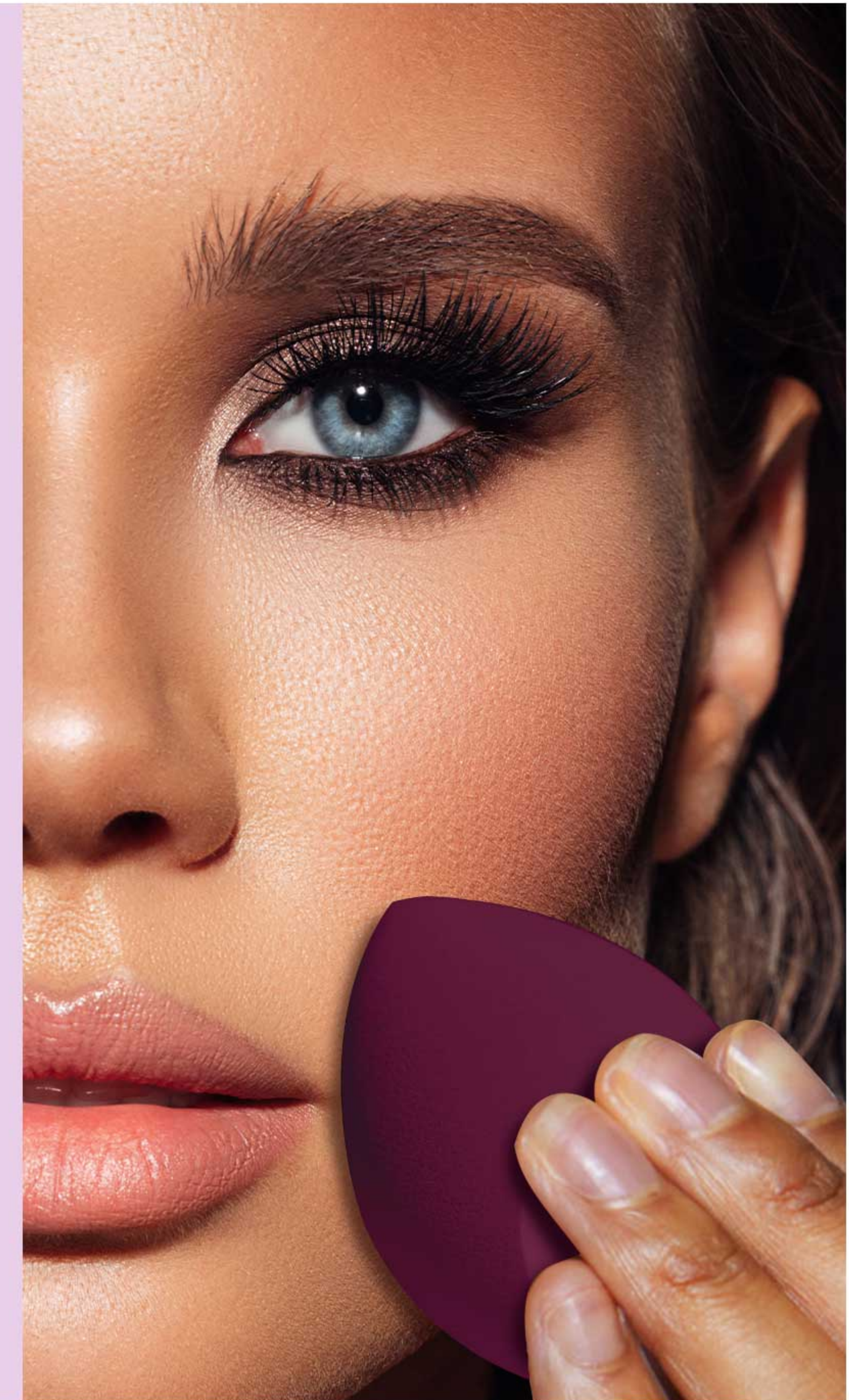
Round Side

Bounce and blend for seamless, all-over coverage.

04

Pointed tip-2

Spot-conceal blemishes for precise coverage



Tri Edge Beauty Sponge

Sku.No: 202210619
Size: 50*50*20mm
Material: PU

01

Flat Edge

Ideal for blurring and softening the lower lash line and brow bone for a seamless finish.

02

Small Edge

Perfect for precise contouring around the eyes, nose, and cheekbones, enhancing and defining facial features with ease.

03

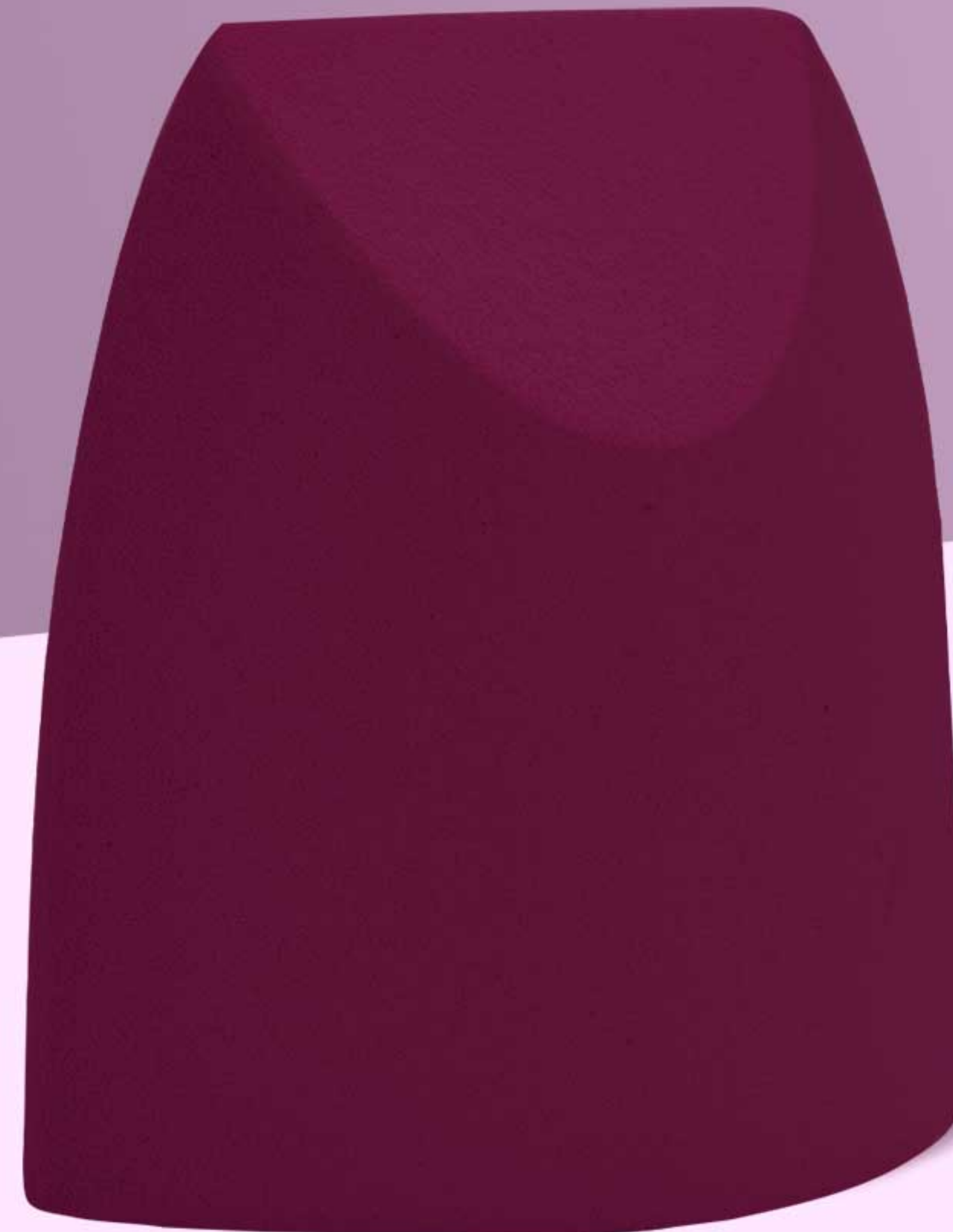
Arc surface

Blend makeup for a finished look

04

Large Edge

Apply foundation to the face with abouncing motion



Revolve Makeup Sponge

Sku.No: 202210623
Size: 40*60mm
Material: PU



01 Pointed Tip

Conceal + perfect hard-to-reach areas or blemishes

02 Arc Surface

Blend makeup for a finished look

03 Flat Edge

Perfect for larger areas of the face such as forehead or cheeks.

04 Unique Shape

Multi-purpose foam works with all liquids, creams + powders

Tri Sculpt Irregular Sponge

Sku.No: 202210620
Size: 62*45*30mm
Material: PU



01

Pointed Tip

Perfect for smaller areas such as under the eyes, around the nose and lips.

03

Small Edge

Perfect for precise contouring around the eyes, nose, and cheekbones, enhancing and defining facial features with ease.

02

Flat Edge

Perfect for larger areas of the facesuch as forehead or cheeks.

04

Arc Surface

Blend makeup for a finished look



Gyro Shape Beauty Sponge

01

All-in-One Versatility

Ideal for blending foundations, creams, and liquids with professional-level precision.

02

Fast & Flawless

Effortlessly achieve a smooth, streak-free finish in seconds.

03

Wet or Dry Perfection

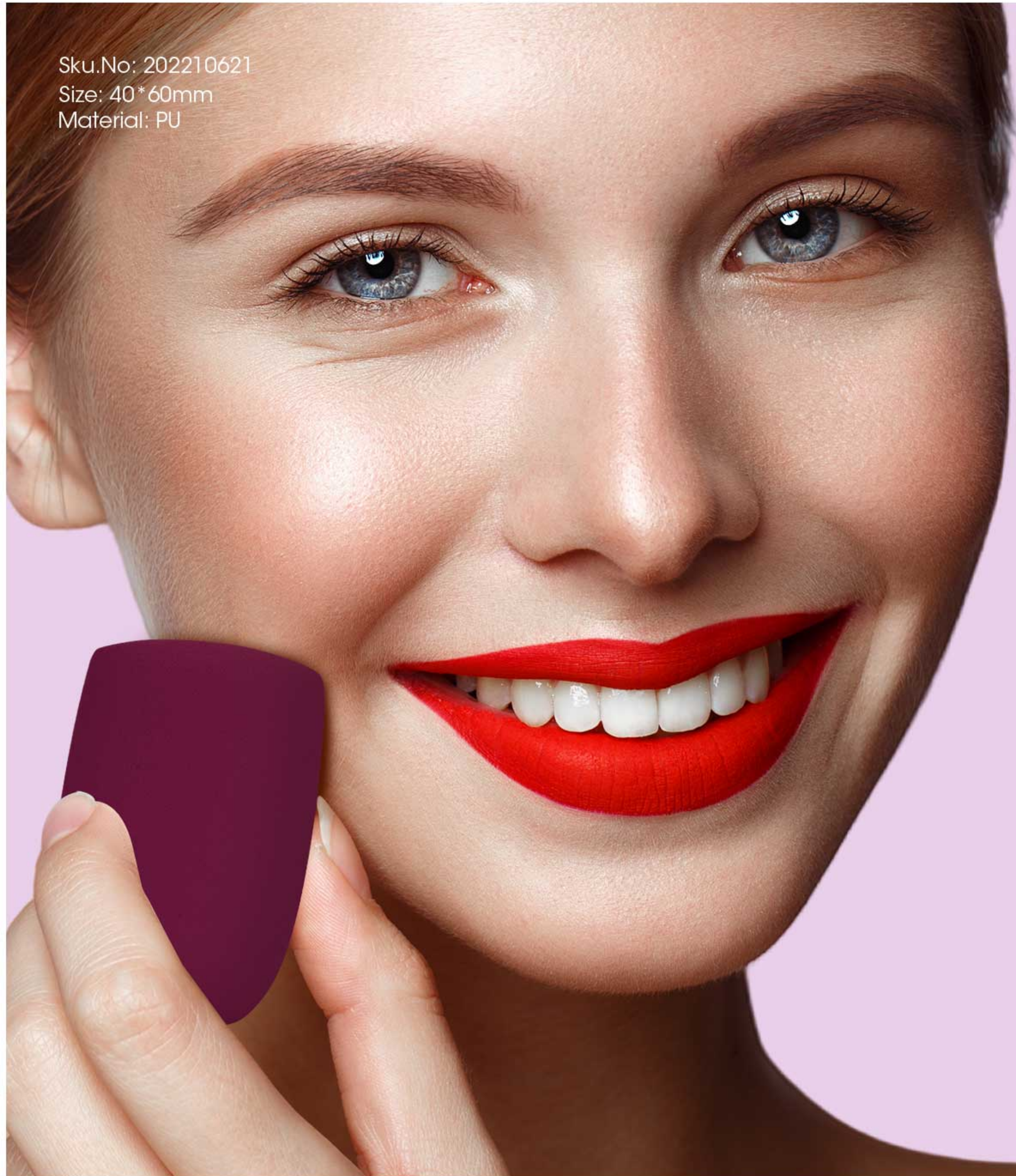
Designed for dual functionality, delivering consistent results in both wet and dry applications.



Sku.No: 202210624
Size: 40*60mm
Material: PU

Sharp Edge Beauty Sponge

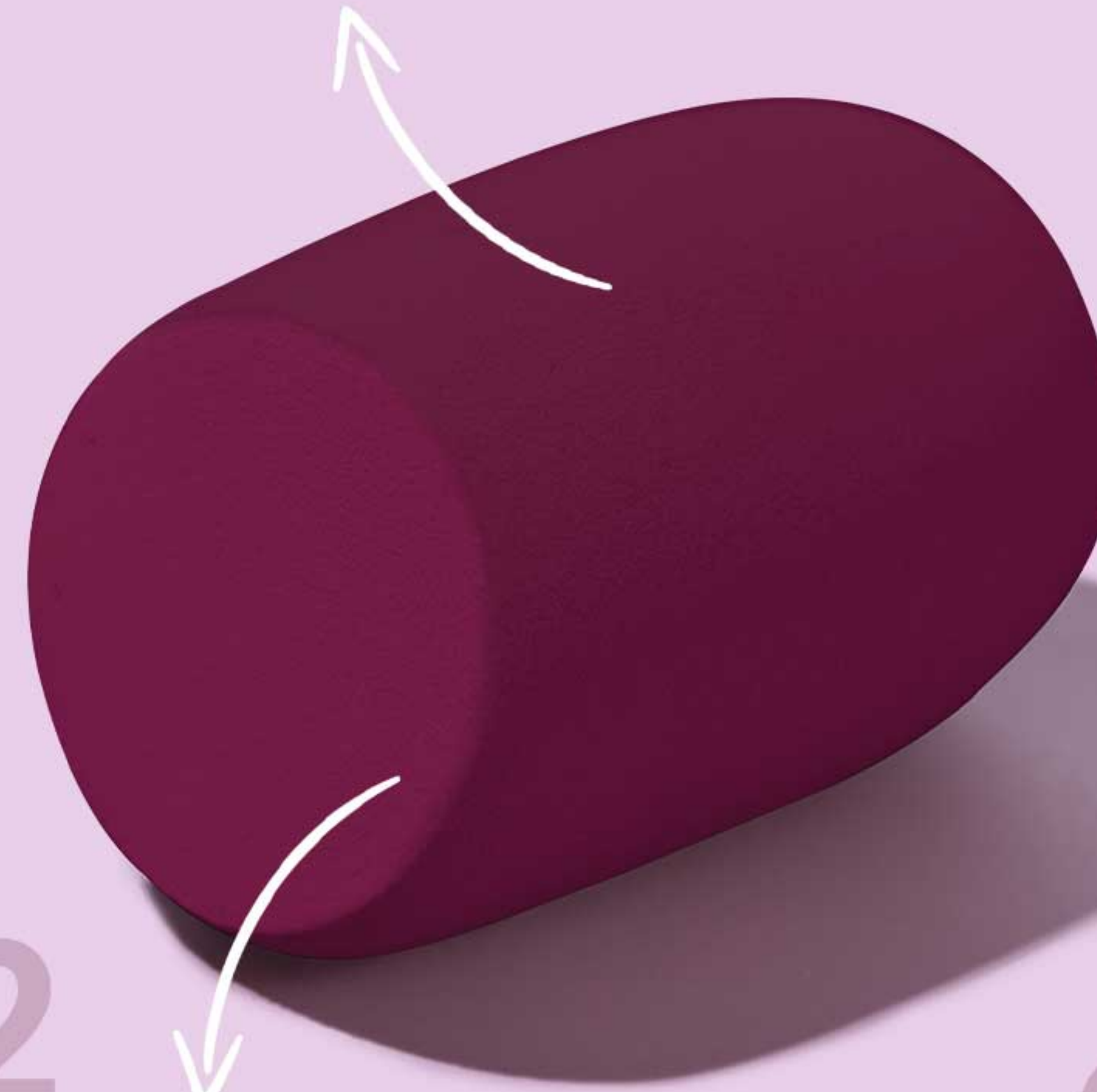
Sku.No: 202210621
Size: 40*60mm
Material: PU



01

Round Side

Bounce and blend for seamless, all-over coverage.



02

Flat Edge

Perfect for larger areas of the face such as forehead or cheeks.



03

Easy Application

works with all liquid, cream,
+ powder formulations

Iron Sculpt Sponge

Sku.No: 202210618
Size: 45*40*18mm
Material: PU



01

Base

Blend liquid +
cream makeup



02

Define

Contour +
blend out blush



03

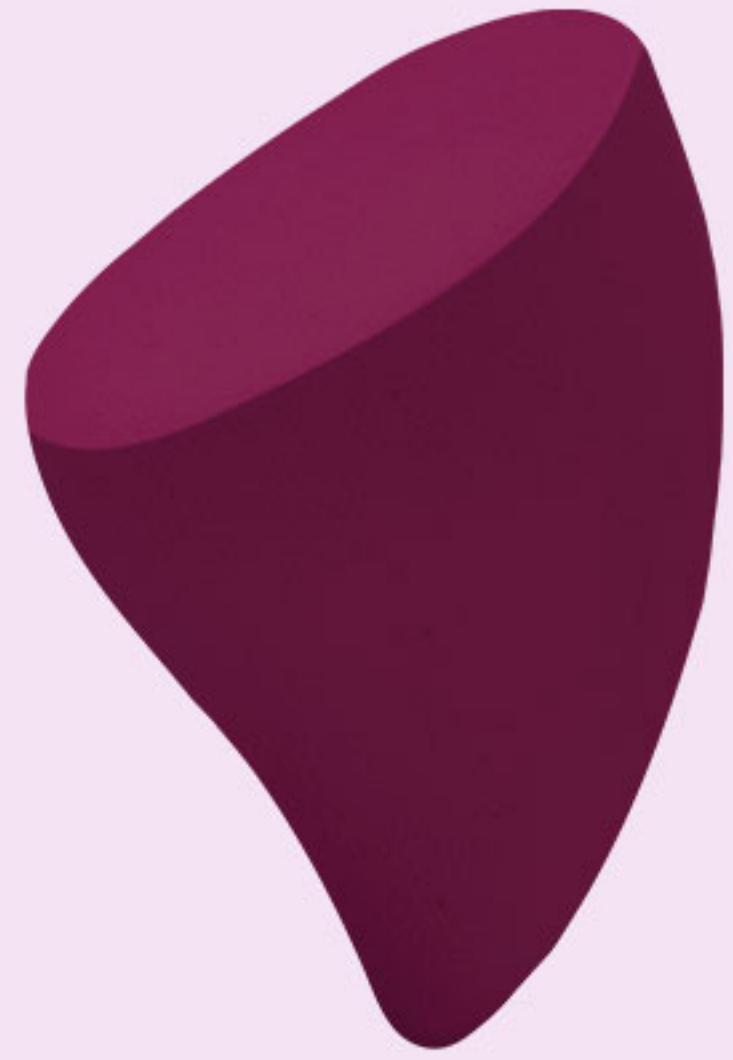
Under Eyes

Set makeup



Creative Curve Sponge

Sku.No: 202210640
Size: 40*60mm
Material: PU



01 Pointed Tip

Perfect for smaller areas such as under the eyes, around the nose and lips.

02 Arc Surface

Blend makeup for a finished look

03 Flat Edge

Perfect for larger areas of the facesuch as forehead or cheeks.

Applicators

I'm Not Lipstick

Cosmetic Applicator

Perfect for on-the-go touch-ups



patented



01

Sponge Applicator

Tip pointed precision
blending on

02

Compact Mirror

Touch up your look