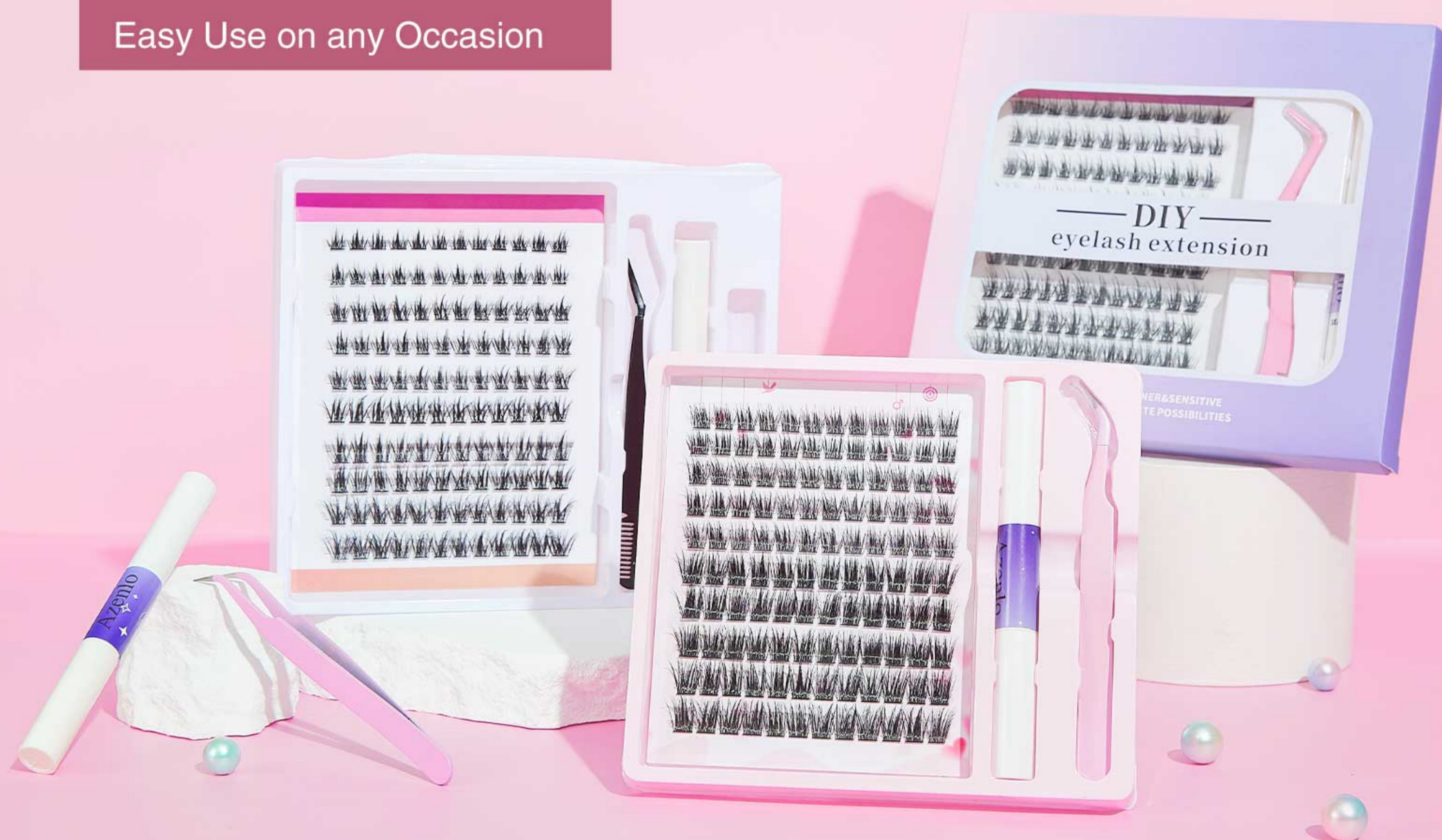


# DIY Eyelash Extension Kit

Portable Packaging

Easy Use on any Occasion





## # DIY Lash Extension Kit

- All-Inclusive Kits: Everything you need for perfect lashes—clusters, bond & seal adhesive, tweezers, and spoolie.
- Customizable Looks: Create natural or dramatic styles.
- Long-Lasting Hold: Secure, all-day wear.
- Reusable Lashes: Durable and reusable clusters.
- Salon-Quality at Home: Achieve professional results easily.
- Perfect for Any Occasion: Ideal for daily wear or special events.



Superfine Band



Easy to Apply



Stable Curl

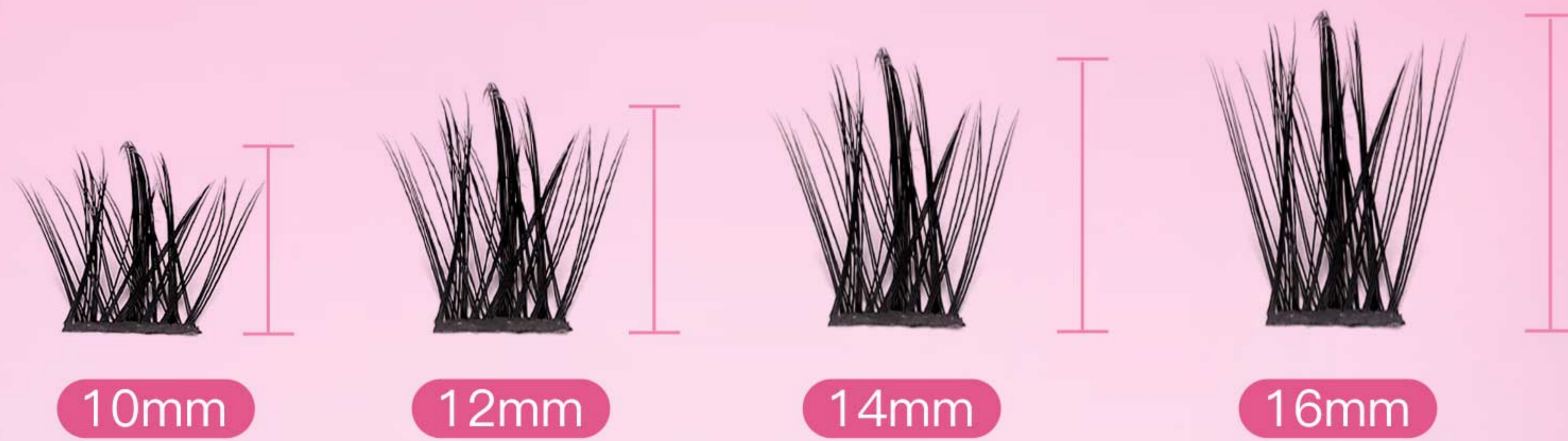


High quality

SKU:020233001970

Material: Chemical fiber

# # DIY CLUSTER Lashes Size



10mm

12mm

14mm

16mm



**Ultra-thin Lash Band**  
for 0 burdens soft wearing



**Perfect Curl**  
adds breathtaking 3D volume for  
a truly captivating look.



**Premium PBT Fibers**  
with a tapered end blend  
seamlessly with natural lashes.



**Sturdy Knot-free**  
can be reused up to 10 times  
if properly cared for.



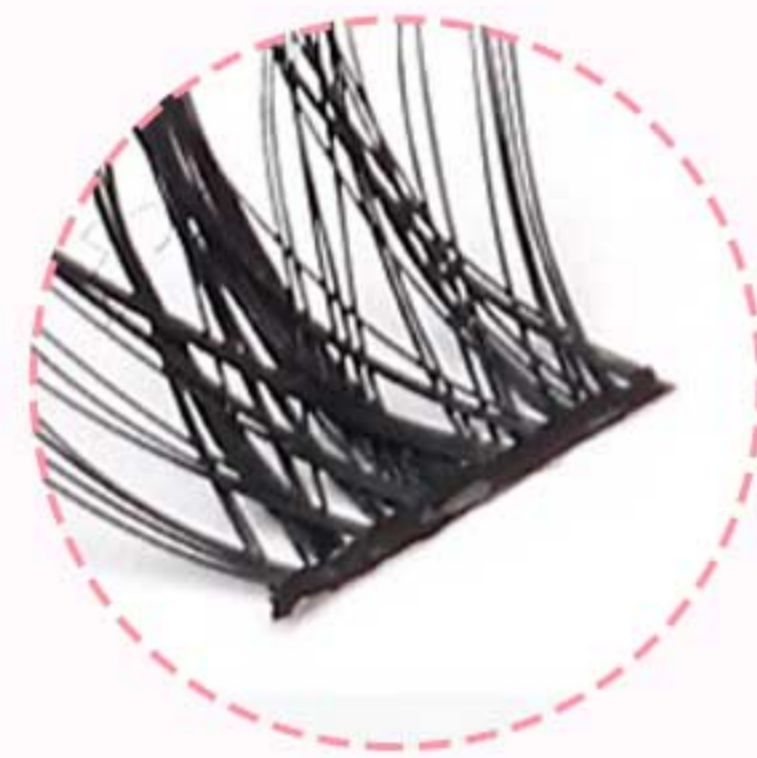
# # DIY Lashes 3 Advantages



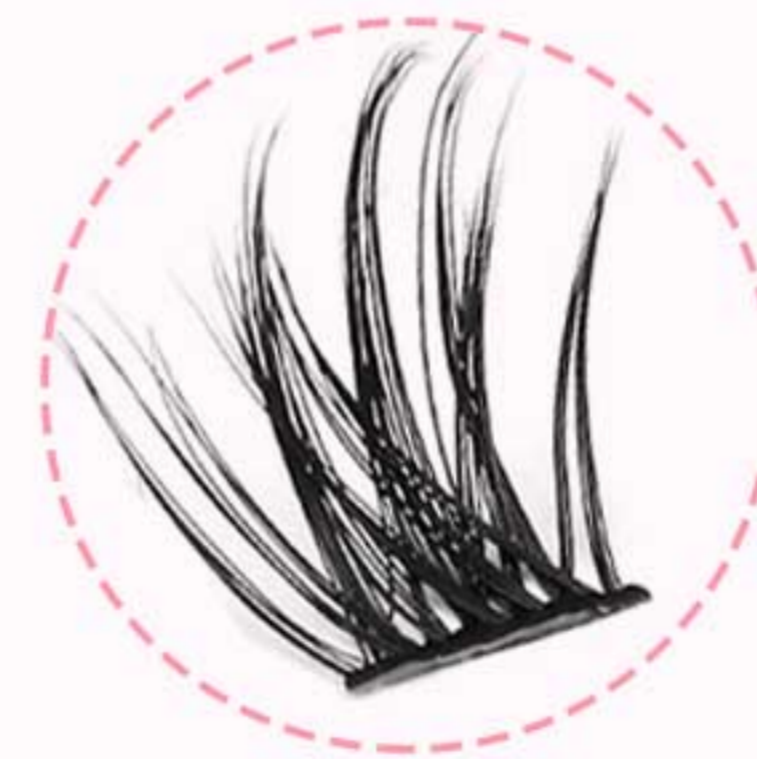
BEFORE



AFTER



Thin and lightweight



Lashes are distinct and elegant

1

## ▪ Friendly for beginners

Cluster eyelashes can be worn according to the matching length; Enjoy lash extension at home, DIY your beauty

2

## ▪ Different look depend on you

The eyelash extension kit can be diy according to the style you want to showcase

3

## ▪ Save time and budget

These big set offers all you need to work with at home; Save time and budget to go to lash extension salon

# # Double-ended Glue



- ✓ Lashes into place for around 1 week
- ✓ Faster drying time



## The 'bond':

Applied to the base of your natural lashes

## The 'seal':

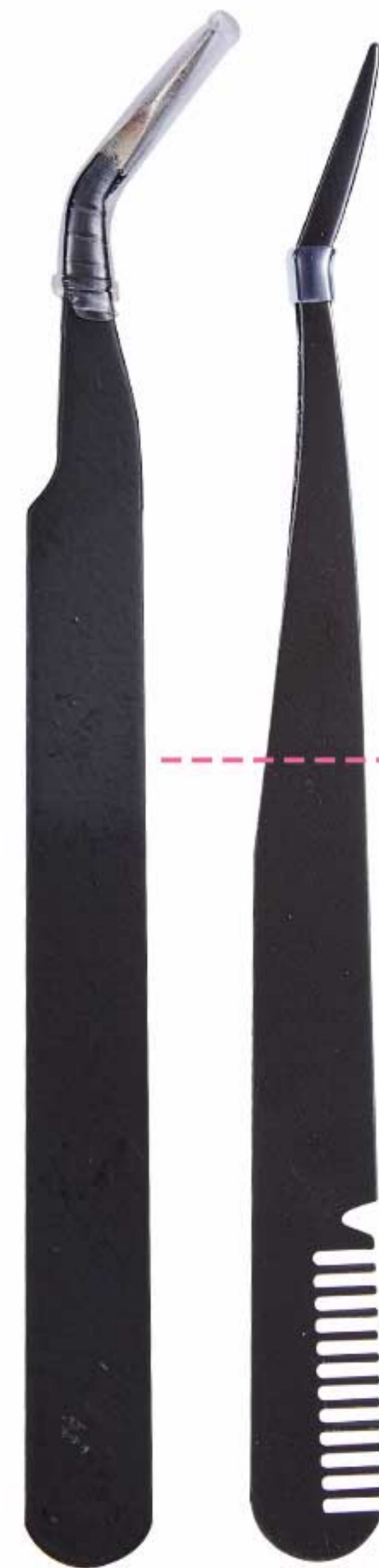
Locks your lashes in place once individual clusters are applied.

## EASY 3 STEPS APPLICATION



# # Must Have Tools

## ▪ tweezers



Accurate grip, friendly to beginners



Super fine hair brushing

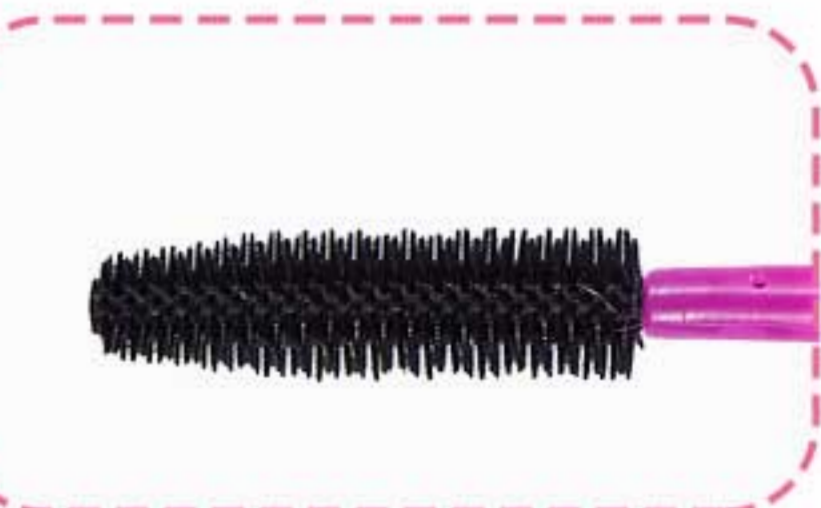


Easily comb and curl, leaving eyelashes firmly defined

## ▪ Eyelash comb



Elastic vertical brush for thick, full eyelashes



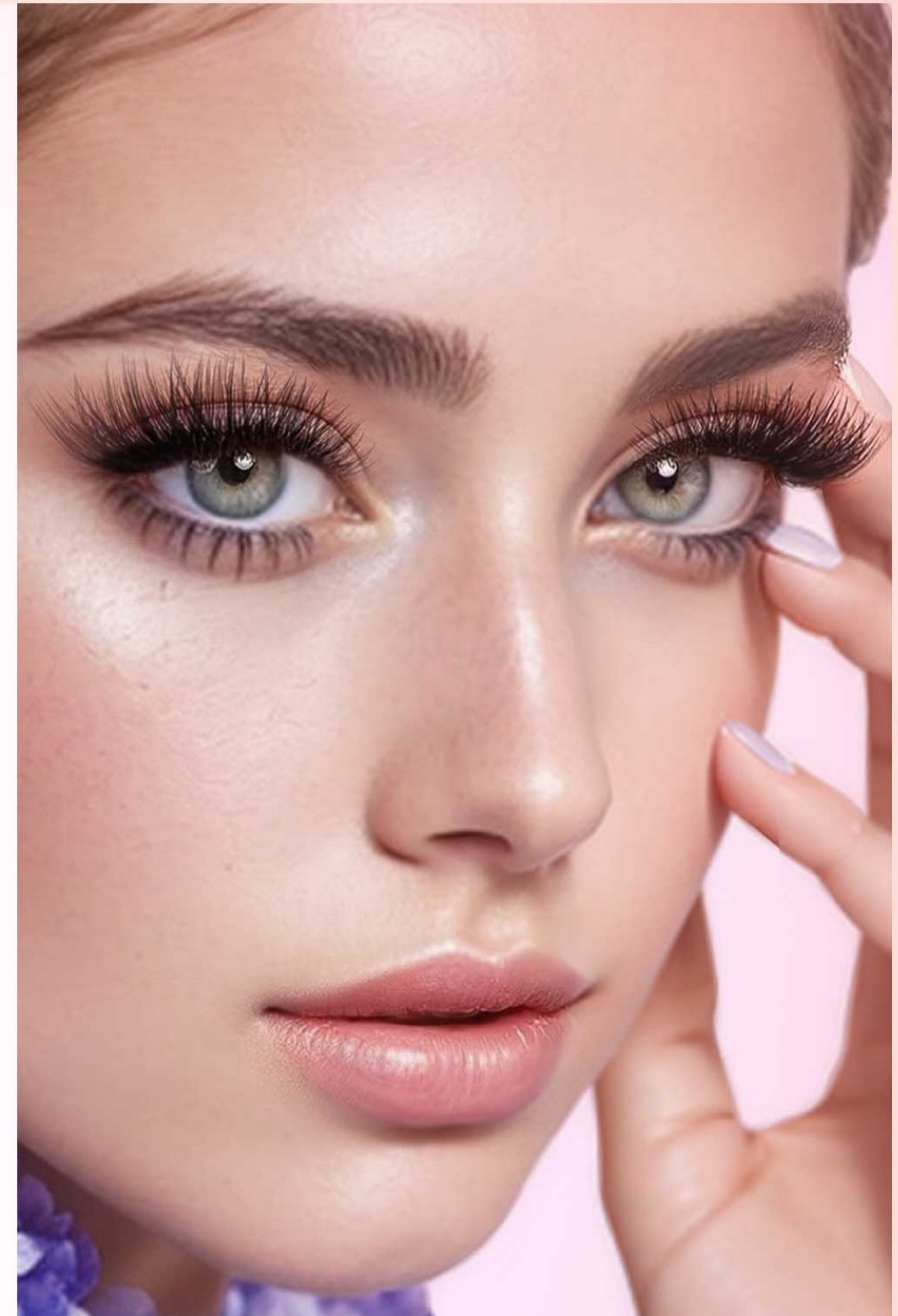
Spiral long straight brush head, accurately capture small eyelashes

# # 96 pcs Glam Lash DIY Extension Kit

- 96 large package eyelash section set, with tweezers and double-headed glue, brush, tweezers tail with eyelash comb, more convenient to use, simple, outside the box packaging, more grade.

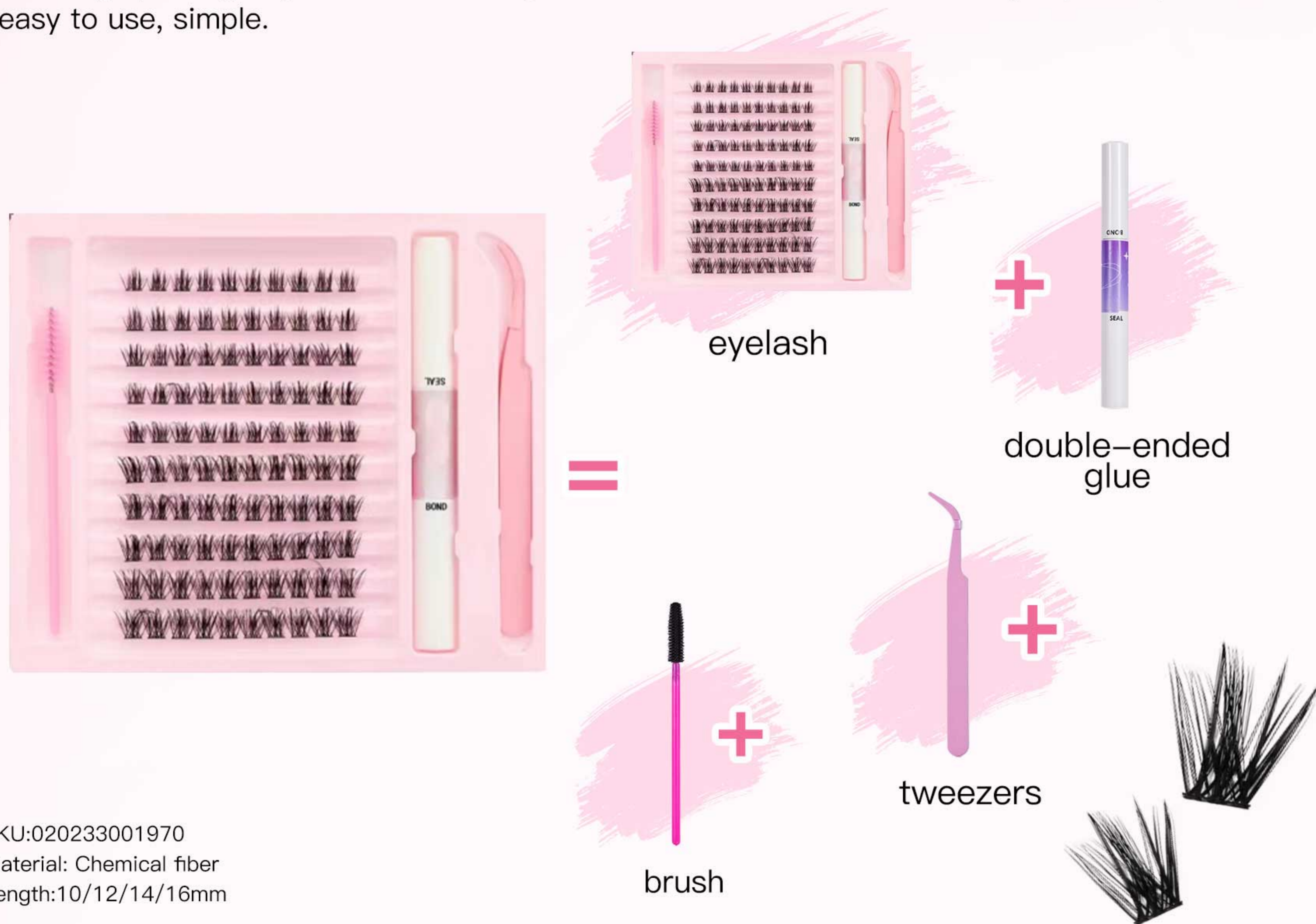


SKU:020233001969  
Material: Chemical fiber  
Length:10/12/14/16mm

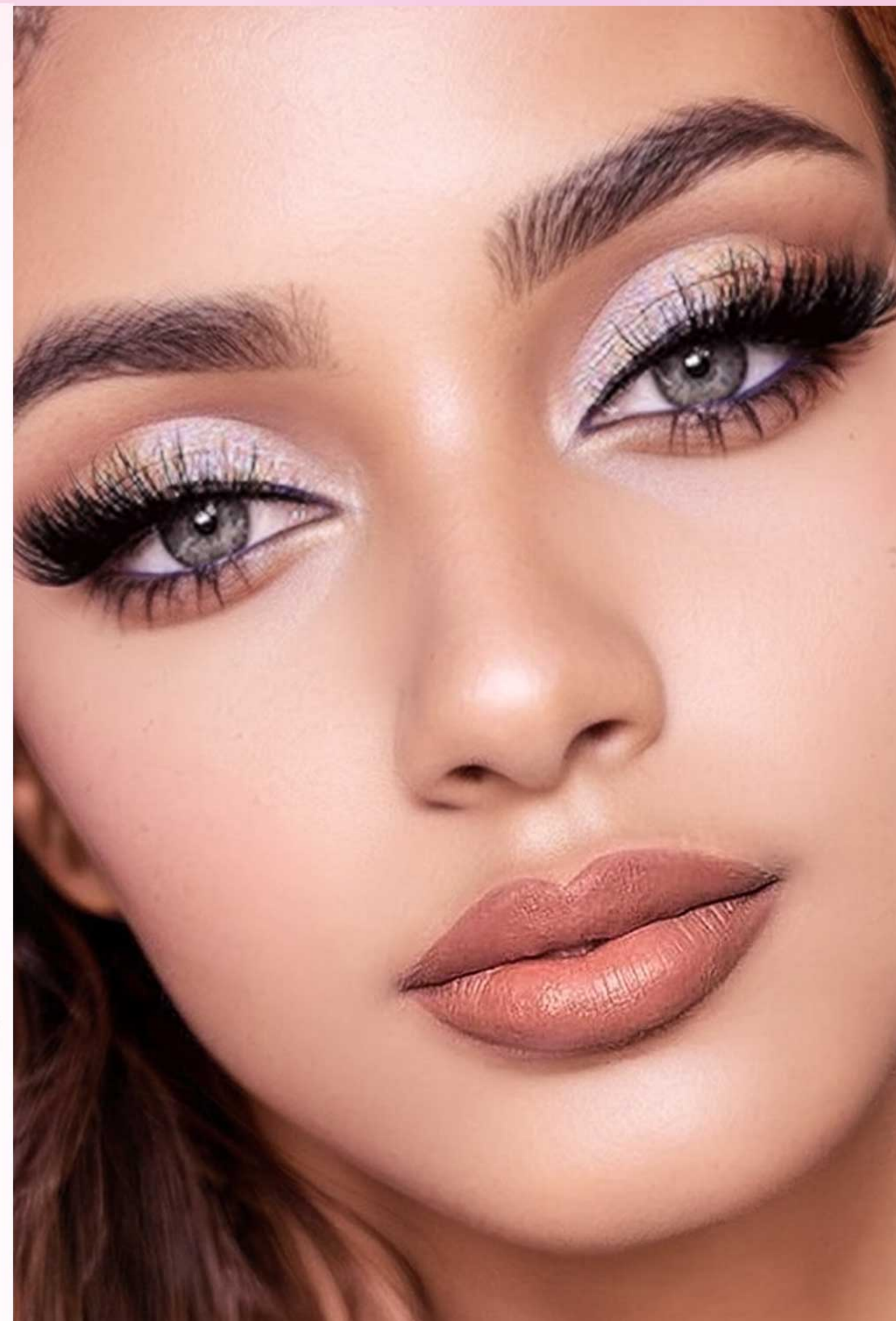


# # 100 pcs Glam Lash DIY Extension Kit

- 100 large package eyelash section set, with tweezers and double-ended glue, brush, easy to use, simple.



SKU:020233001970  
Material: Chemical fiber  
Length:10/12/14/16mm



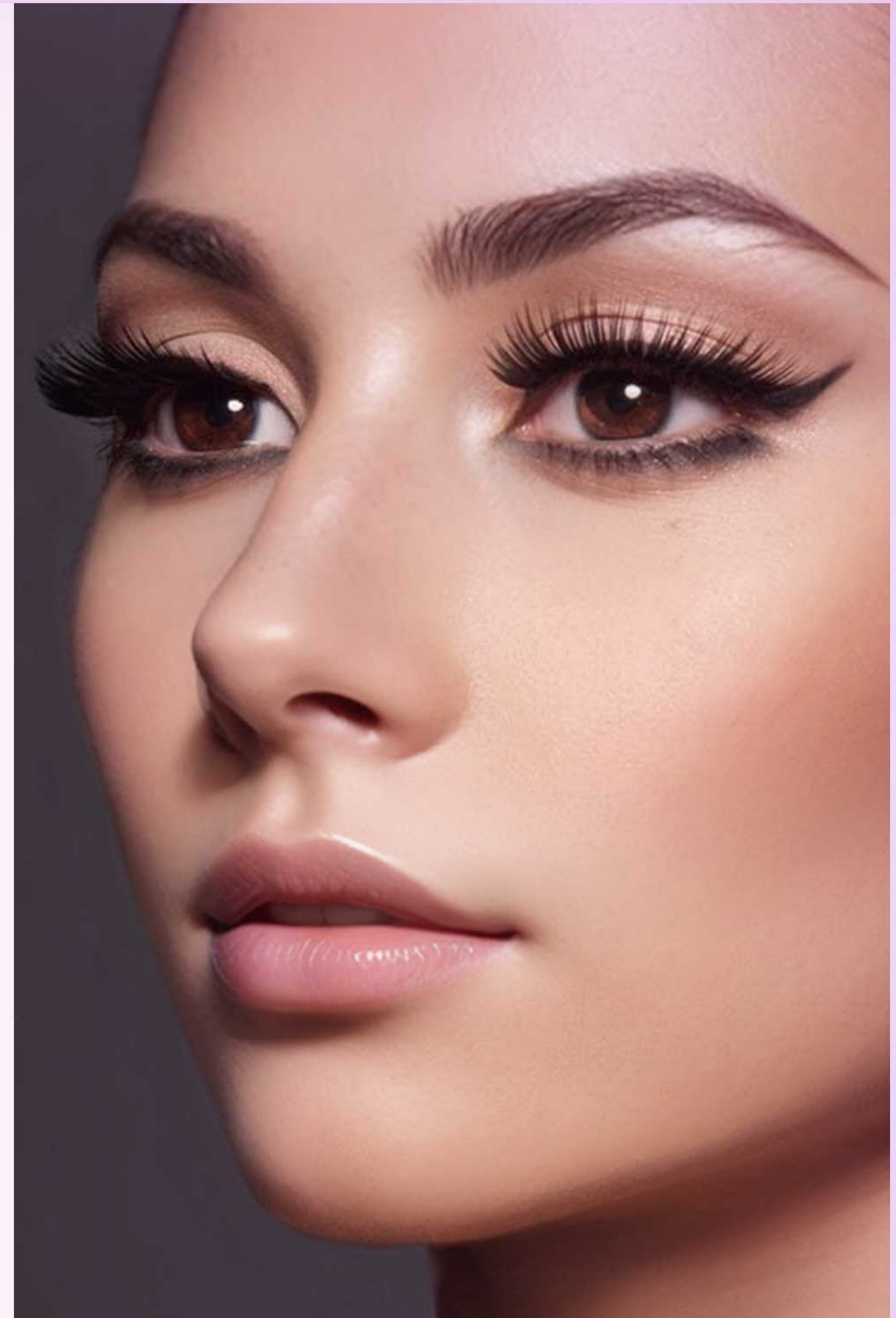


# # 120 pcs Luxe Lash DIY Extension Kit

- 120 large volume eyelashes set with tweezers with eyelash comb at the end, double glue and mascara brush, easy to use, larger capacity, longer use.



SKU:020233001971  
Material: Chemical fiber  
Length:10/12/14/16mm



# # More Option

Option A



Eyelash:120pcs  
Length:10/12/14/16mm  
The set includes: eyelash+tweezers+  
Double-ended glue

Option B



Eyelash:144pcs  
Length:10/12/14/16mm  
The set includes: eyelash+tweezers+  
Double-ended glue

Option C



Eyelash:96pcs  
Length:10/12/14/16mm  
The set includes: eyelash+tweezers+  
Double-ended glue+eyelash comb

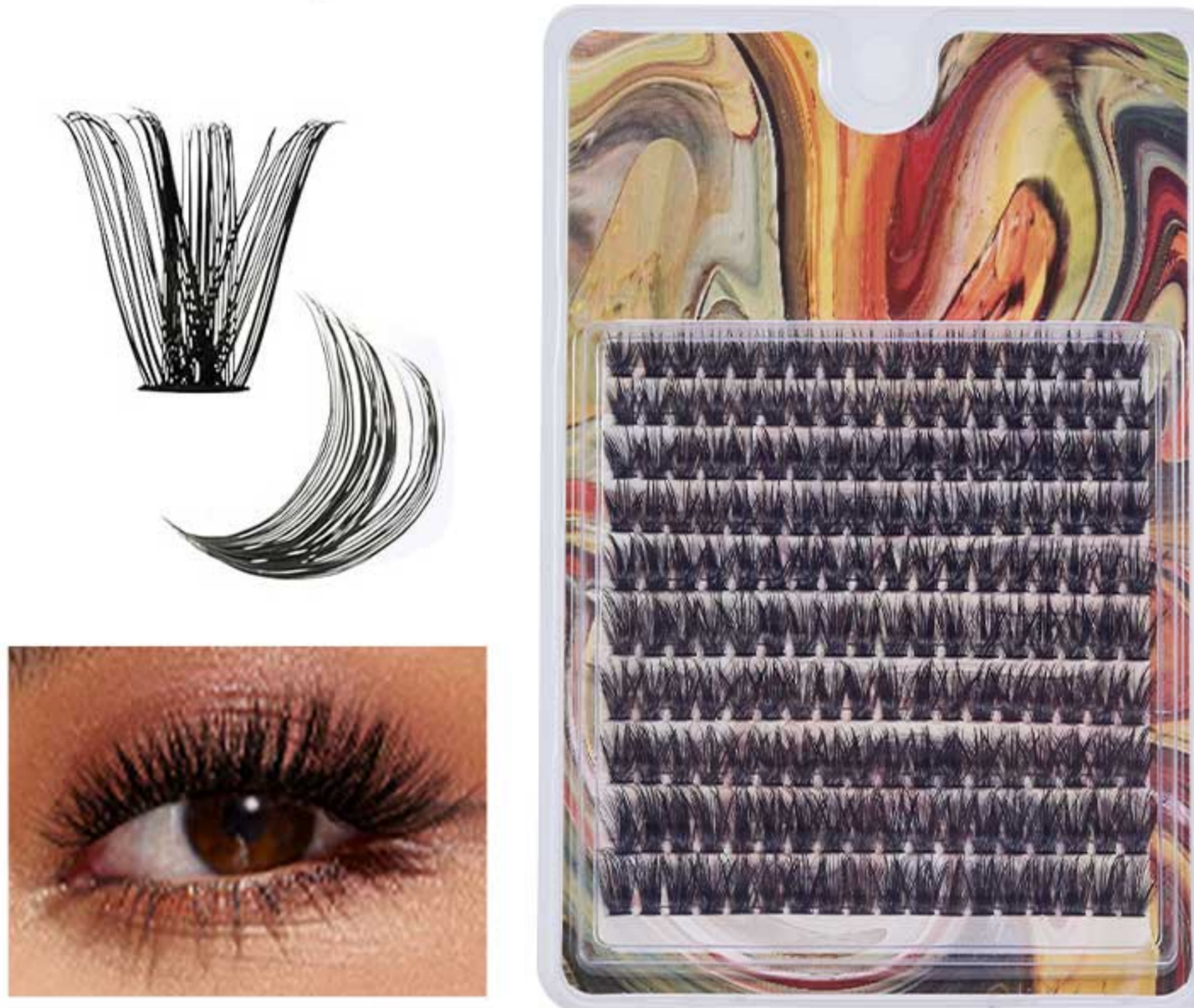
# # More Option

## Option D



Eyelash:120pcs  
Length:10/12/14/16mm  
The set includes: eyelash+tweezers with  
an eyelash comb+Double-ended glue

## Option E



Eyelash:180pcs  
Length:10/12/14/16mm

## Option F



Eyelash:120pcs  
Length:10/12/14/16mm  
The set includes: eyelash+glue