

CURLING

Eyelash Curler

- ♥ *Conforms naturally to different eye shapes*
- ♥ *ensuring a perfect fit.*

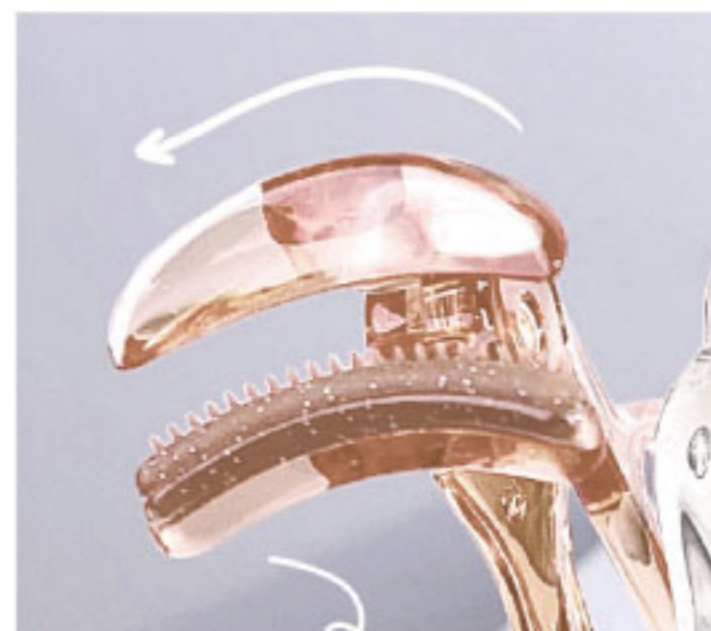
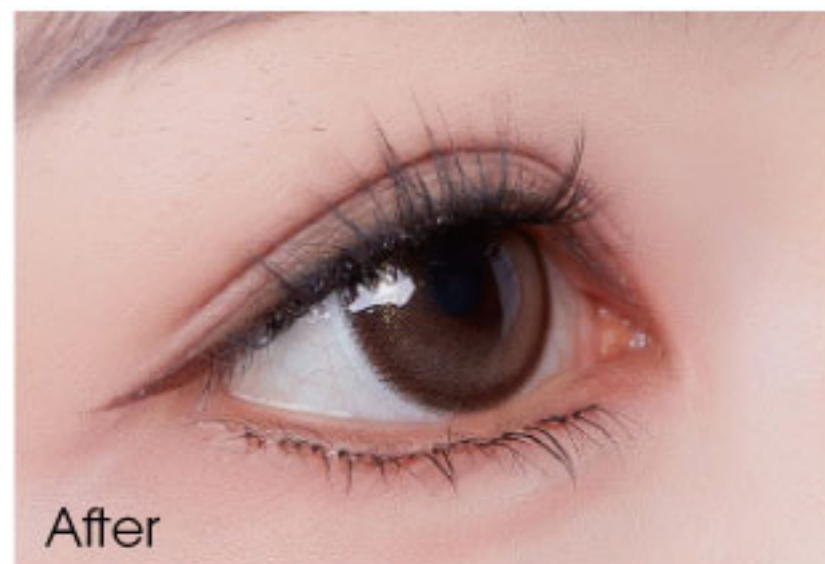


Curl your eyelashes easily

Pure Lift Silicon Eyelash Curler

Effortless Use:

Achieve beautifully curled lashes quickly and accurately.



Natural Fit: Curvature adapts to various eye shapes for optimal results.



Local splint : Curl your eyelashes around the corner or at the end of your eyes.



Precision Lash Separator: Built-in comb ensures perfectly defined lashes with ease.



Wide-Angle Design: Large clamp fits comfortably at the lash base, enhancing curl and longevity.

SKU.NO:0202240335
Material:PC+ Silicone
Size:Wide Angle 9.5*3.5cm/
local 9.5*1.5cm

Lash Sculpt Precision Silicon Curler

Versatile Options:

Available in both targeted and wide-angle styles for personalized use.

Wide-angle clamp



Local splint



User-Friendly Design: Easily achieve beautifully curled lashes with a simple press.



Perfect Fit: Curvature naturally conforms to various eye shapes for optimal curling.

Elegant Matte Finish:

High-end metallic texture for a luxurious feel.



SKU.NO:0202240336

Material:Zinc alloy

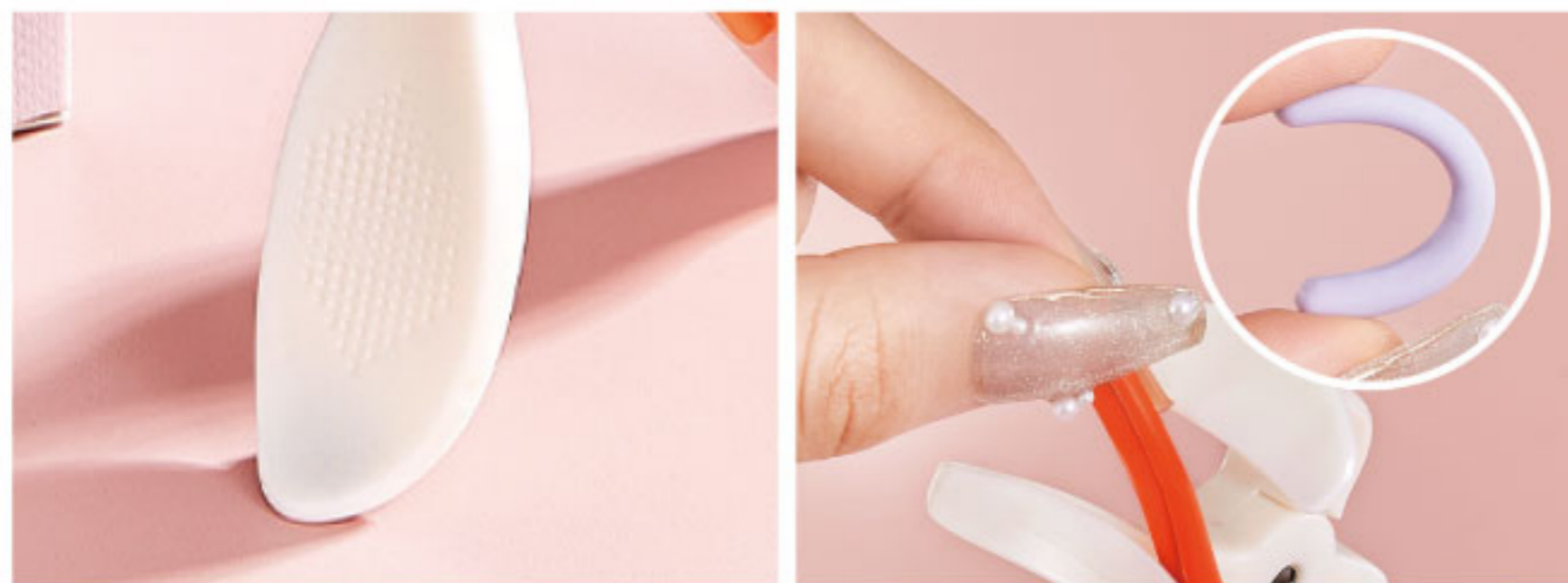
Size:Wide Angle 9.6 x 7cm/

Part 9.2 x 1cm

Wide-Angle Ergonomic Lash Curler



- **Effortless to Use:** Curl your eyelashes easily, and create long-lasting eyelash curl.



- **Ergonomic Handle:** Features grooves and textured grips for secure, slip-free use.
- **Extended Lifespan:** Comes with 2 extra silicone pads to ensure prolonged use.



Compact Precision Dual-Head Design Lash Curle



Wide-Angle Curvature:

Fits naturally with the eye's shape, ensuring a smooth curl.



Precision Grip Eyelash Curler



Eye-Conforming Design: Adapts naturally to your eye shape for a flawless curl.



Effortless Operation: Makes curling your lashes easy and comfortable.



Perfect Curvature: Curling head is designed to fit the natural shape of your eyes.



Dual-Lock Finger Design: Ensures a stable, secure grip for more controlled curling.

SKU:NO:0202240331
Material:ABS+ silicone
Size:8.7*8.3cm



Professional Results:

Achieve beautifully lifted, long-lasting lashes with minimal effort.




Elegant Loop Lash Curler

SKU.NO:0202240333

Material:Iron wire

Size:12.5*3.7cm

 **Enhanced Grip:**
Allows for even pressure distribution, ensuring perfectly curled lashes.



 **Effortless Curling:**
Designed for smooth and easy operation, providing long-lasting results.



 **Comfortable & Secure:**
Ergonomic handle makes curling lashes comfortable and efficient.



 **Large Opening Design:**
Accommodates multiple fingers for greater control and ease of use.








 **Professional Finish:**
Achieve salon-quality curls at home with minimal effort.



Natural Fit Wide-Angle Lash Curler

SKU:NO:0202240332
Material:Iron wire+carbon steel
Size:11.5*3.8cm



-  **Wide-Angle Curvature:**
Naturally conforms to the shape of your eyes, ensuring a perfect fit.
-  **Pinch-Free Design:**
Curler aligns with your eye contours to prevent pinching or injury.
-  **Long-Lasting Curl:**
Enhances lash length and curl, providing a lasting lift.
-  **Ergonomic Handle:**
Comfortable and easy to grip, allowing for precise control.
-  **Effortless Operation:**
Designed for smooth, hassle-free use, ensuring beautiful results every time.

