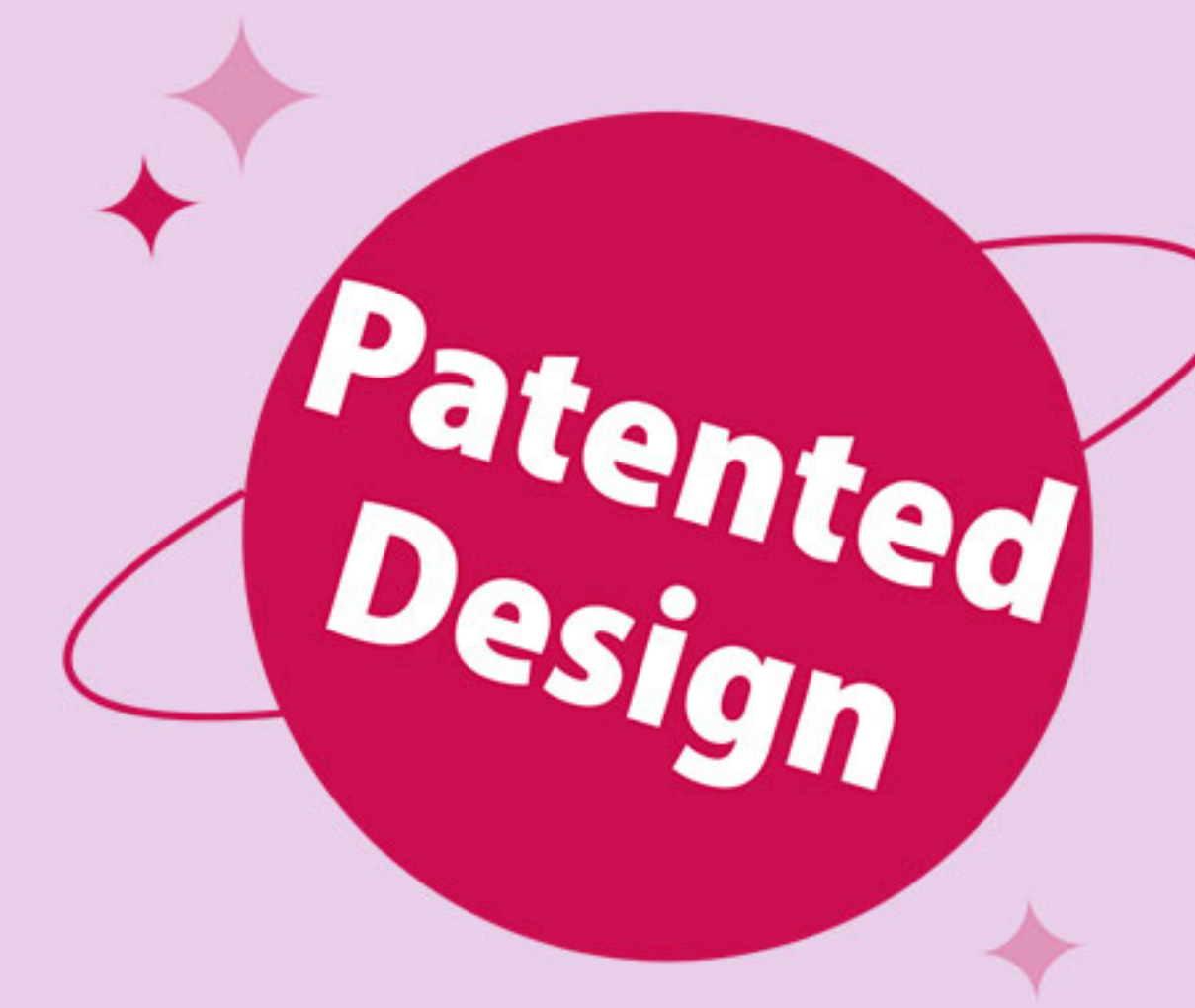


# INNOVATIVE DESIGN SPONGE

One Stop Beauty Accessory Supply



Innovative Design



Patented Technology



Gentle on Skin



Versatile Use



Wet & Dry Dual Use



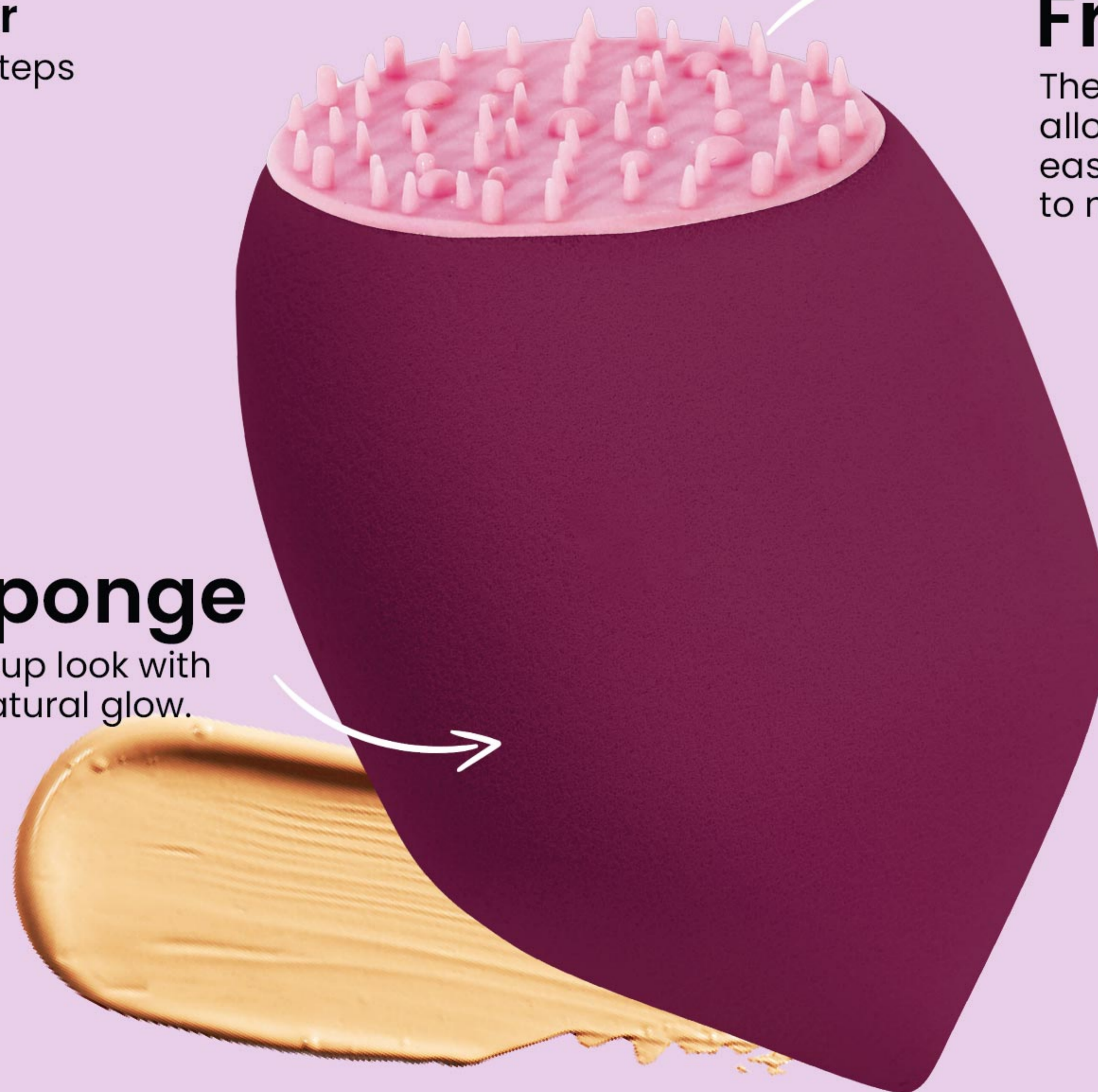
# # Applicators

## Freckles Look

Cosmetic Applicator

Create a freckles look in 2 steps

patented



### 01

## Freckles Dotting

The innovative silicone felt tip allows you to create freckles easily and with irregular shapes to make them look hyper-realistic.

### 02

## Blending Sponge

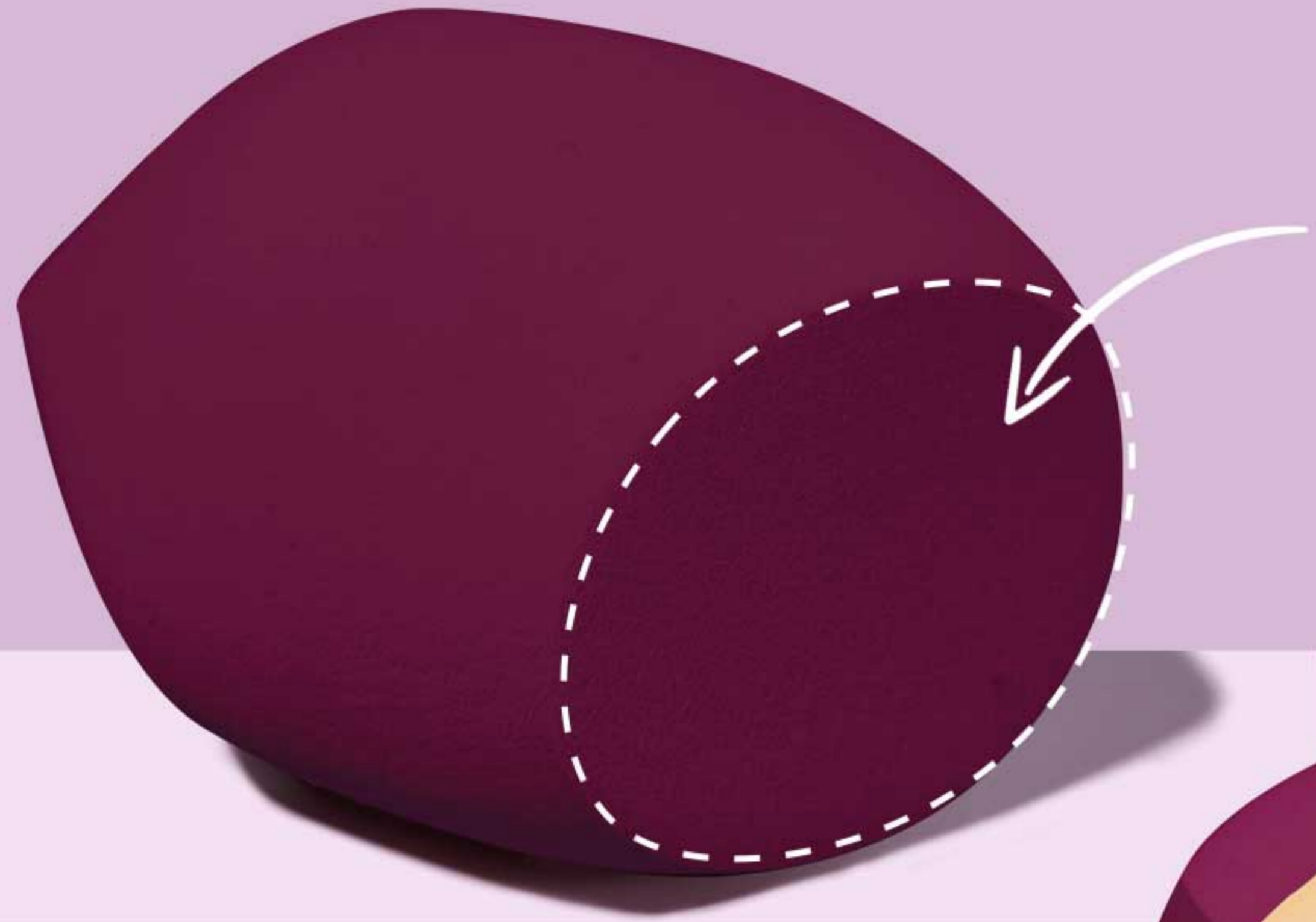
A flawless blended makeup look with no streaks, radiating a natural glow.





# # Helix Edge Makeup Sponge

Sku.No: 202210622  
Size: 40\*60mm  
Material: PU

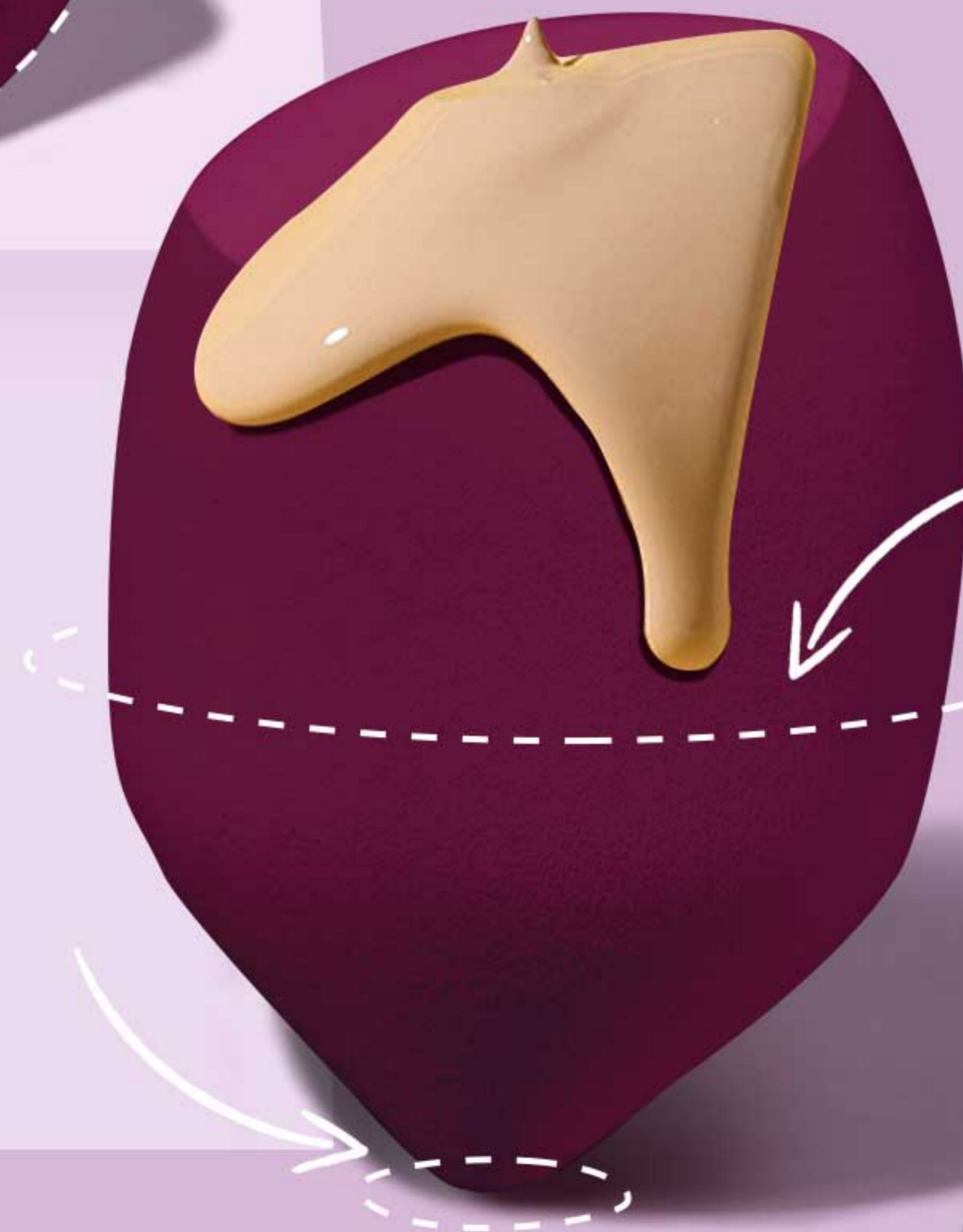


## 01 Flat Edge

Perfect for larger areas of the face such as forehead or cheeks.

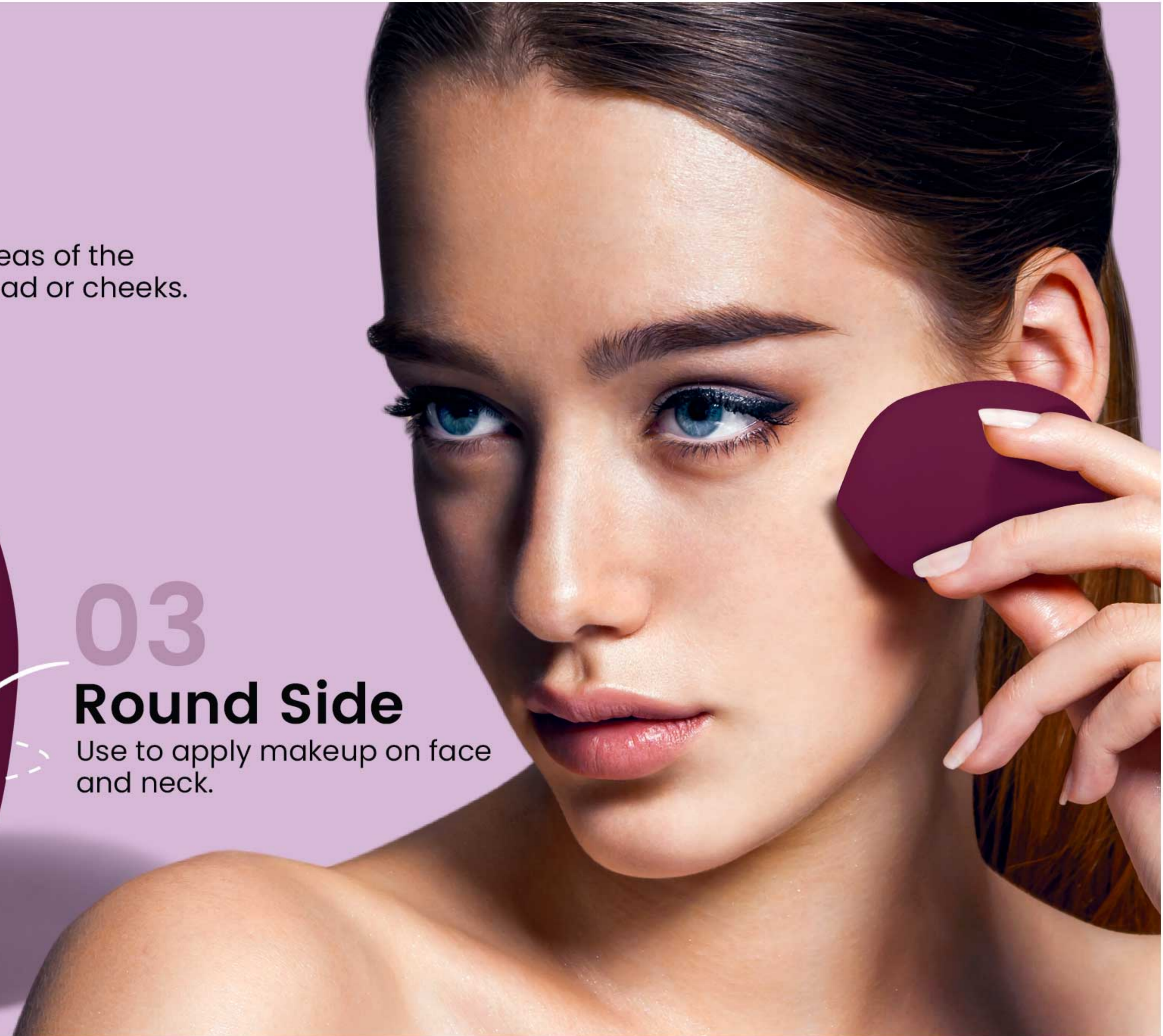
## 02 Pointed tip

Perfect for smaller areas such as under the eyes, around the nose and lips.



## 03 Round Side

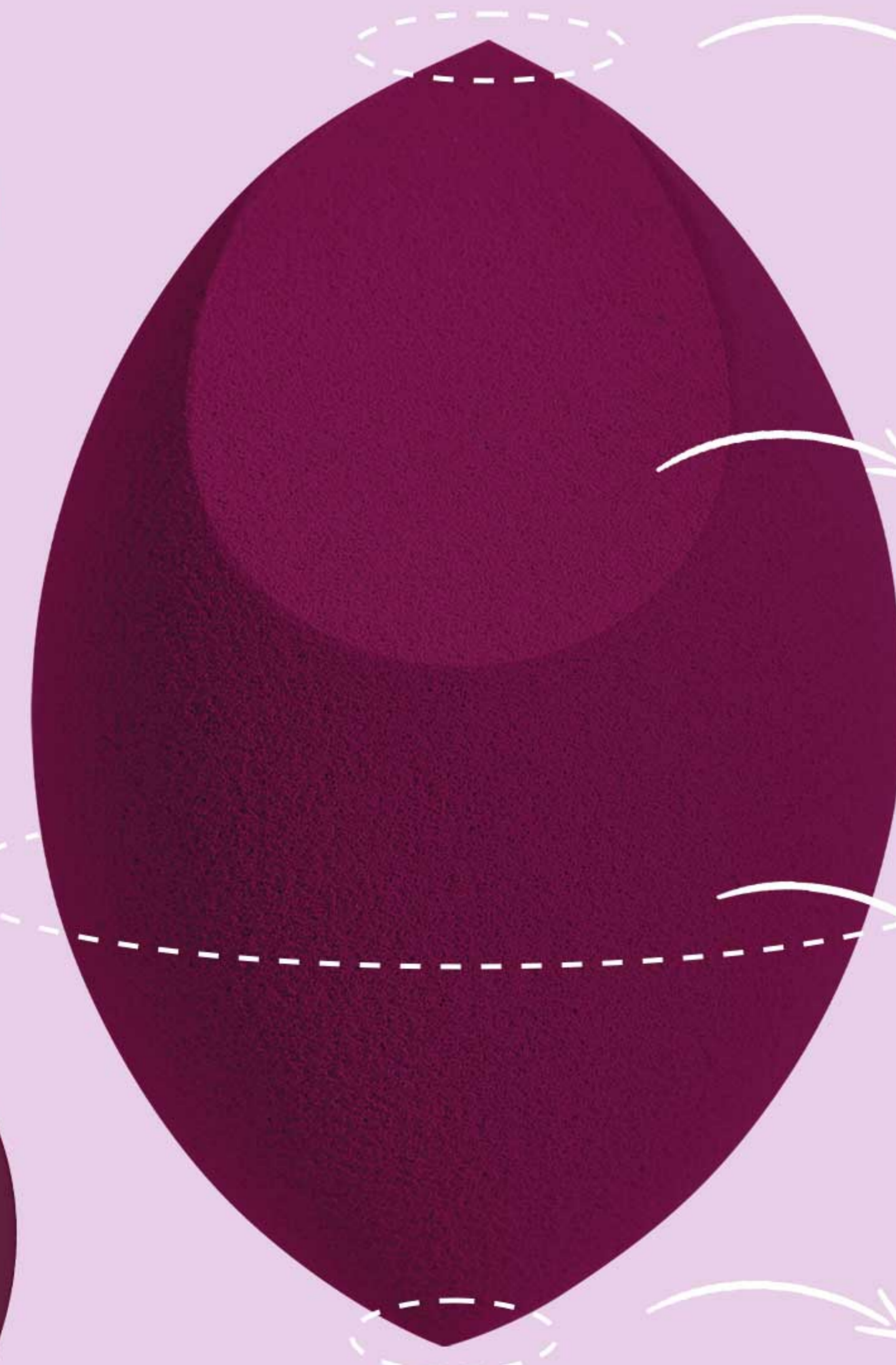
Use to apply makeup on face and neck.





# # Olive Cut Beauty Sponge

Sku.No: 202210624  
Size: 40\*60mm  
Material: PU



01

## Pointed tip -1

Perfect for smaller areas such as under the eyes, around the nose and lips.

02

## Flat Edge

Perfect for larger areas of the face such as forehead or cheeks.

03

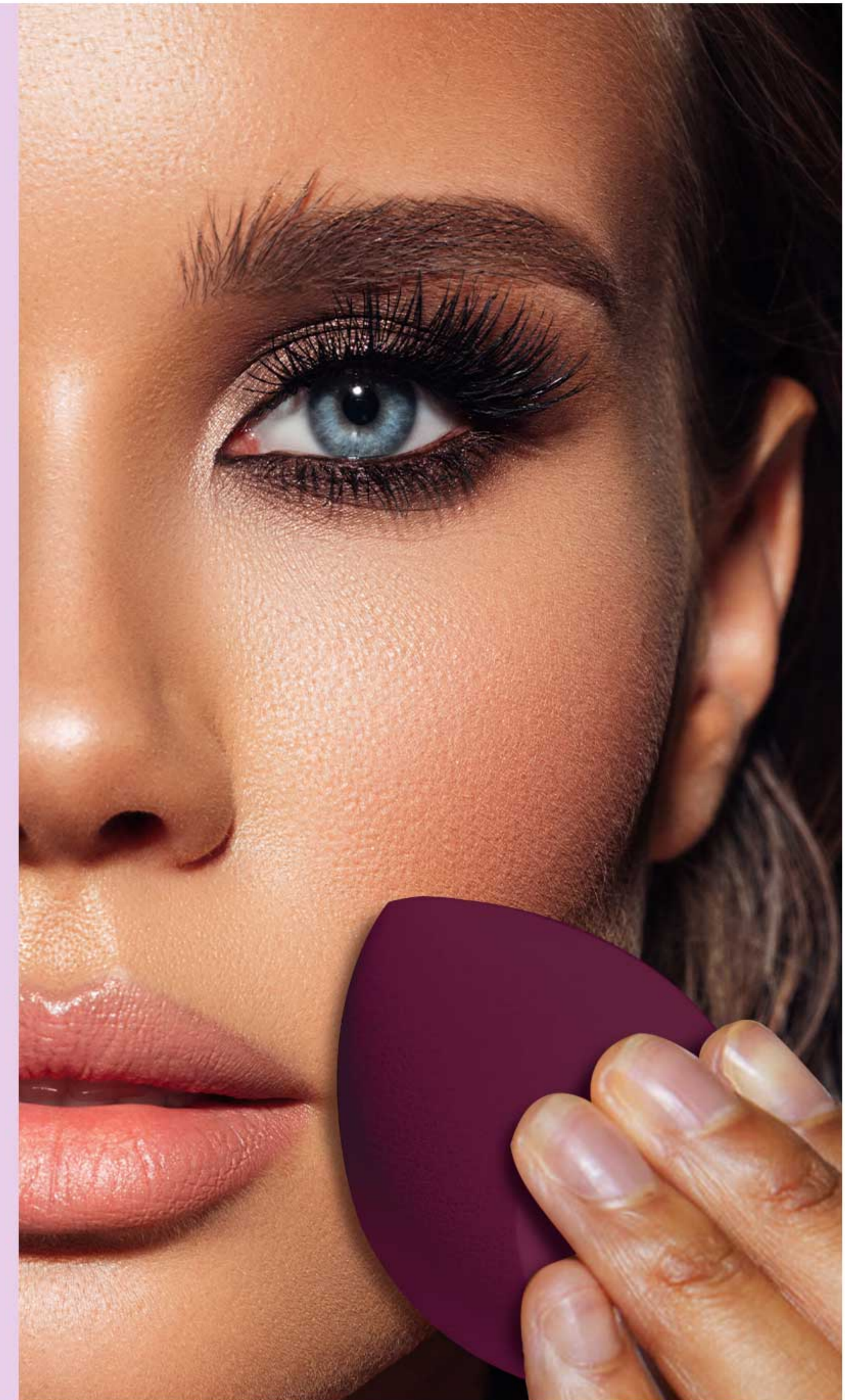
## Round Side

Bounce and blend for seamless, all-over coverage.

04

## Pointed tip-2

Spot-conceal blemishes for precise coverage





# # Tri Edge Beauty Sponge

Sku.No: 202210619  
Size: 50\*50\*20mm  
Material: PU

## 01

### Flat Edge

Ideal for blurring and softening the lower lash line and brow bone for a seamless finish.

## 02

### Small Edge

Perfect for precise contouring around the eyes, nose, and cheekbones, enhancing and defining facial features with ease.

## 03

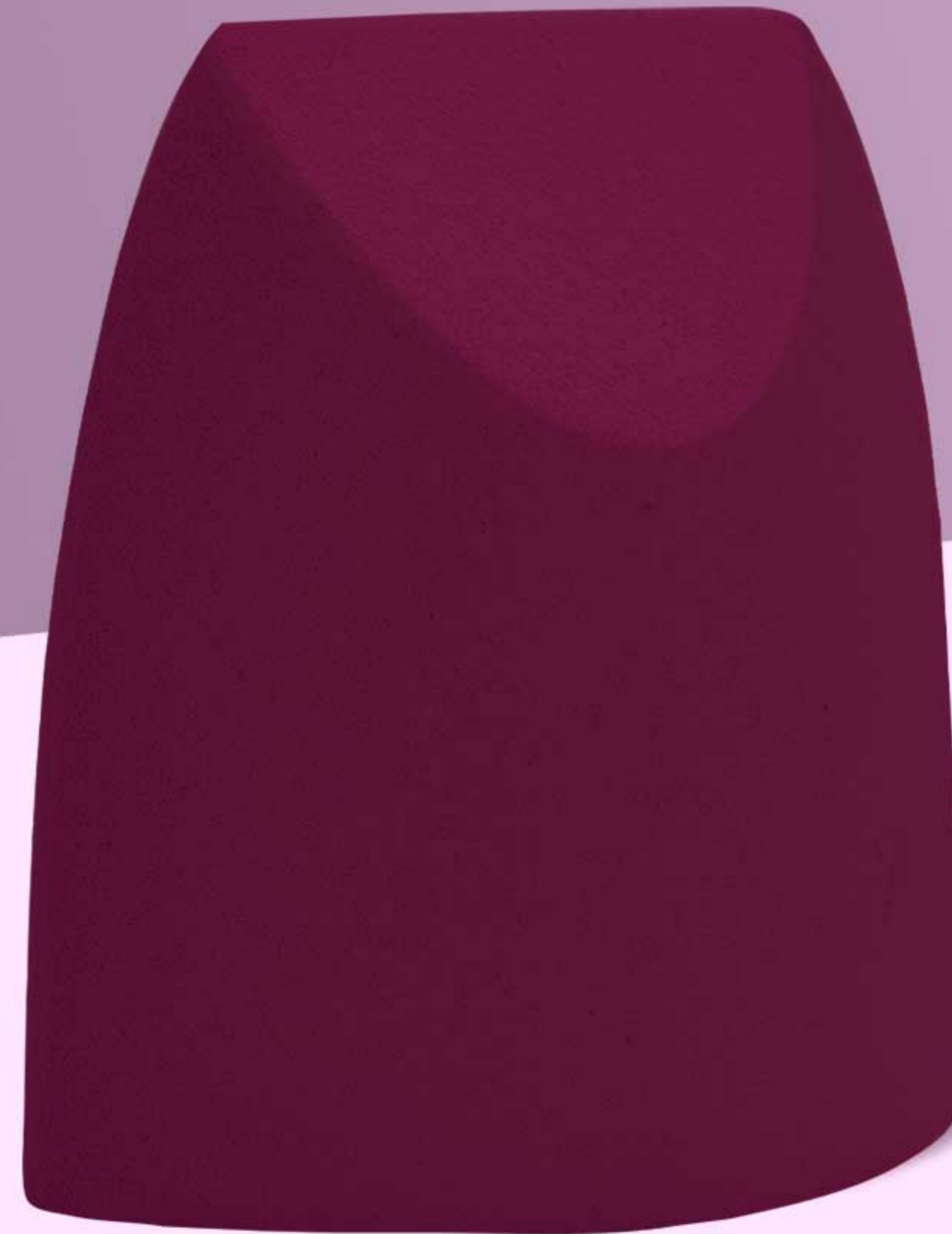
### Arc surface

Blend makeup for a finished look

## 04

### Large Edge

Apply foundation to the face with abouncing motion





# # Revolve Makeup Sponge

Sku.No: 202210623  
Size: 40\*60mm  
Material: PU



## 01 Pointed Tip

Conceal + perfect hard-to-reach areas or blemishes

## 02 Arc Surface

Blend makeup for a finished look

## 03 Flat Edge

Perfect for larger areas of the face such as forehead or cheeks.

## 04 Unique Shape

Multi-purpose foam works with all liquids, creams + powders



# # Tri Sculpt Irregular Sponge

Sku.No: 202210620  
Size: 62\*45\*30mm  
Material: PU



## 01

### Pointed Tip

Perfect for smaller areas such as under the eyes, around the nose and lips.

## 03

### Small Edge

Perfect for precise contouring around the eyes, nose, and cheekbones, enhancing and defining facial features with ease.

## 02

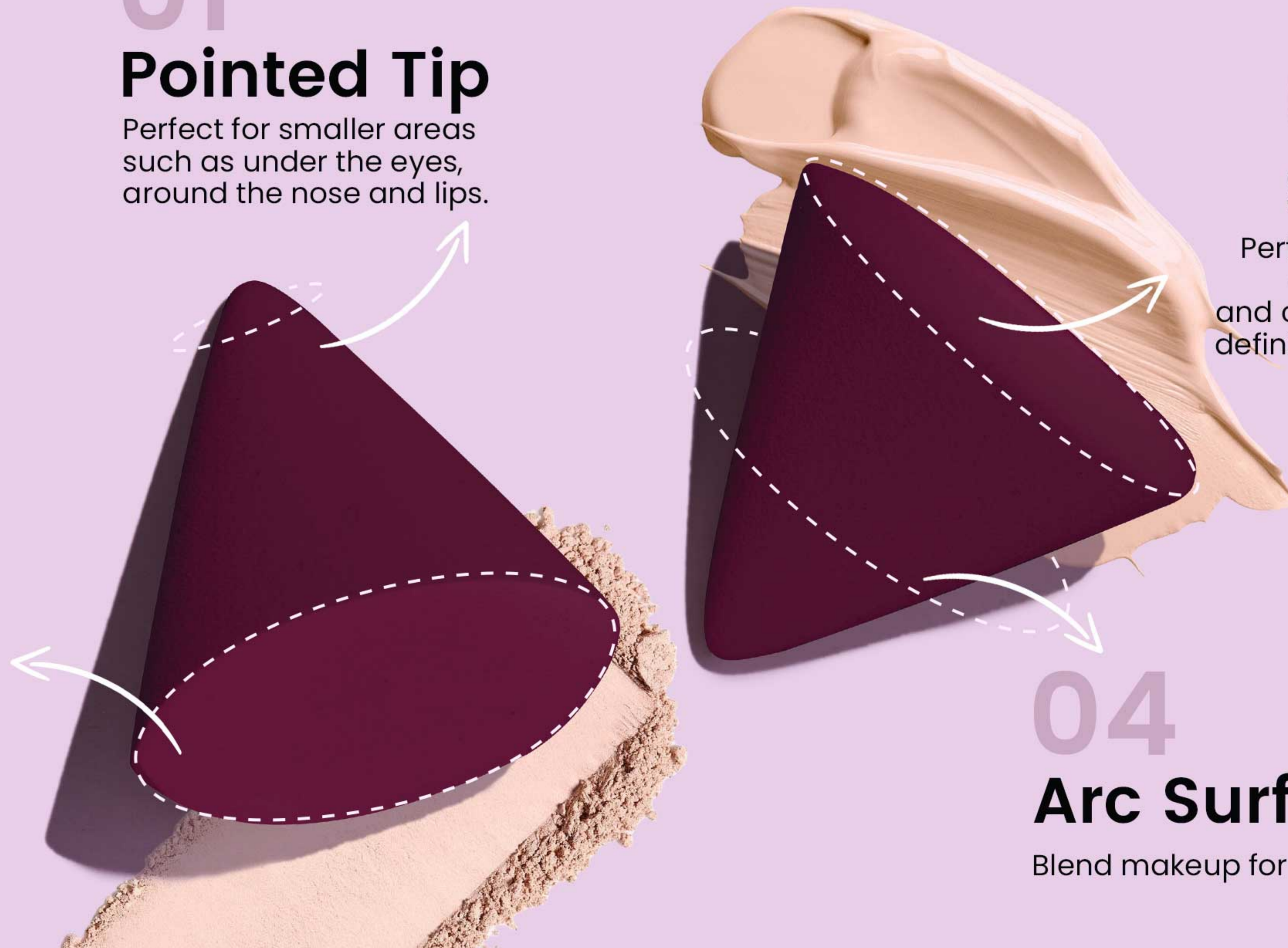
### Flat Edge

Perfect for larger areas of the facesuch as forehead or cheeks.

## 04

### Arc Surface

Blend makeup for a finished look





# # Gyro Shape Beauty Sponge

01

## All-in-One Versatility

Ideal for blending foundations, creams, and liquids with professional-level precision.

02

## Fast & Flawless

Effortlessly achieve a smooth, streak-free finish in seconds.

03

## Wet or Dry Perfection

Designed for dual functionality, delivering consistent results in both wet and dry applications.



Sku.No: 202210624  
Size: 40\*60mm  
Material: PU



# # Sharp Edge Beauty Sponge

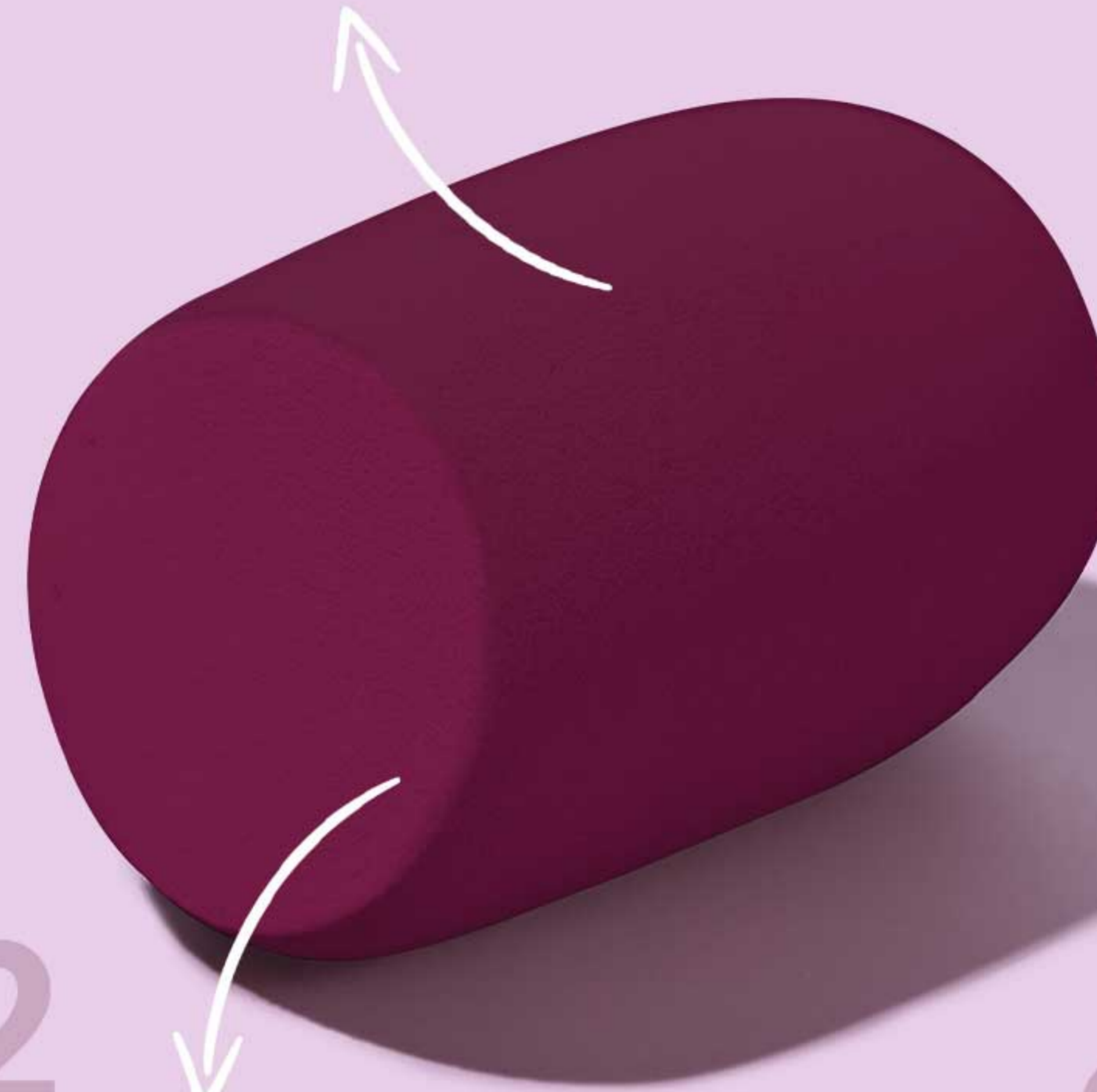
Sku.No: 202210621  
Size: 40\*60mm  
Material: PU



01

## Round Side

Bounce and blend for seamless, all-over coverage.



02

## Flat Edge

Perfect for larger areas of the face such as forehead or cheeks.



03

## Easy Application

works with all liquid, cream,  
+ powder formulations



# # Iron Sculpt Sponge

Sku.No: 202210618  
Size: 45\*40\*18mm  
Material: PU



## 01

### Base

Blend liquid +  
cream makeup



## 02

### Define

Contour +  
blend out blush



## 03

### Under Eyes

Set makeup





# # Creative Curve Sponge

Sku.No: 202210640  
Size: 40\*60mm  
Material: PU



## 01 Pointed Tip

Perfect for smaller areas such as under the eyes, around the nose and lips.

## 02 Arc Surface

Blend makeup for a finished look

## 03 Flat Edge

Perfect for larger areas of the facesuch as forehead or cheeks.

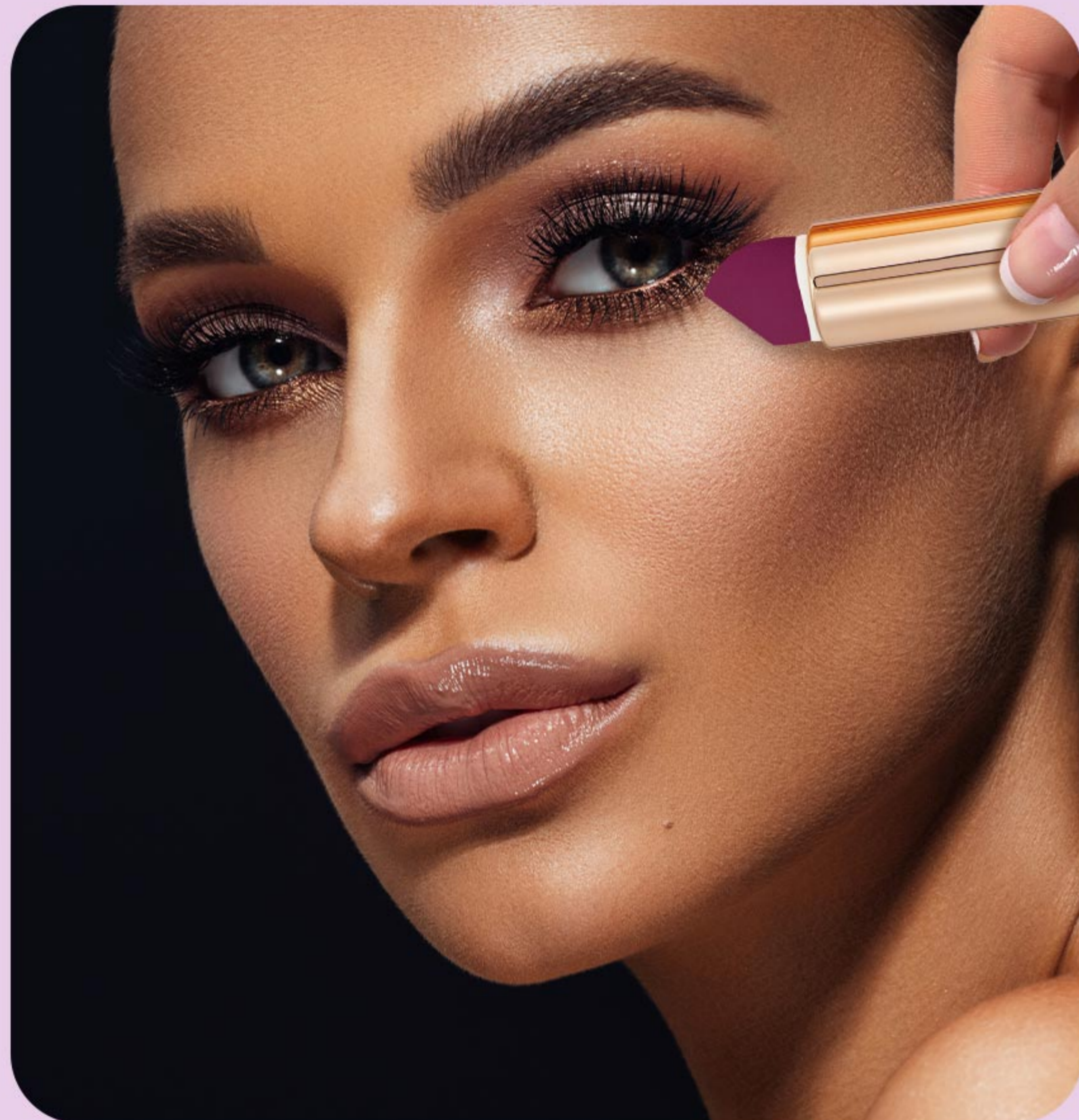


# # Applicators

## Pal'm Not Lipstick

Cosmetic Applicator

Perfect for on-the-go touch-ups



patented



01  
**Sponge  
Applicator**

Tip pointed precision  
blending on

02  
**Compact  
Mirror**

Touch up your look