

Precision Nail Extension Form

ST
ST FUTURE

- **Special Nail Tips:**

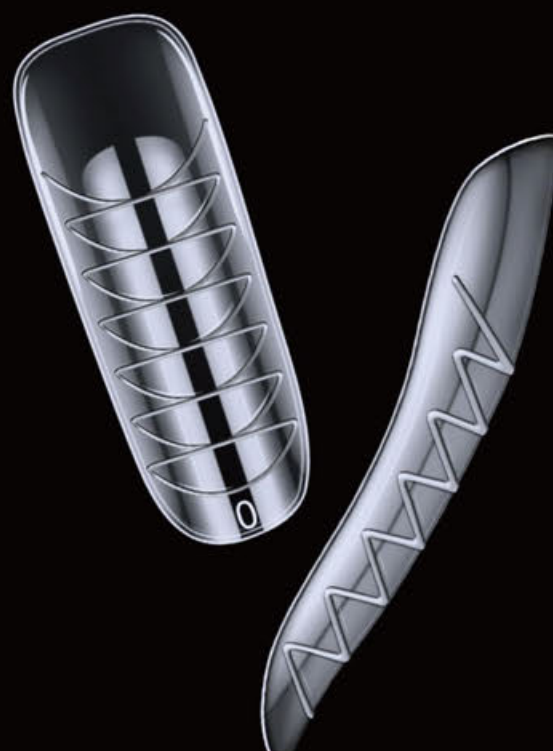
Use with extension gel and curing lamp for lengthening and shaping; multiple nail shapes with guide lines.

- **Multi-Functional Extension Gel:**

Combines extension, shaping, and strengthening in one.

- **Reusable and Cost-Effective:**

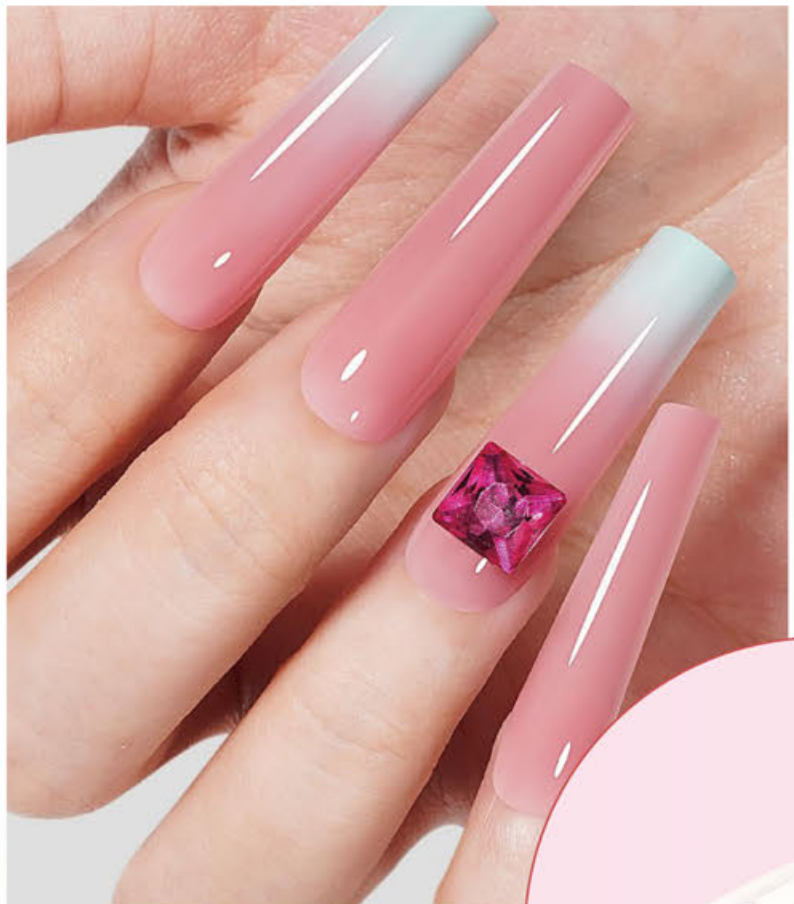
High value for frequent nail enthusiasts.



Quick Nail Extension

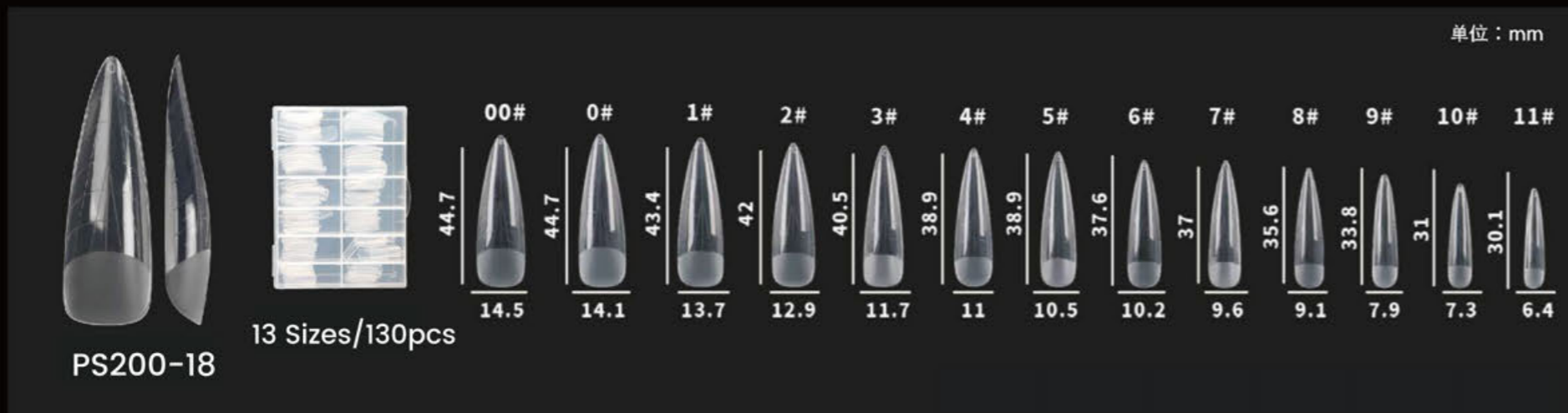
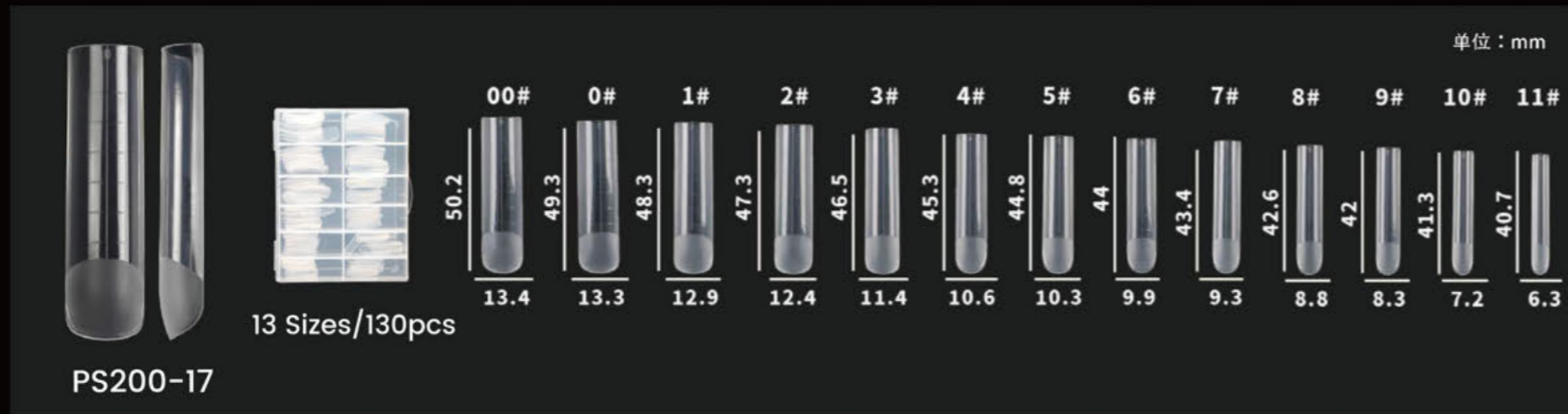
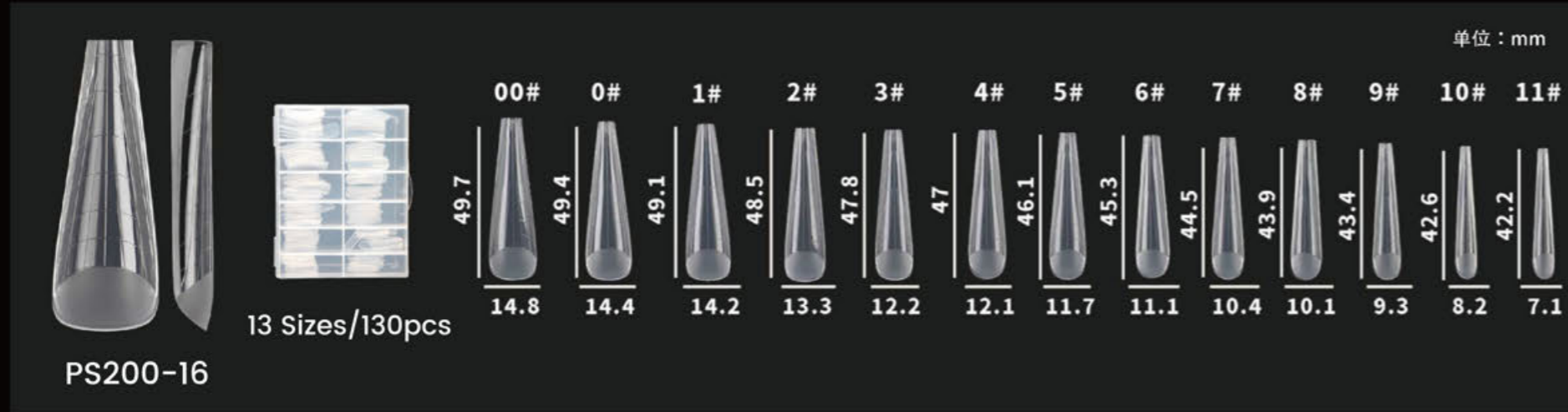
100% 
Fit nail surface

0% 
Harm for nails



Product options

• SKU.NO: 101141525 • Material:PP



PS200-7 12 Sizes/120pcs

Size	0#	1#	2#	3#	4#	5#	6#	7#	8#	9#	10#	11#
Length (mm)	33.50	32.83	32.03	31.17	30.60	30.15	29.63	29.47	29.15	28.25	27.52	26.55
Width (mm)	12.42	11.68	10.62	9.92	9.46	8.88	8.77	8.07	7.84	7.01	6.24	5.90

PS200-6 12 Sizes/120pcs

Size	0#	1#	2#	3#	4#	5#	6#	7#	8#	9#	10#	11#
Length (mm)	44.45	43.19	42.06	41.69	41.40	40.10	39.48	38.54	37.14	37.24	36.93	36.14
Width (mm)	12.22	12.16	11.06	10.51	9.81	9.26	8.95	8.65	8.34	8.17	7.38	6.94

PS200-7-B 14 Sizes/140pcs

Size	0#	1#	2#	3#	4#	5#	6#	7#	8#	9#	10#	11#	12#	13#
Length (mm)	33.67	33.17	32.43	31.63	30.79	30.25	29.62	29.26	29.18	28.67	28	27	26.22	25
Width (mm)	14.60	12.2	11.30	10.45	9.69	9.38	8.65	8.50	8.05	7.63	6.94	6.30	5.7	4.7

PS200-12 12 Sizes/130pcs

Size	0#	1#	2#	3#	4#	5#	6#	7#	8#	9#	10#	11#
Length (mm)	42.9	42.36	42.14	41.17	40.70	39.81	39	38.22	37.51	37	36.39	35.76
Width (mm)	15.8	15.1	14.30	13	12.65	11.9	11.06	10.46	10.4	10	9.7	8.73

PS200-5 12 Sizes/120pcs

Size	0#	1#	2#	3#	4#	5#	6#	7#	8#	9#	10#	11#
Length (mm)	28.5	27.5	26.8	25.4	24	23	23	22.5	22	21	20.4	19.6
Width (mm)	12.8	12.6	11.6	10.6	9.7	9.3	8.8	8.5	8.3	7.8	7.6	6.5

PS200-13 12 Sizes/120pcs

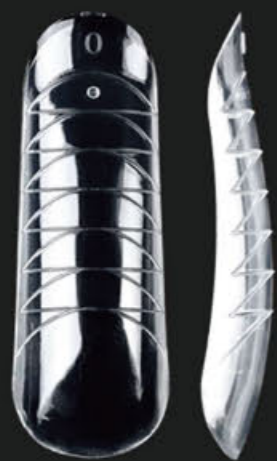
Size	0#	1#	2#	3#	4#	5#	6#	7#	8#	9#	10#	11#
Length (mm)	41.5	41.5	41.5	41.5	41.5	41.5	41.5	41.5	41.5	41.5	41.5	41.5
Width (mm)	15	13.81	13.6	13.07	11.77	10.93	10.53	10.40	10	9.30	8.30	7.71

PS200-14 14 Sizes/140pcs

Size	0#	1#	2#	3#	4#	5#	6#	7#	8#	9#	10#	11#	12#	13#
Length (mm)	32.6	32.2	31.4	30.4	30	28.9	28.6	28.1	27.9	27.4	27	26.7	25.1	24.7
Width (mm)	13.5	13	12.5	11.7	11.4	10.5	10.2	9.5	9.5	8.9	8.5	7.6	7.4	6.8

PS200-9 12 Sizes/120pcs

Size	0#	1#	2#	3#	4#	5#	6#	7#	8#	9#	10#	11#
Length (mm)	37.54	37.54	37.54	37.54	37.54	37.54	37.54	37.54	37.54	37.54	37.54	37.54
Width (mm)	14.11	13.64	13.19	11.78	11	10.78	10.45	10	9.3	8.40	7.75	7.65



PS200-4



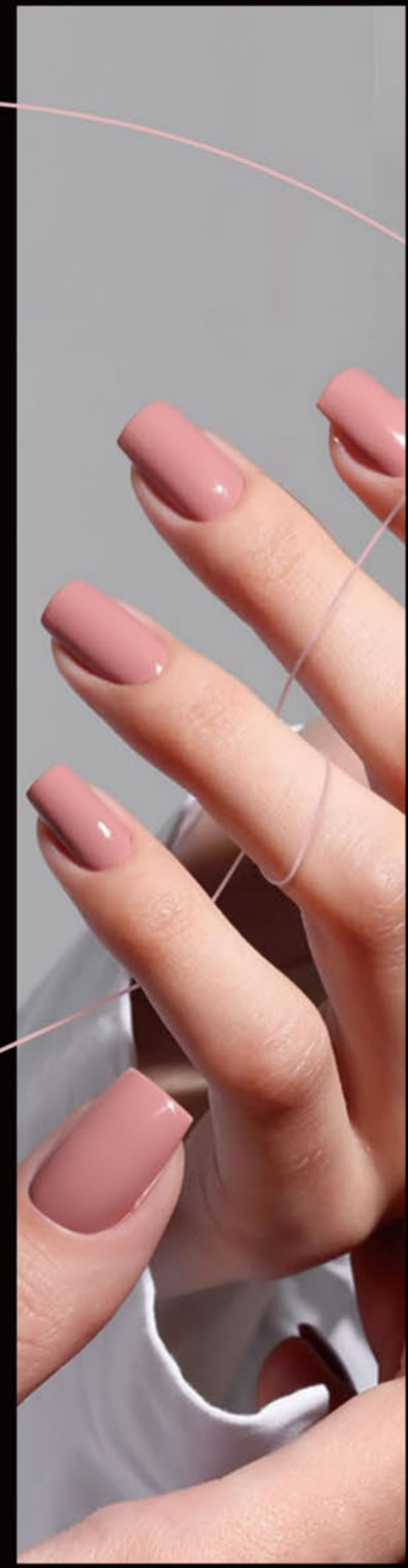
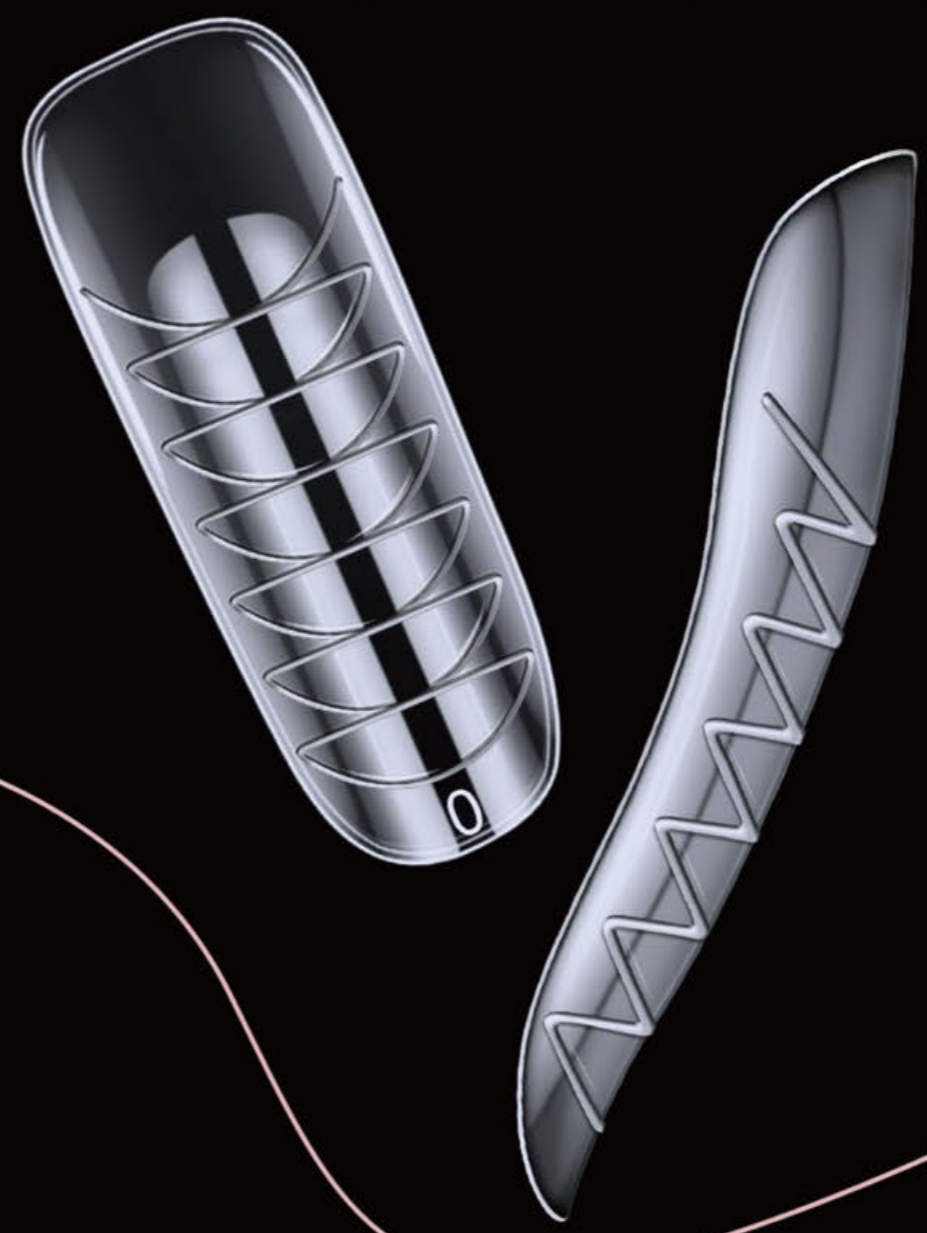
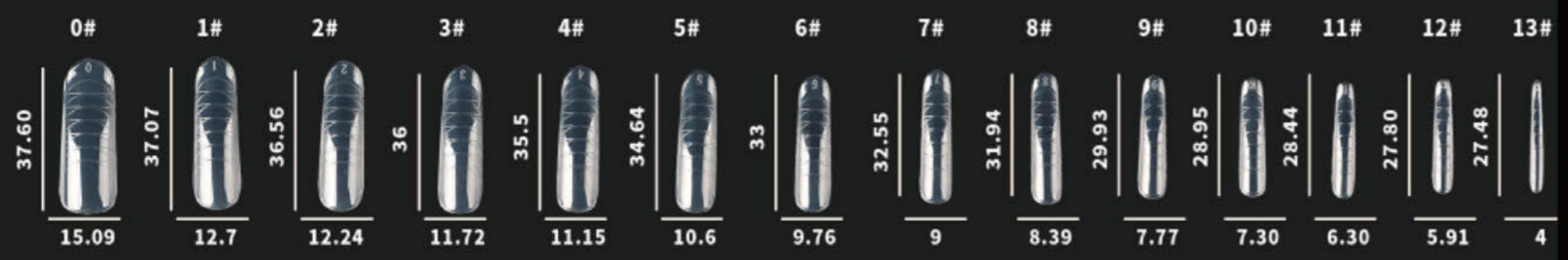
12 Sizes/120pcs



PS200-4-B



14 Sizes/140pcs





PS200-1-A



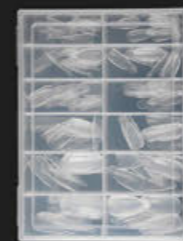
PS200-1-B



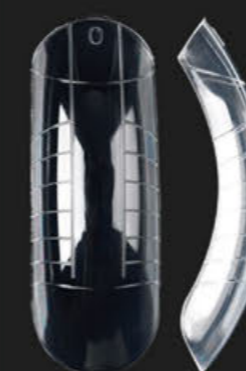
12 Sizes/120pcs



PS200-3



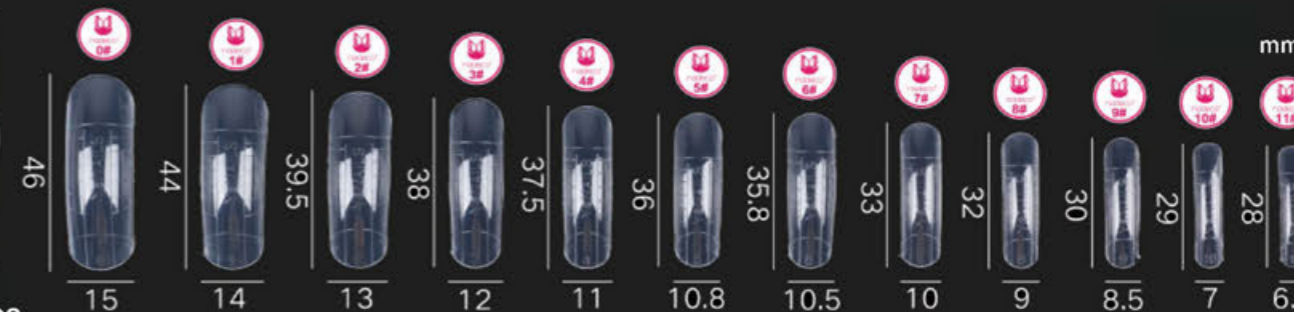
14 Sizes/140pcs



PS200-2



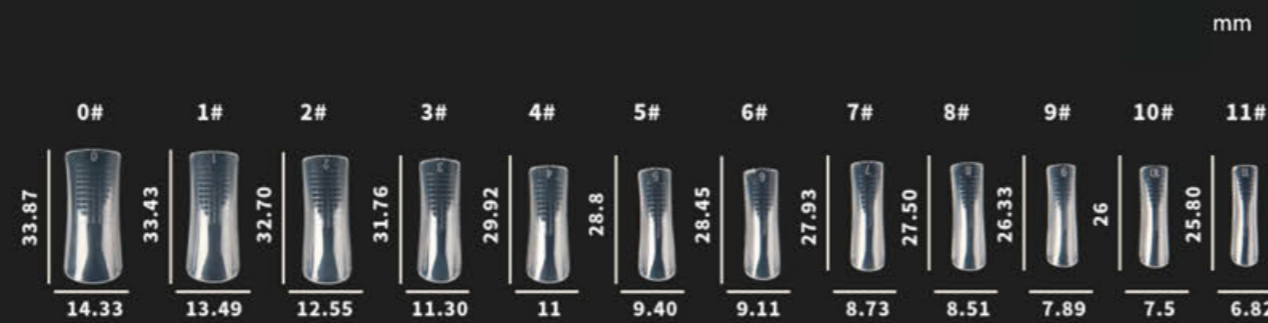
12 Sizes/120pcs



PS200-8



12 Sizes/120pcs



Poly Gel Quick Building Nail Kit



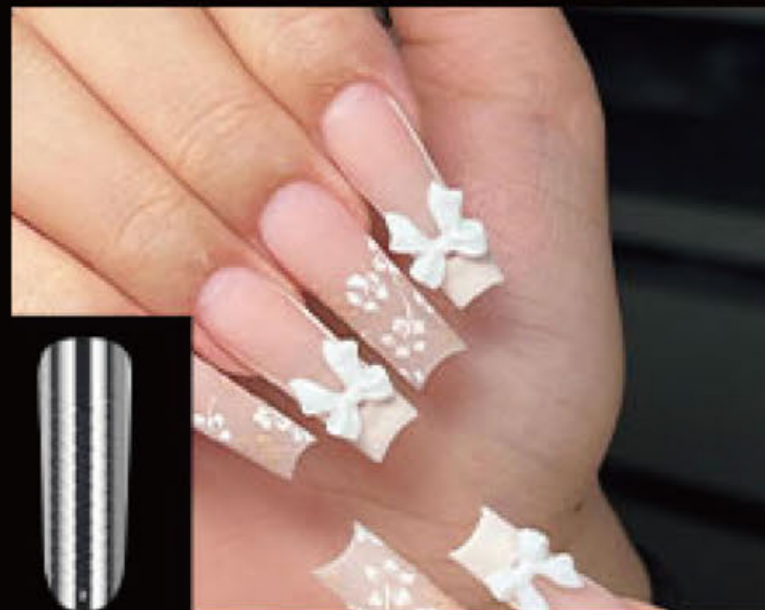
• Set A •



• Set B •



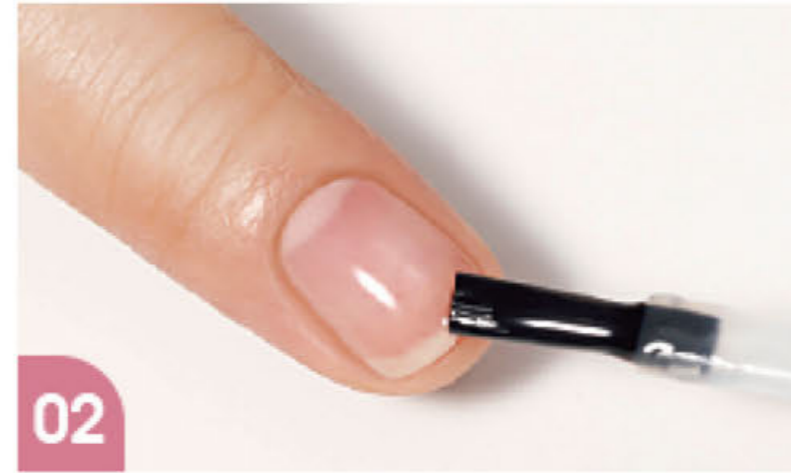
• Set C •



How to use



01 Trim, file, buff, and clean nails.



02 Apply the base coat and cure under the UV/LED lamp 60s-120s.



03 Select the suitable size of the dual form for each nail. The forms should be a little bigger than the actual nails.



04 Squeeze out 0.2g-0.3g (like Soya beans) poly nail gel on the dual form.



06 Stick nail form to natural nail gently, and hold in place with clip. Dip the brush in gel solution and remove any excess gel.



07 Both sides of the nail require curing about 90s-120s to dry completely.



08 Remove the dual form, then use the grit file to adjust the shape and use the grit buffer to buff the nail surface.



09 Apply the top coat and cure under the UV/LED lamp for about 60s-120s. Finish.