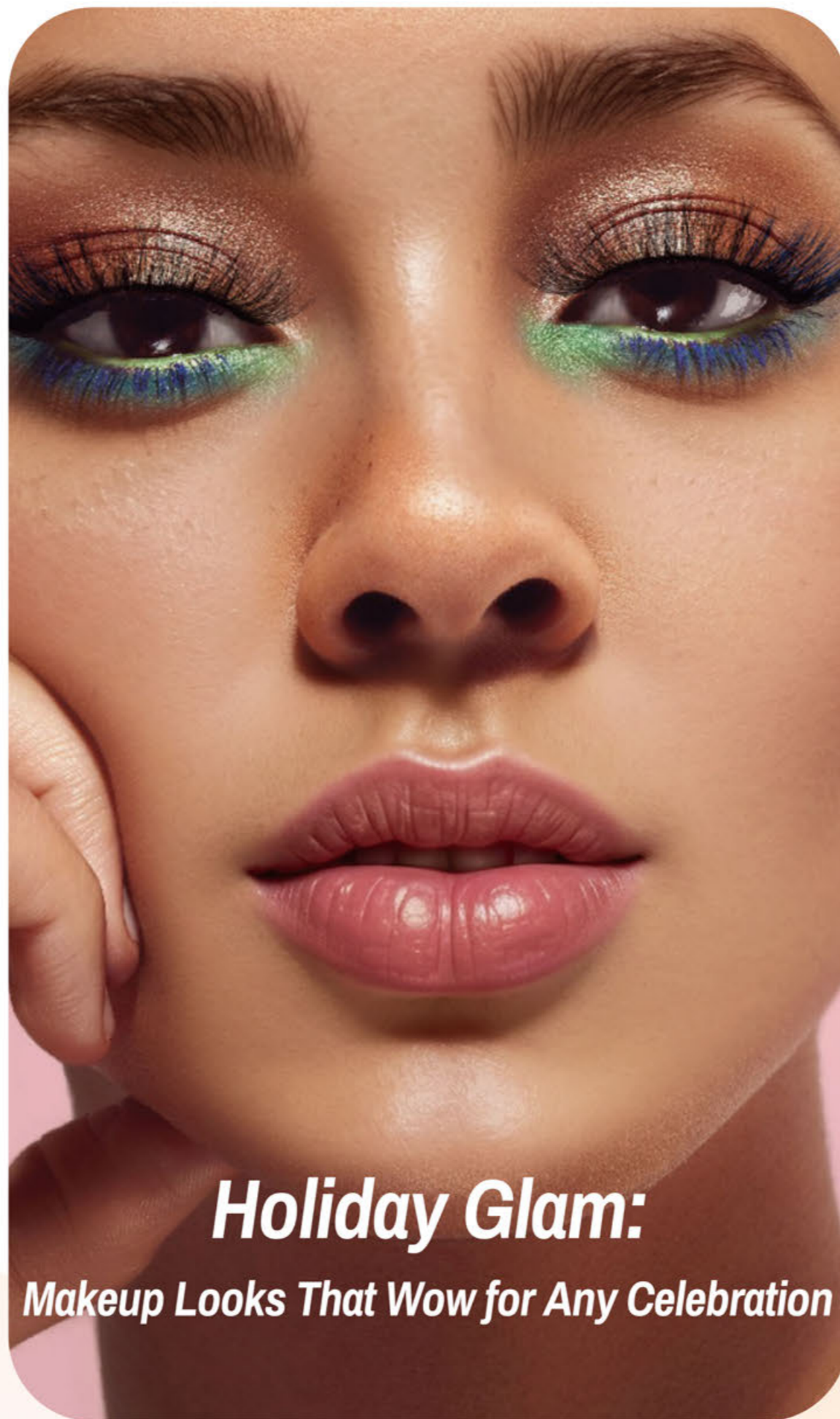




Mixed Color False Lashes

- **Versatile for Various Occasions:**
Ideal for stages, parties, and festivals with its vibrant yet tasteful design.
- **Perfect for Any Makeup Look:**
Mixes colors to enhance a range of looks and settings, from casual to festive.
- **Natural and Seamless:**
Provides a flawless, invisible look that blends effortlessly.



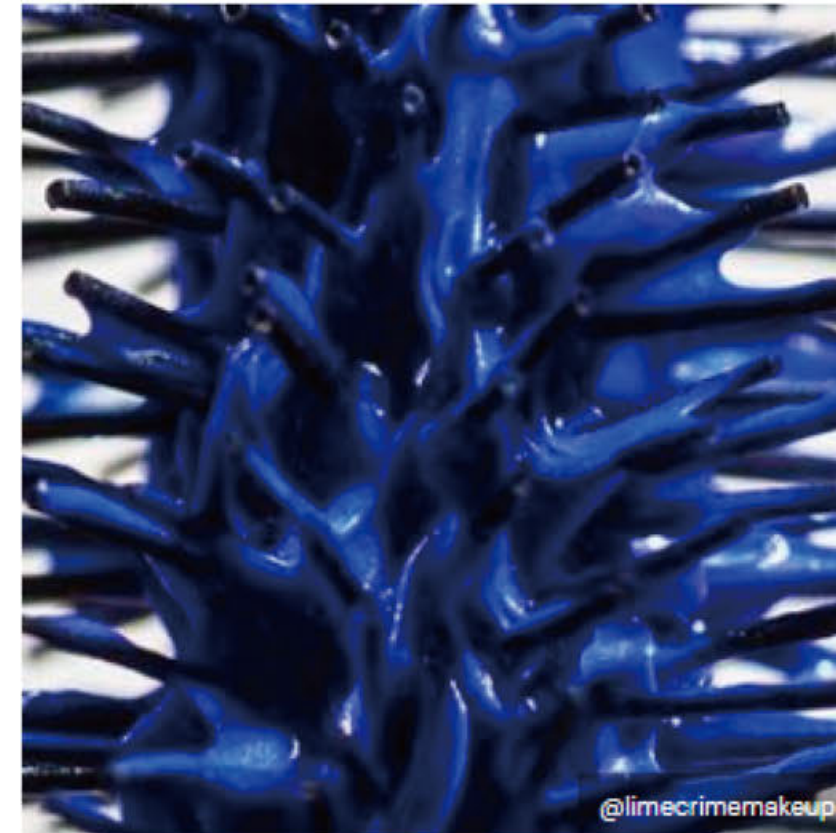
Holiday Glam:
Makeup Looks That Wow for Any Celebration



Subtle Sophistication:
Mastering the Art of Daily Makeup

CMF Forecast S/S 25: Eyes & Cheeks

Encourage unexpected applications with creative brights



<https://www.wgsn.com/beauty/article/643d0962a87e8f05da775147?lang=en#page4>

CMF Forecast A/W 25/26: Eyes & Cheeks

Enhance vintage blues with icy lemon tones

Chilly blues and sunshine yellows find harmony in this refreshing eye-focused palette.

Key words: nostalgic, fresh, icy, cool-toned, dreamy

Product applications: eyeshadow, gel eyeliner, sustainable glitter pots, eye gloss

Key finishes: metallic, glitter, shimmer, matte



<https://www.wgsn.com/beauty/article/65242a6cc-e88e0e28f5d07f0?lang=cs#page5>

New In—Multicolored Individual Flares



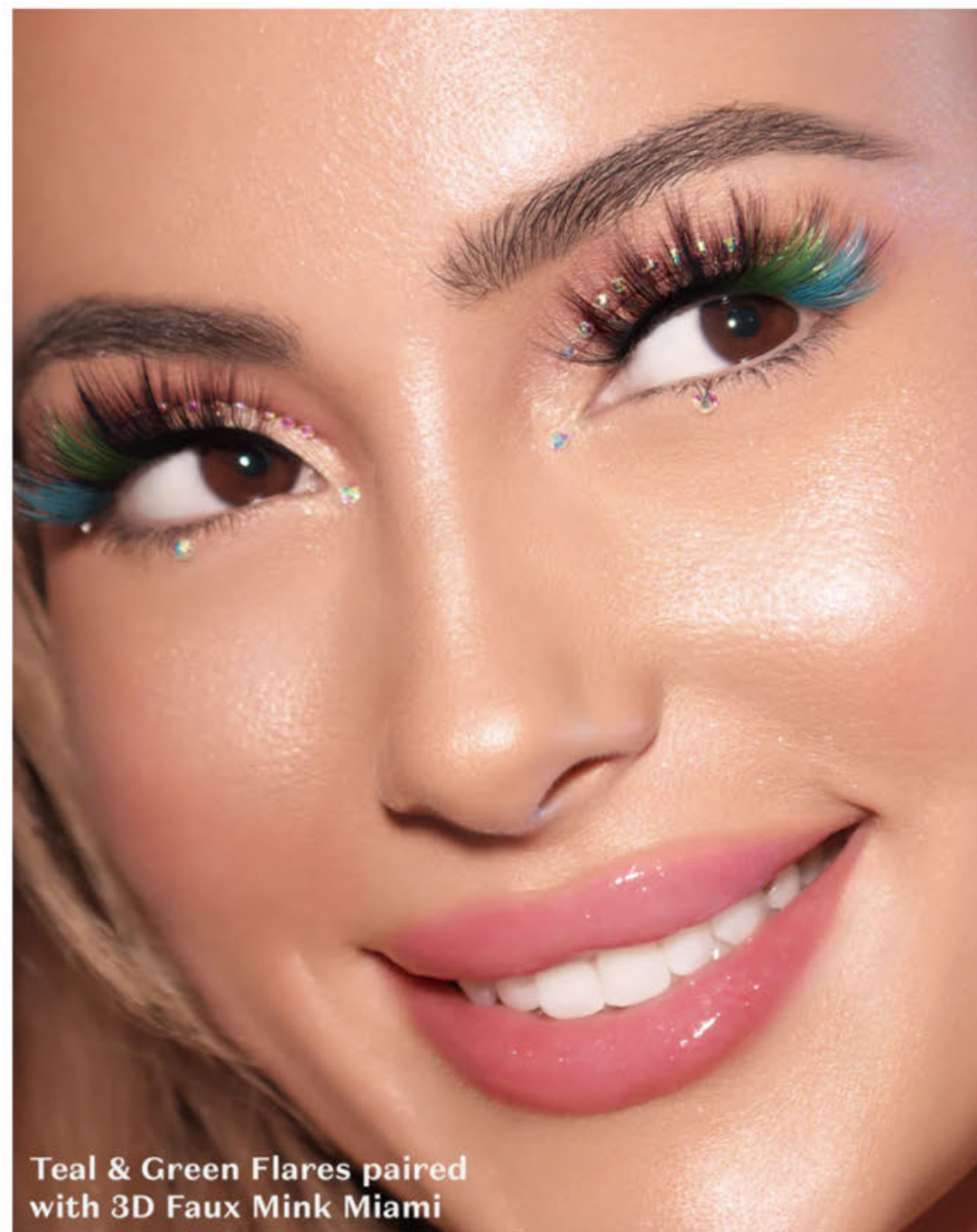
Creative by applying them in any pattern—above your natural lashes

Mix natural lashes , match customized look.

These lashes are ideal for making a statement at **music festivals, football games, parades or everyday self-expression.**



Blue & Teal Flares paired with Sheer Invisible Band Sultry



Teal & Green Flares paired with 3D Faux Mink Miami

Perfect for all eye shapes

Reusable up to 3 wears with proper care
32 clusters, 14mm each

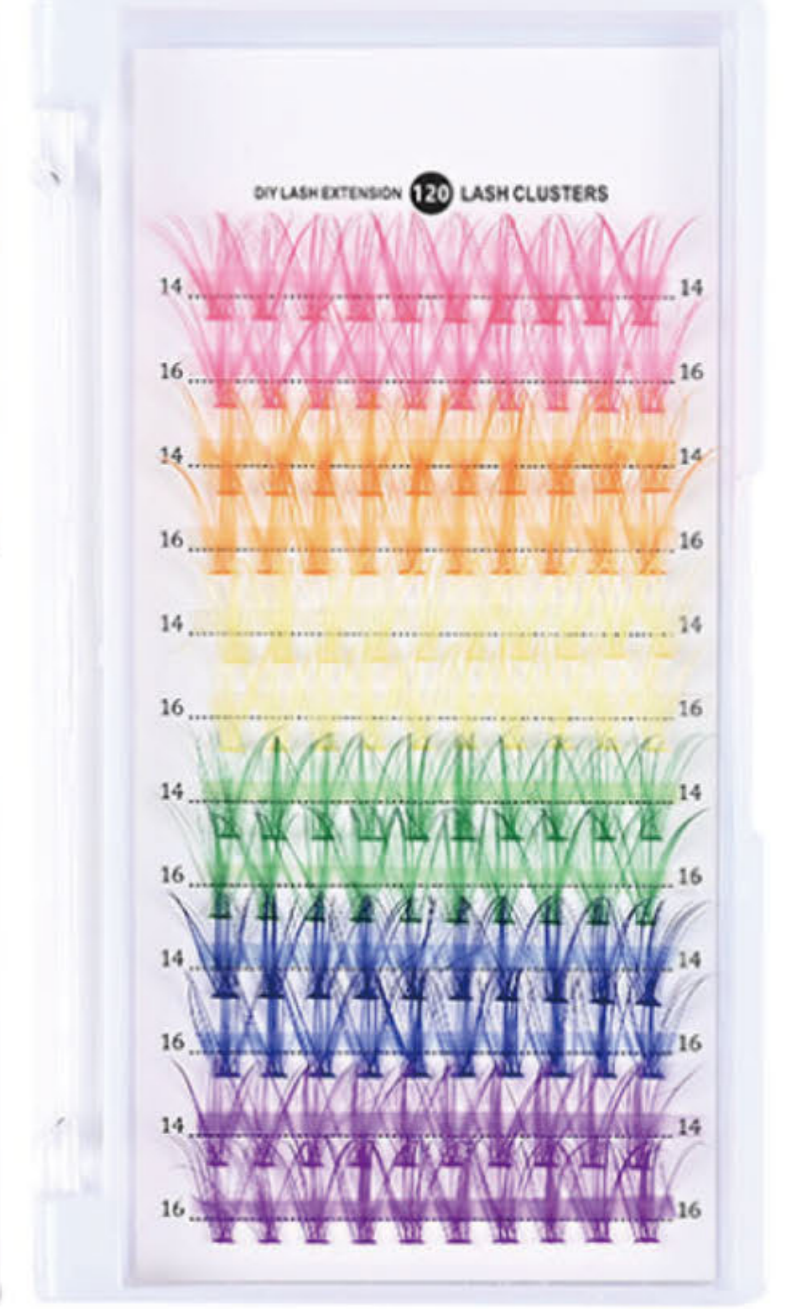
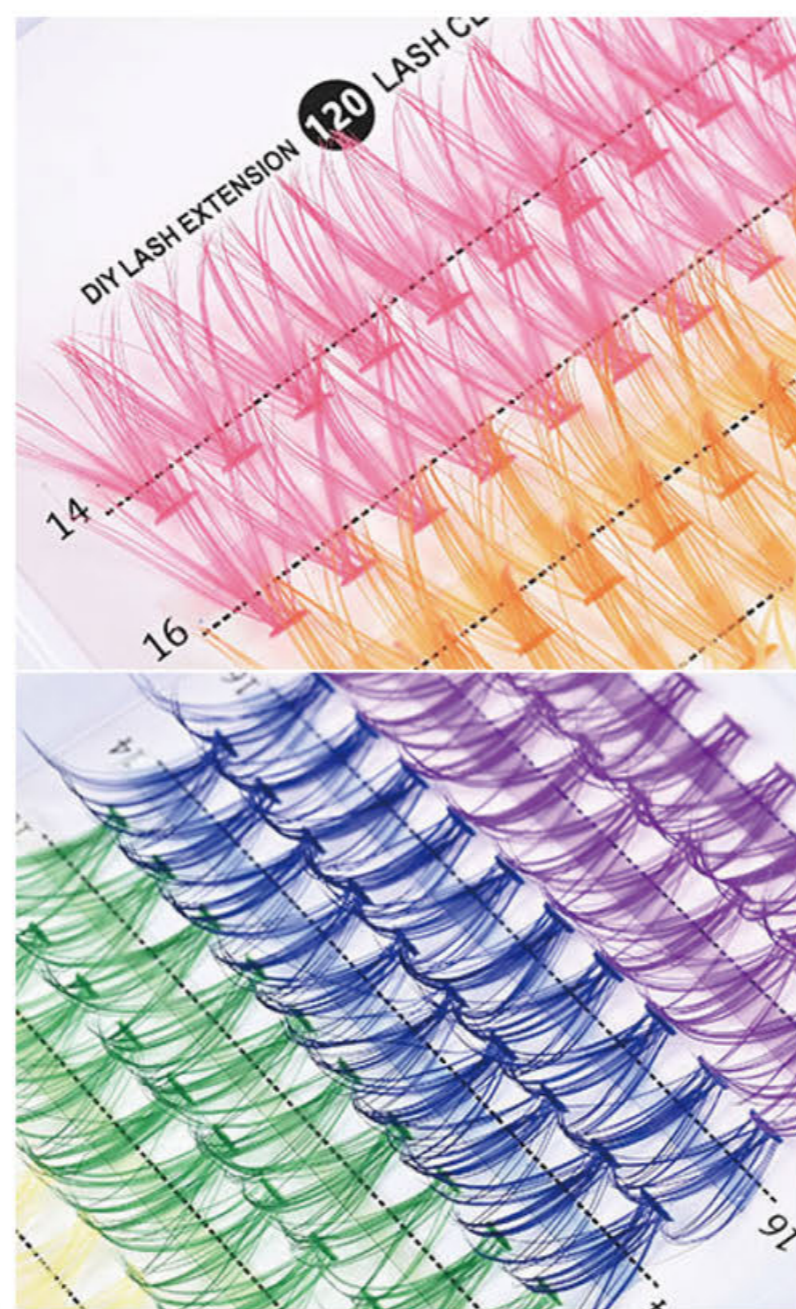


\$14

<https://www.lillylashes.com/collections/new-arrivals/>

Multicolored Individual

Mix natural lashes , match customized look. ideal for making a statement at music festivals, football games, party,parades or everyday self-expression.



Mixed Color Party Lash

SKU.NO.: 20233001952

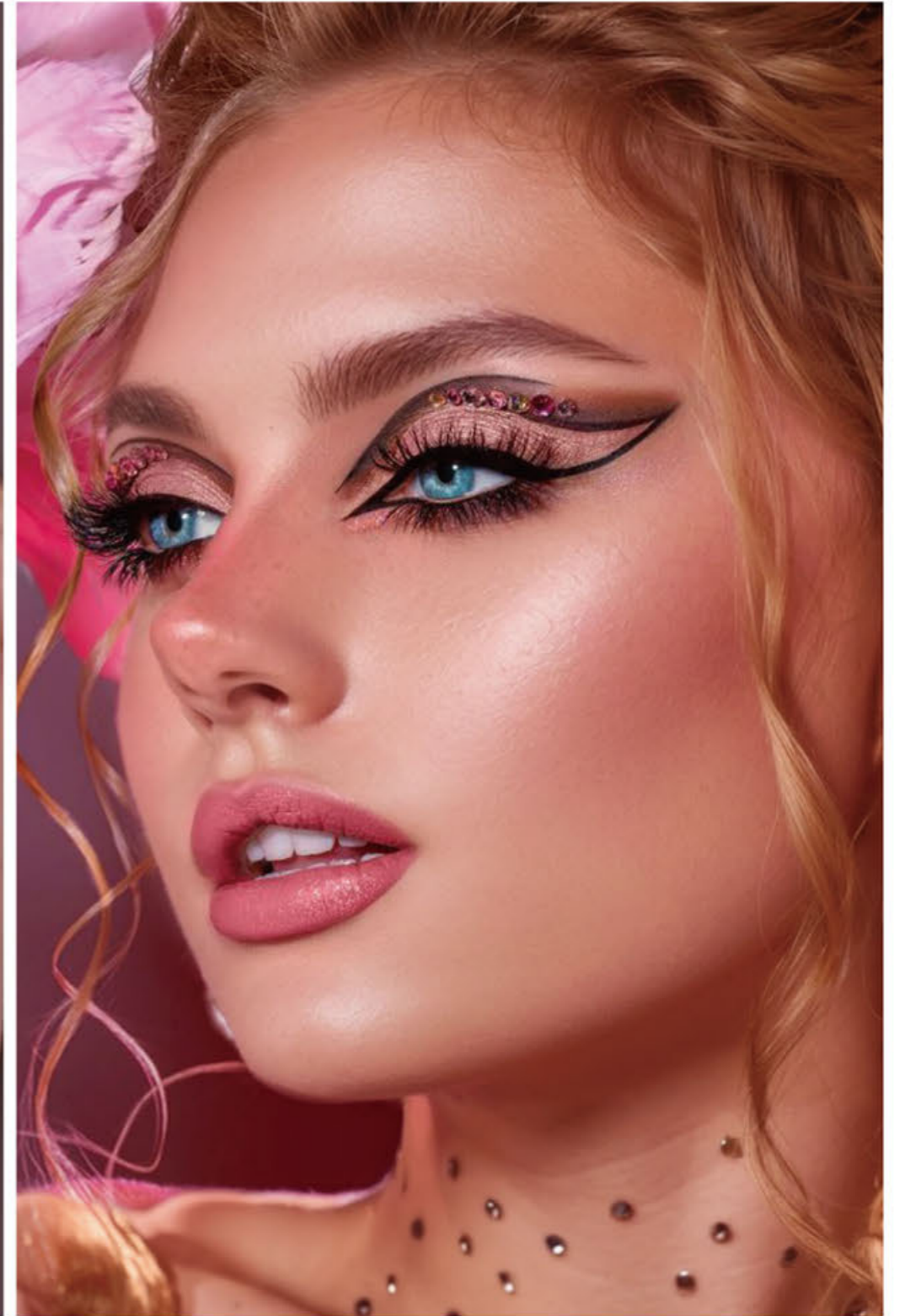
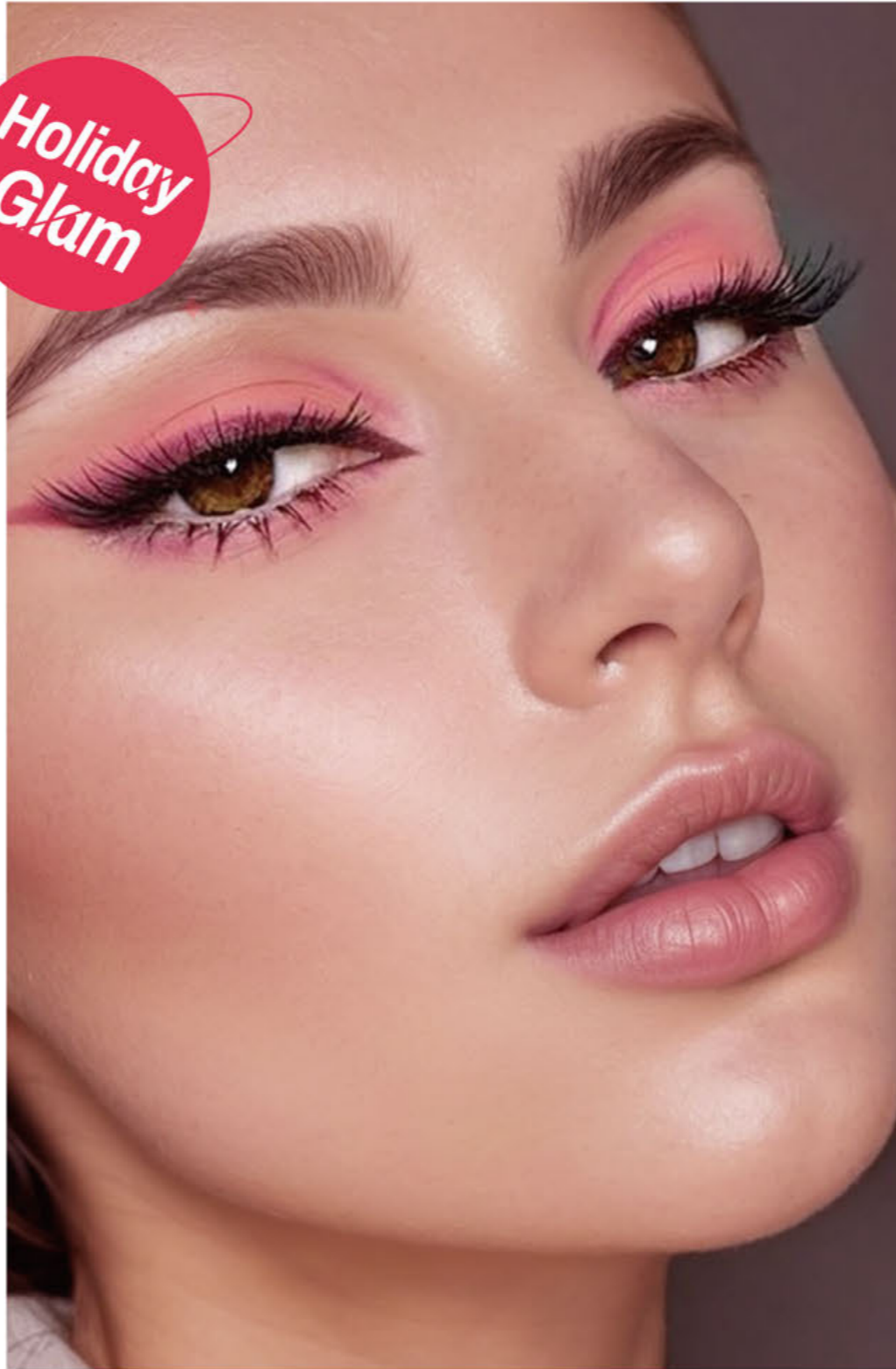


Mixed Color Party Lash

SKU.NO.: 20233001952



Holiday
Glam



Reintroduce the smokey brown eye

The brown smokey eye will return in full force as this season leans into warm caramel tones.

Key words: classic, sultry, desert, rich, caramel, mysterious

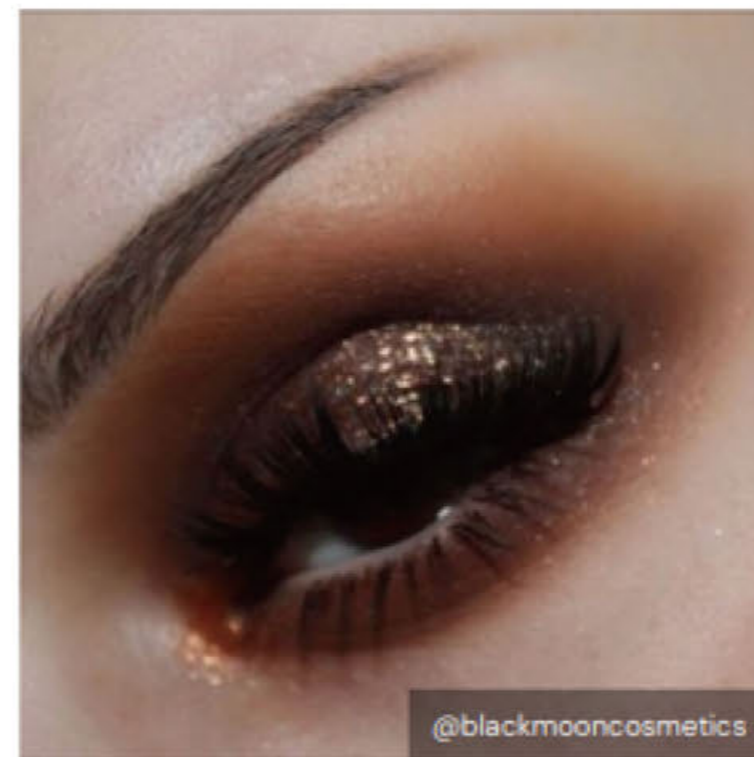
Product applications: eyeshadow, eyeliner, blush, bronzer, mascara

Key finishes: matte, satin, metallic, glitter, shimmer

Test/invest/protect: protect. This colour story is maturing and analysis suggests it is a core or perennial trend with established consumer buy-in and demand.



WGSN



New In—Everyday Brown Blended

- ✓ The unique blend of black and brown hairs create a natural glam
- ✓ Designed with a **60/40 blend of black and brown fibers**
- ✓ **Complement various hair colors and skin tones**, blending effortlessly with your natural lashes.



FEATURING A
60/40 BLEND OF
black & brown
LASH FIBERS



New In—Everyday Brown Blended



Natural Mix Color Lash

SKU.NO.: 20233001487

Perfectly Match With All Hair And Skin Tones



Cruelty-free, safe
comfortable & soft



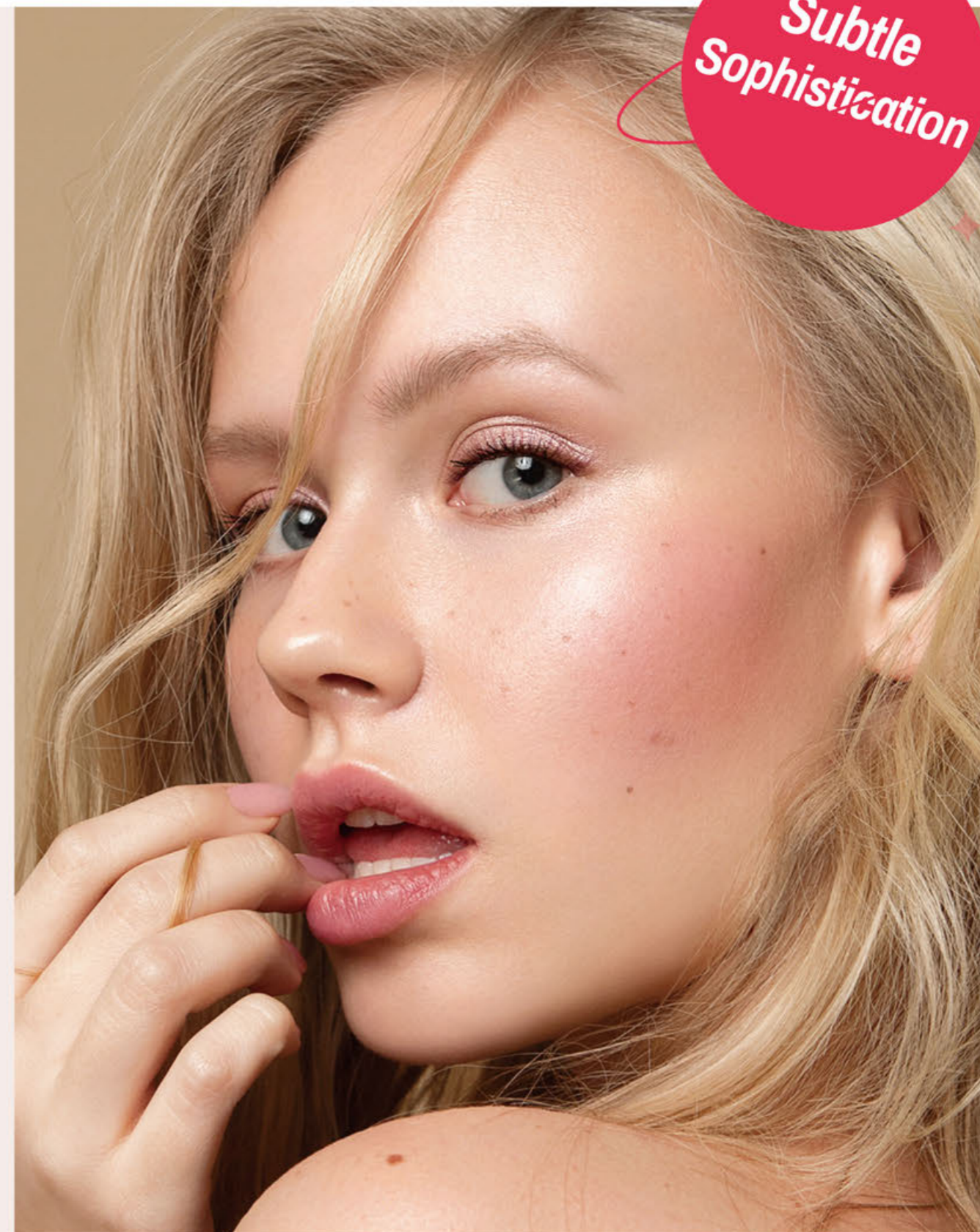
Suitable for
various occasions



The unique blend of black and
brown lashes works well with
all hair and skin tones.



Subtle
Sophistication



Natural Mix Color Lash

SKU.NO.: 20233001950

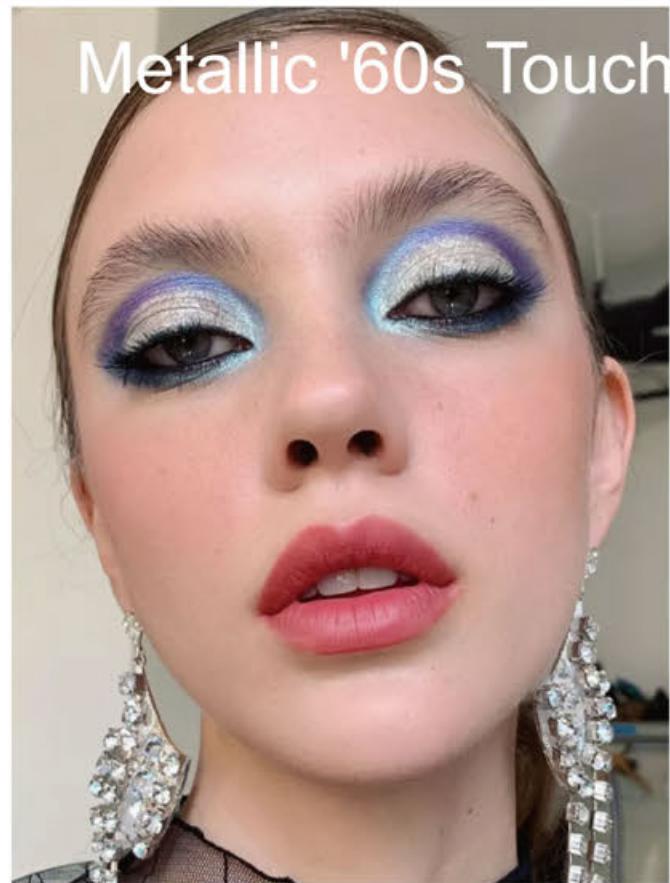


Subtle
Sophistication

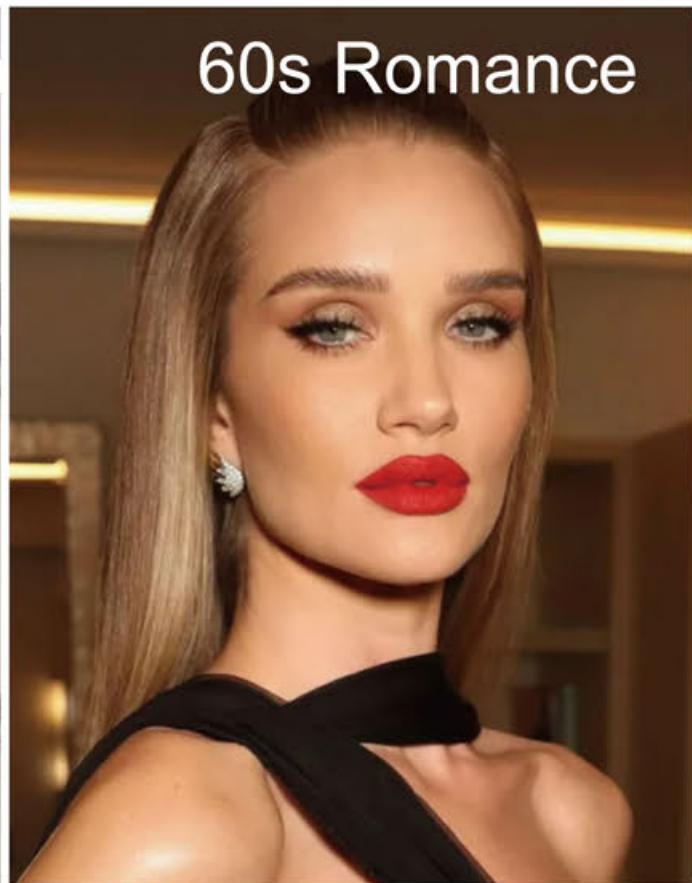


25 1960s-Inspired Makeup Looks That Have That Timeless Feel You Love

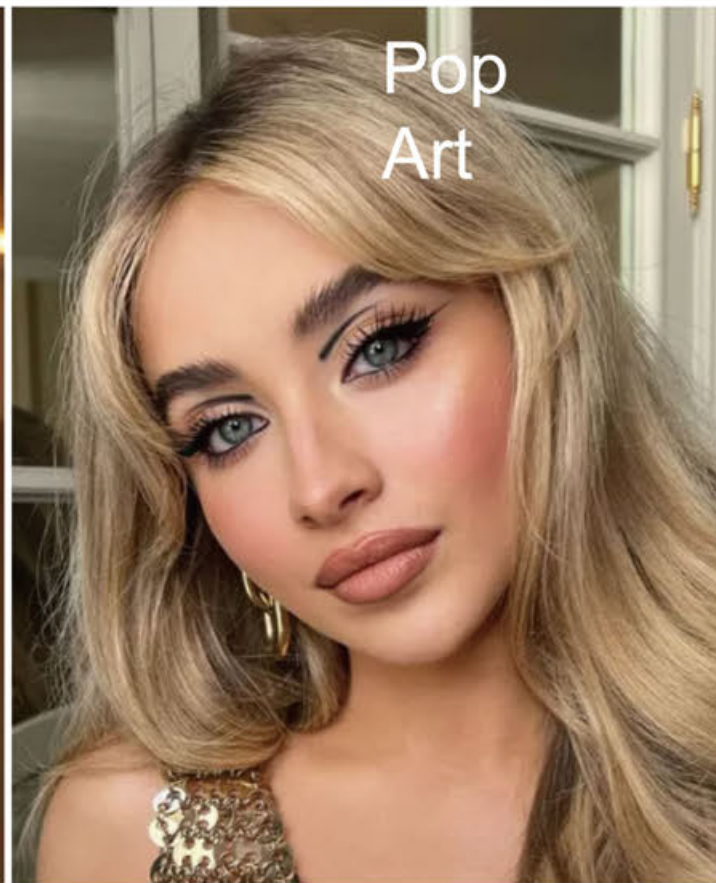
BYRDIE



Metallic '60s Touch



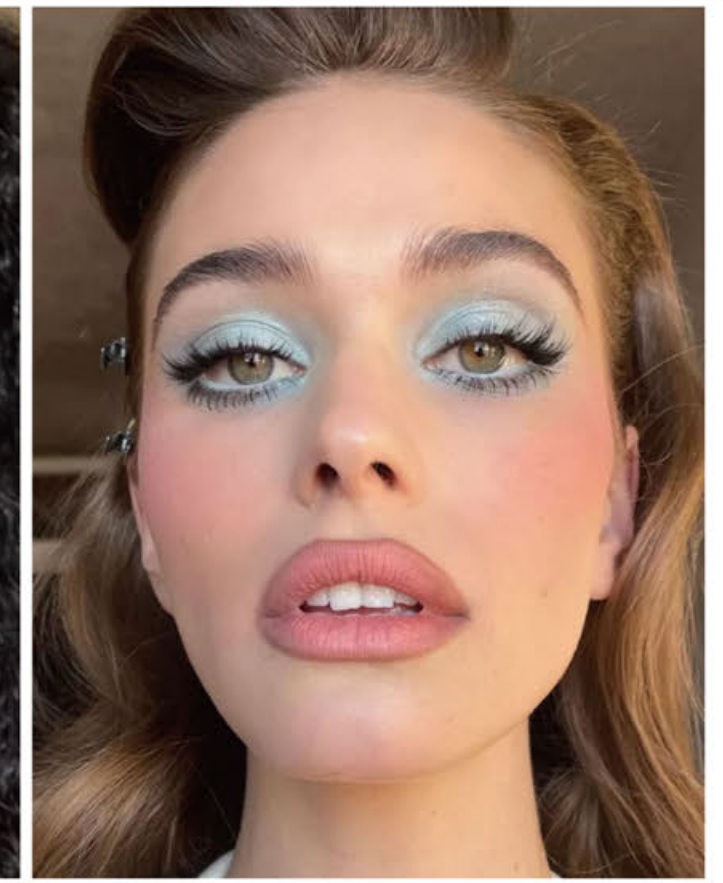
60s Romance



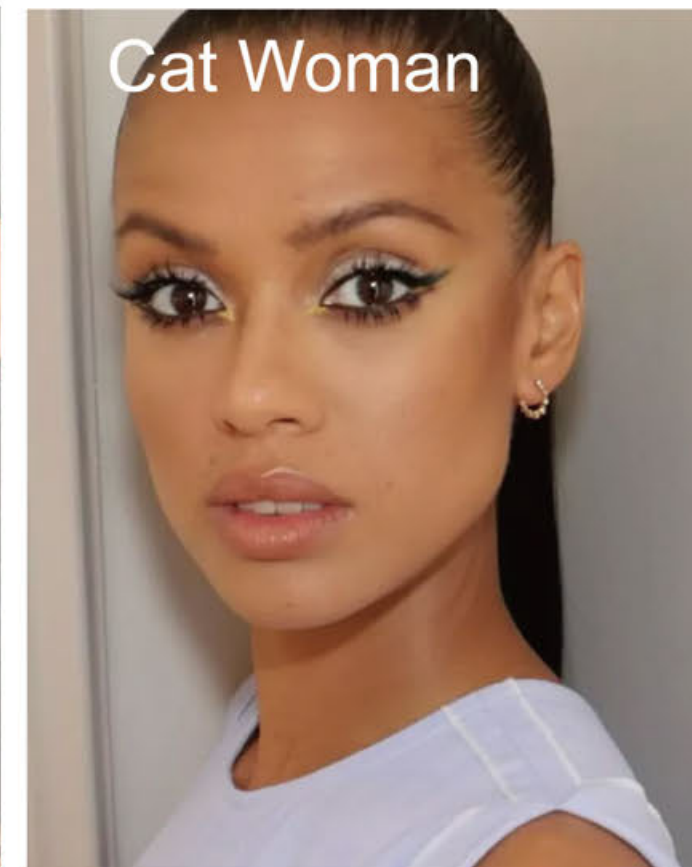
Pop Art



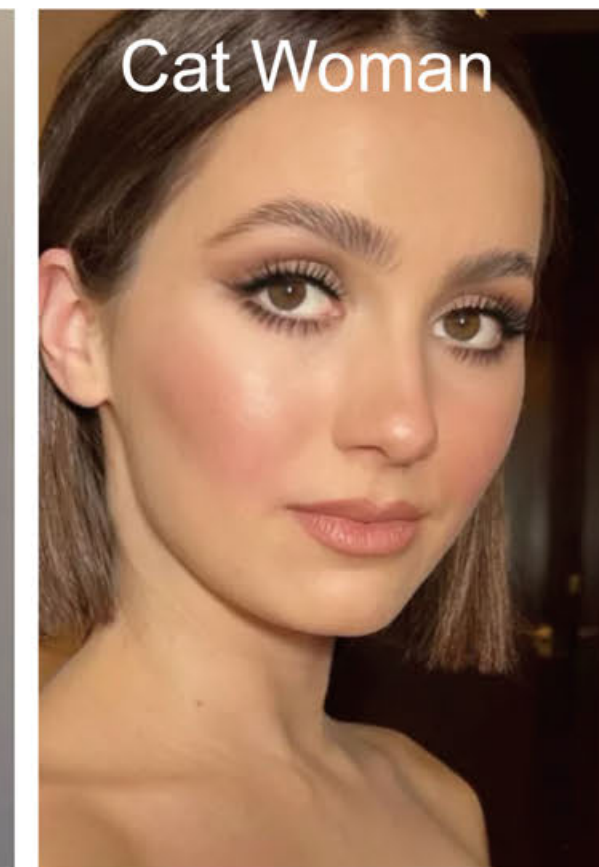
'60s Glamour



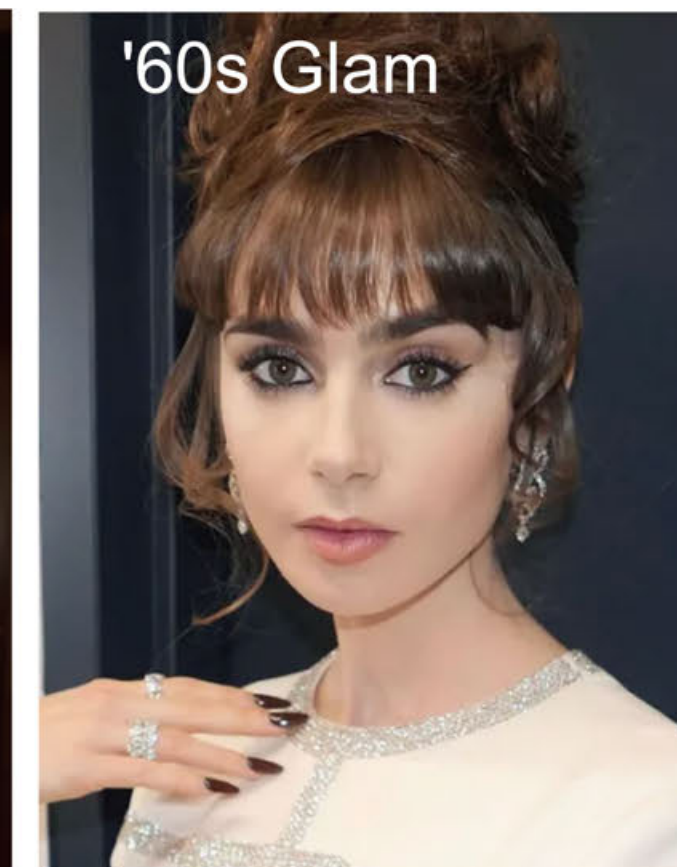
Hollywood Star



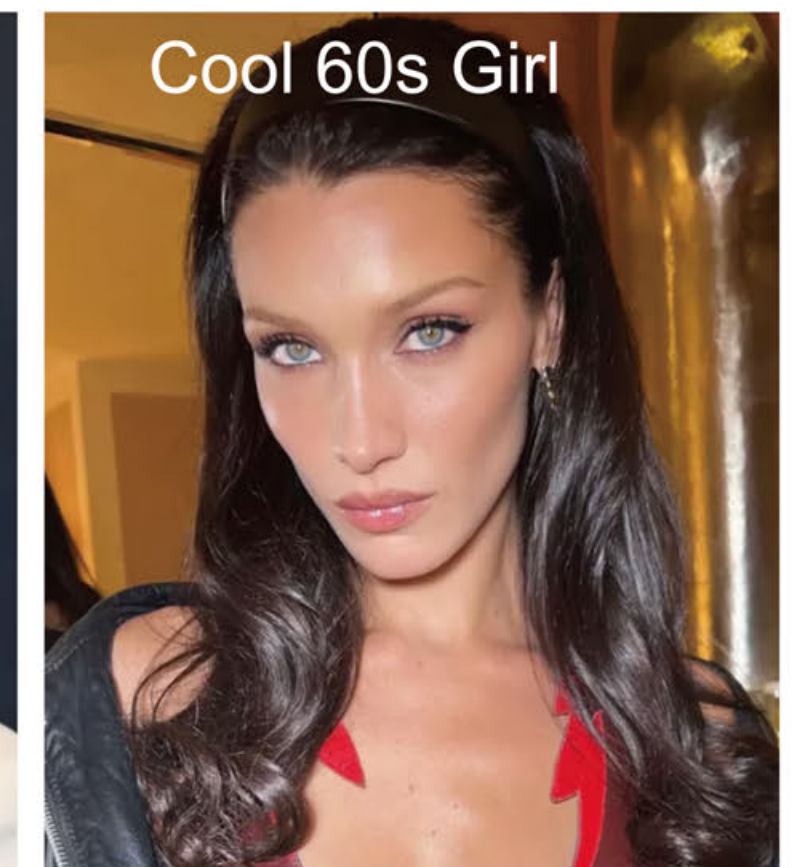
Cat Woman



Cat Woman



'60s Glam

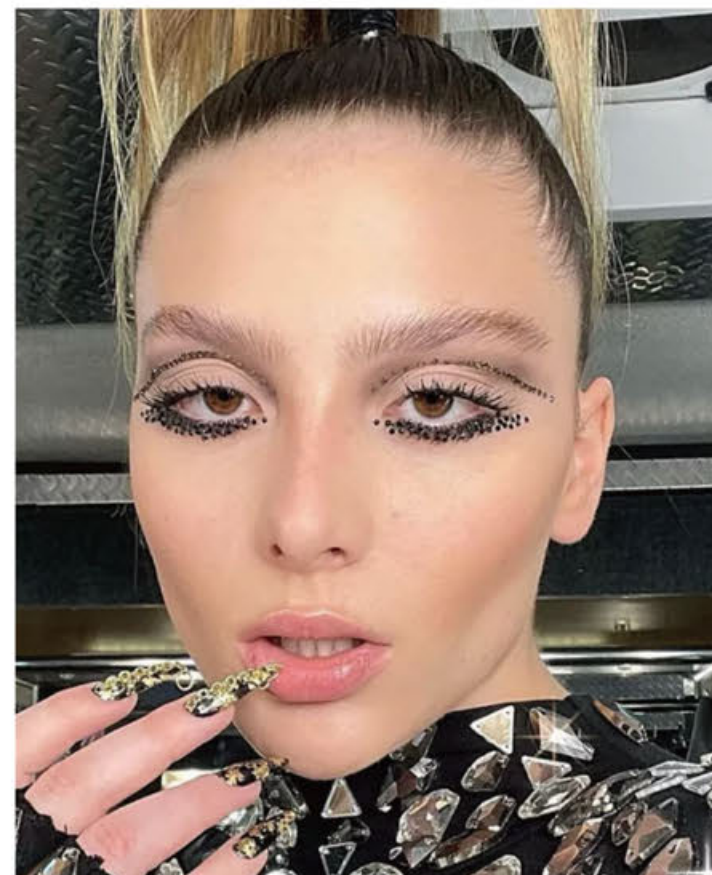
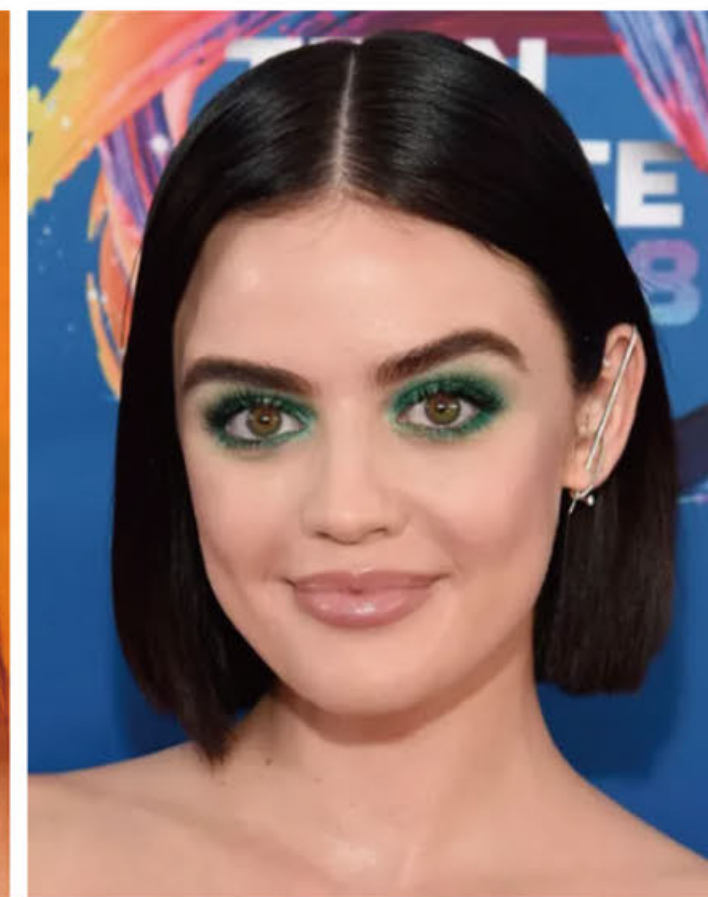


Cool 60s Girl

<https://www.byrdie.com/1960s-makeup-looks-8413877>

The Best Eyeshadow for Hazel Eyes: 17 Looks You'll Want to Try ASAP

BYRDIE



<https://www.byrdie.com/best-eyeshadow-for-hazel-eyes-8608923>